

For Research Use Only

# NDUFB8 Monoclonal antibody, PBS Only (Capture)

Catalog Number: 67690-1-PBS

Featured Product



## Basic Information

Catalog Number:

67690-1-PBS

Size:

100ug, Concentration: 1mg/ml by Nanodrop;

Source:

Mouse

Isotype:

IgG1

Immunogen Catalog Number:

AG6569

GenBank Accession Number:

BC000466

GeneID (NCBI):

4714

UNIPROT ID:

O95169

Full Name:

NADH dehydrogenase (ubiquinone) 1 beta subcomplex, 8, 19kDa

Calculated MW:

22 kDa

Observed MW:

18-22 kDa

Purification Method:

Protein A purification

CloneNo.:

3B12C6

## Applications

Tested Applications:

WB, IHC, Cytometric bead array, Indirect ELISA

Species Specificity:

human, mouse, rat, pig, rabbit

## Product Information

67690-1-PBS targets NDUFB8 as part of a matched antibody pair:

MP50307-1: 67690-1-PBS capture and 67690-2-PBS detection (validated in Cytometric bead array)

MP50307-2: 67690-1-PBS capture and 67690-3-PBS detection (validated in Cytometric bead array)

Unconjugated mouse monoclonal antibody pair in PBS only (BSA and azide free) storage buffer at a concentration of 1 mg/mL, ready for conjugation.

This conjugation ready format makes antibodies ideal for use in many applications including: ELISAs, multiplex assays requiring matched pairs, mass cytometry, and multiplex imaging applications. Antibody use should be optimized by the end user for each application and assay.

## Storage

Storage:

Store at -80°C.

Storage Buffer:

PBS Only

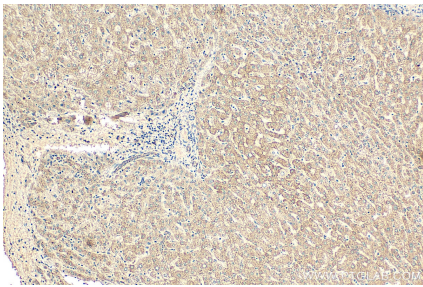
For technical support and original validation data for this product please contact:

T: 1 (888) 4PTGLAB (1-888-478-4522) (toll free in USA), or 1(312) 455-8498 (outside USA)

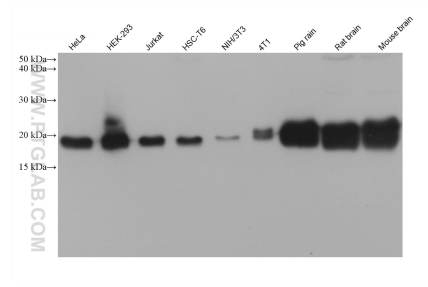
E: [proteintech@ptglab.com](mailto:proteintech@ptglab.com)  
W: [ptglab.com](http://ptglab.com)

This product is exclusively available under Proteintech Group brand and is not available to purchase from any other manufacturer.

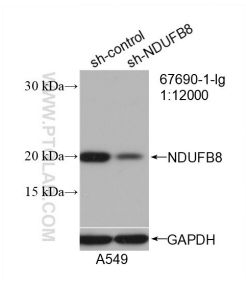
Selected Validation Data



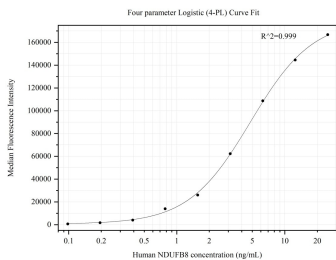
Immunohistochemical analysis of paraffin-embedded human liver tissue slide using 67690-1-Ig (NDUFB8 antibody) at dilution of 1:1000 (under 10x lens). Heat mediated antigen retrieval with Tris-EDTA buffer (pH 9.0). This data was developed using the same antibody clone with 67690-1-PBS in a different storage buffer formulation.



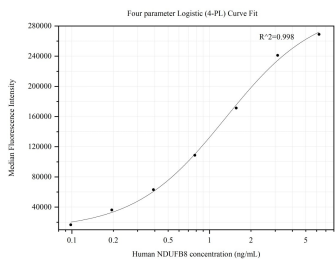
Various lysates were subjected to SDS PAGE followed by western blot with 67690-1-Ig (NDUFB8 antibody) at dilution of 1:20000 incubated at room temperature for 1.5 hours. This data was developed using the same antibody clone with 67690-1-PBS in a different storage buffer formulation.



WB result of NDUFB8 antibody (67690-1-Ig; 1:12000; incubated at room temperature for 1.5 hours) with sh-Control and sh-NDUFB8 transfected A549 cells. This data was developed using the same antibody clone with 67690-1-PBS in a different storage buffer formulation.



Cytometric bead array standard curve of MP50307-2, NDUFB8 Monoclonal Matched Antibody Pair, PBS Only. Capture antibody: 67690-1-PBS. Detection antibody: 67690-3-PBS. Standard:Ag6569. Range: 0.098-25 ng/mL



Cytometric bead array standard curve of MP50307-1, NDUFB8 Monoclonal Matched Antibody Pair, PBS Only. Capture antibody: 67690-1-PBS. Detection antibody: 67690-2-PBS. Standard:Ag6569. Range: 0.098-6.25 ng/mL