

For Research Use Only

ASL Monoclonal antibody

Catalog Number: 67692-1-Ig **1 Publications**



Basic Information

Catalog Number: 67692-1-Ig	GenBank Accession Number: BC008195	Purification Method: Protein A purification
Size: 150ul , Concentration: 1000 ug/ml by Nanodrop and 500 ug/ml by Bradford method using BSA as the standard;	GeneID (NCBI): 435	CloneNo.: 1G9H3
Source: Mouse	UNIPROT ID: P04424	Recommended Dilutions: WB 1:5000-1:50000
Isotype: IgG2b	Full Name: argininosuccinate lyase	
Immunogen Catalog Number: AG30517	Calculated MW: 55 kDa	
	Observed MW: 50 kDa	

Applications

Tested Applications: WB, ELISA	Positive Controls: WB : pig kidney tissue, LNCaP cells, K-562 cells, rat kidney tissue, mouse kidney tissue, pig liver tissue, rat liver tissue, mouse liver tissue
Cited Applications: WB	
Species Specificity: Human, mouse, rat, pig	
Cited Species: mouse	

Background Information

Argininosuccinate lyase (ASL), one of the significant UC enzymes, catalyzes argininosuccinate cleavage to generate arginine and fumarate. Arginine is then catalyzed by arginase to ornithine and polyamines, which are found to promote cancer cell proliferation and growth. Importantly, ASL ectopic expression is closely associated with poor prognosis of colorectal cancer, hepatocellular. ASL is a member of the aspartase/fumarase superfamily. Enzymes of this superfamily share similar tetrameric structure and active site, though the sequence identities between different members are quite low (less than 20%). Members of this superfamily have been recognised as drug targets for microbial infections. ASL is a 464-amino-acid enzyme with a molecular mass of 49.7 kDa. (PMID: 22386318 PMID: 31018905)

Notable Publications

Author	Pubmed ID	Journal	Application
Nneka Southwell	37222423	EMBO Mol Med	WB

Storage

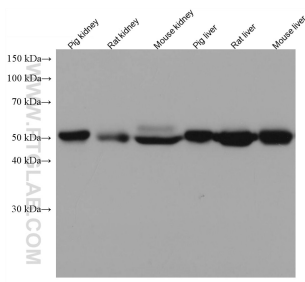
Storage:
Store at -20°C.
Storage Buffer:
PBS with 0.02% sodium azide and 50% glycerol pH 7.3.
Aliquoting is unnecessary for -20°C storage

*** 20ul sizes contain 0.1% BSA

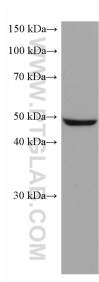
For technical support and original validation data for this product please contact:
T: 1 (888) 4PTGLAB (1-888-478-4522) (toll free in USA), or 1(312) 455-8498 (outside USA)
E: proteintech@ptglab.com
W: ptglab.com

This product is exclusively available under Proteintech Group brand and is not available to purchase from any other manufacturer.

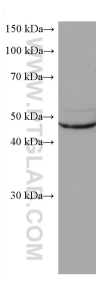
Selected Validation Data



Various lysates were subjected to SDS PAGE followed by western blot with 67692-1-Ig (ASL antibody) at dilution of 1:20000 incubated at room temperature for 1.5 hours.



LNCaP cells were subjected to SDS PAGE followed by western blot with 67692-1-Ig (ASL antibody) at dilution of 1:20000 incubated at room temperature for 1.5 hours.



K-562 cells were subjected to SDS PAGE followed by western blot with 67692-1-Ig (ASL antibody) at dilution of 1:20000 incubated at room temperature for 1.5 hours.