

## ASL Monoclonal antibody, PBS Only

Catalog Number: 67692-1-PBS

## Basic Information

<b>Catalog Number:</b> 67692-1-PBS	<b>GenBank Accession Number:</b> BC008195	<b>Purification Method:</b> Protein A purification
<b>Size:</b> 100ug , Concentration: 1 mg/ml by Nanodrop;	<b>GeneID (NCBI):</b> 435	<b>CloneNo.:</b> 1G9H3
<b>Source:</b> Mouse	<b>UNIPROT ID:</b> P04424	
<b>Isotype:</b> IgG2b	<b>Full Name:</b> argininosuccinate lyase	
<b>Immunogen Catalog Number:</b> AG30517	<b>Calculated MW:</b> 55 kDa	
	<b>Observed MW:</b> 50 kDa	

## Applications

**Tested Applications:**  
WB, Indirect ELISA

**Species Specificity:**  
Human, mouse, rat, pig

## Background Information

Argininosuccinate lyase (ASL), one of the significant UC enzymes, catalyzes argininosuccinate cleavage to generate arginine and fumarate. Arginine is then catalyzed by arginase to ornithine and polyamines, which are found to promote cancer cell proliferation and growth. Importantly, ASL ectopic expression is closely associated with poor prognosis of colorectal cancer, hepatocellular. ASL is a member of the aspartase/fumarase superfamily. Enzymes of this superfamily share similar tetrameric structure and active site, though the sequence identities between different members are quite low (less than 20%). Members of this superfamily have been recognised as drug targets for microbial infections. ASL is a 464-amino-acid enzyme with a molecular mass of 49.7 kDa. (PMID: 22386318 PMID: 31018905)

## Storage

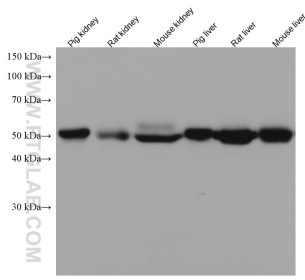
**Storage:**  
Store at -80°C.

**Storage Buffer:**  
PBS Only

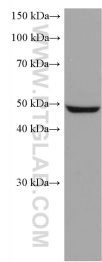
For technical support and original validation data for this product please contact:  
T: 1 (888) 4PTGLAB (1-888-478-4522) (toll free in USA), or 1(312) 455-8498 (outside USA)  
E: [proteintech@ptglab.com](mailto:proteintech@ptglab.com)  
W: [ptglab.com](http://ptglab.com)

This product is exclusively available under Proteintech Group brand and is not available to purchase from any other manufacturer.

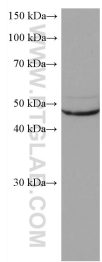
## Selected Validation Data



Various lysates were subjected to SDS PAGE followed by western blot with 67692-1-Ig (ASL antibody) at dilution of 1:20000 incubated at room temperature for 1.5 hours. This data was developed using the same antibody clone with 67692-1-PBS in a different storage buffer formulation.



LNCaP cells were subjected to SDS PAGE followed by western blot with 67692-1-Ig (ASL antibody) at dilution of 1:20000 incubated at room temperature for 1.5 hours. This data was developed using the same antibody clone with 67692-1-PBS in a different storage buffer formulation.



K-562 cells were subjected to SDS PAGE followed by western blot with 67692-1-Ig (ASL antibody) at dilution of 1:20000 incubated at room temperature for 1.5 hours. This data was developed using the same antibody clone with 67692-1-PBS in a different storage buffer formulation.