

For Research Use Only

# SNF8 Monoclonal antibody

Catalog Number: 67696-1-Ig **2 Publications**



## Basic Information

|  |  |   |
|--|--|---|
| <b>Catalog Number:</b><br>67696-1-Ig   | <b>GenBank Accession Number:</b><br>BC008976                                 | <b>Purification Method:</b><br>Protein G purification                                   |
| <b>Size:</b><br>150ul , Concentration: 500 ug/ml by Bradford method using BSA as the standard; | <b>GeneID (NCBI):</b><br>11267   | <b>CloneNo.:</b><br>2C10F2  |
| <b>Source:</b><br>Mouse  | <b>UNIPROT ID:</b><br>Q96H20   | <b>Recommended Dilutions:</b><br>WB 1:500-1:3000<br>IHC 1:50-1:500<br>IF/ICC 1:50-1:500 |
| <b>Isotype:</b><br>IgG1  | <b>Full Name:</b><br>SNF8, ESCRT-II complex subunit, homolog (S. cerevisiae) |   |
| <b>Immunogen Catalog Number:</b><br>AG30384  | <b>Calculated MW:</b><br>258 aa, 29 kDa                                      |   |
|  | <b>Observed MW:</b><br>29 kDa  |   |

## Applications

|  |   |
|--|---|
| <b>Tested Applications:</b><br>WB, IHC, IF/ICC, ELISA  | <b>Positive Controls:</b><br>WB : HeLa cells, K-562 cells |
| <b>Cited Applications:</b><br>WB, IF   | <b>IHC :</b> human breast cancer tissue,                  |
| <b>Species Specificity:</b><br>human   | <b>IF/ICC :</b> HeLa cells,                               |
| <b>Cited Species:</b><br>human, mouse  |   |
| <b>Note-IHC: suggested antigen retrieval with TE buffer pH 9.0; (*) Alternatively, antigen retrieval may be performed with citrate buffer pH 6.0</b> |   |

## Notable Publications

| Author         | Pubmed ID | Journal          | Application |
|----------------|-----------|------------------|-------------|
| Jixuan Xu      | 40015537  | J Ethnopharmacol | WB          |
| Takashi Nozawa | 37802980  | Nat Commun       | IF          |

## Storage

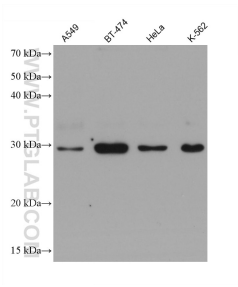
**Storage:**  
Store at -20°C. Stable for one year after shipment.  
**Storage Buffer:**  
PBS with 0.02% sodium azide and 50% glycerol, pH7.3  
Aliquoting is unnecessary for -20°C storage

\*\*\* 20ul sizes contain 0.1% BSA

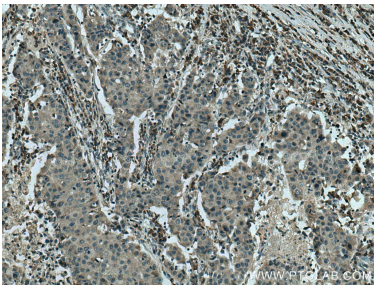
For technical support and original validation data for this product please contact:  
T: 1 (888) 4PTGLAB (1-888-478-4522) (toll free in USA), or 1(312) 455-8498 (outside USA)  
E: proteintech@ptglab.com  
W: ptglab.com

This product is exclusively available under Proteintech Group brand and is not available to purchase from any other manufacturer.

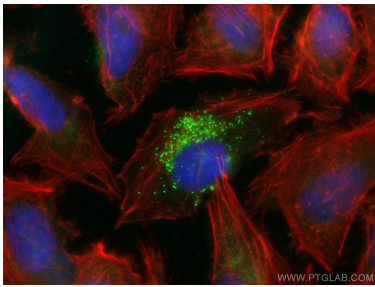
Selected Validation Data



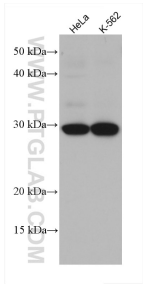
Various lysates were subjected to SDS PAGE followed by western blot with 67696-1-Ig (SNF8 antibody) at dilution of 1:5000 incubated at room temperature for 1.5 hours.



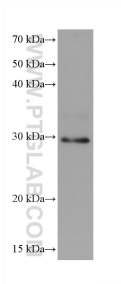
Immunohistochemical analysis of paraffin-embedded human breast cancer tissue slide using 67696-1-Ig (SNF8 antibody) at dilution of 1:200 (under 10x lens). Heat mediated antigen retrieval with Tris-EDTA buffer (pH 9.0).



Immunofluorescent analysis of (4% PFA) fixed HeLa cells using SNF8 antibody (67696-1-Ig, Clone: 2C10F2 ) at dilution of 1:200 and CoraLite®488-Conjugated AffiniPure Goat Anti-Mouse IgG(H+L), CL594-Phalloidin (red).



Various lysates were subjected to SDS PAGE followed by western blot with 67696-1-Ig (SNF8 antibody) at dilution of 1:1500 incubated at room temperature for 1.5 hours.



U2OS cells were subjected to SDS PAGE followed by western blot with 67696-1-Ig (SNF8 antibody) at dilution of 1:5000 incubated at room temperature for 1.5 hours.