

For Research Use Only

# SNF8 Monoclonal antibody, PBS Only

Catalog Number: 67696-1-PBS



## Basic Information

**Catalog Number:**

67696-1-PBS

**Size:**

100ug , Concentration: 1mg/ml by Nanodrop;

**Source:**

Mouse

**Isotype:**

IgG1

**Immunogen Catalog Number:**

AG30384

**GenBank Accession Number:**

BC008976

**GeneID (NCBI):**

11267

**UNIPROT ID:**

Q96H20

**Full Name:**

SNF8, ESCRT-II complex subunit, homolog (S. cerevisiae)

**Calculated MW:**

258 aa, 29 kDa

**Observed MW:**

29 kDa

**Purification Method:**

Protein G purification

**CloneNo.:**

2C10F2

## Applications

**Tested Applications:**

WB, IHC, IF/ICC, Indirect ELISA

**Species Specificity:**

human

## Storage

**Storage:**

Store at -80°C.

**Storage Buffer:**

PBS Only

For technical support and original validation data for this product please contact:

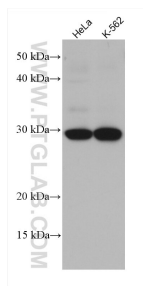
T: 1 (888) 4PTGLAB (1-888-478-4522) (toll free in USA), or 1(312) 455-8498 (outside USA)

E: [proteintech@ptglab.com](mailto:proteintech@ptglab.com)

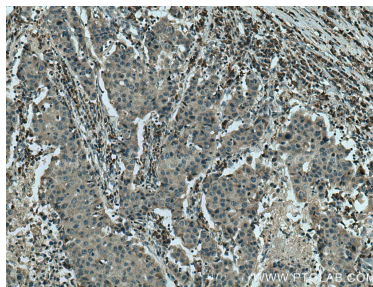
W: [ptglab.com](http://ptglab.com)

This product is exclusively available under Proteintech Group brand and is not available to purchase from any other manufacturer.

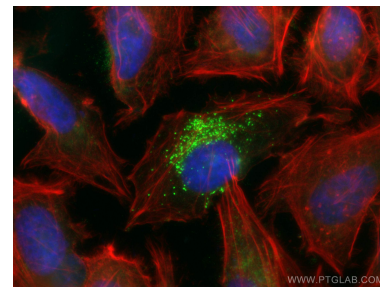
## Selected Validation Data



Various lysates were subjected to SDS PAGE followed by western blot with 67696-1-Ig (SNF8 antibody) at dilution of 1:1500 incubated at room temperature for 1.5 hours. This data was developed using the same antibody clone with 67696-1-PBS in a different storage buffer formulation.



Immunohistochemical analysis of paraffin-embedded human breast cancer tissue slide using 67696-1-Ig (SNF8 antibody) at dilution of 1:200 (under 10x lens). Heat mediated antigen retrieval with Tris-EDTA buffer (pH 9.0). This data was developed using the same antibody clone with 67696-1-PBS in a different storage buffer formulation.



Immunofluorescent analysis of (4% PFA) fixed HeLa cells using SNF8 antibody (67696-1-Ig, Clone: 2C10F2 ) at dilution of 1:200 and CoraLite®488-Conjugated AffiniPure Goat Anti-Mouse IgG(H+L), CL594-Phalloidin (red). This data was developed using the same antibody clone with 67696-1-PBS in a different storage buffer formulation.