

For Research Use Only

PPT1 Monoclonal antibody, PBS Only

Catalog Number: 67699-1-PBS

Featured Product



Basic Information

Catalog Number:

67699-1-PBS

Size:

100ug, Concentration: 1mg/ml by Nanodrop;

Source:

Mouse

Isotype:

IgG2a

Immunogen Catalog Number:

AG30550

GenBank Accession Number:

BC008426

GeneID (NCBI):

5538

UNIPROT ID:

P50897

Full Name:

palmitoyl-protein thioesterase 1

Calculated MW:

34 kDa

Observed MW:

32-34 kDa

Purification Method:

Protein A purification

CloneNo.:

1A1A3

Applications

Tested Applications:

WB, IF-P, Indirect ELISA

Species Specificity:

human, pig, rabbit

Background Information

The defective gene behind the INCL (infantile neuronal ceroid lipofuscinoses) disease, CLN1, encodes for palmitoyl protein thioesterase 1 (PPT1). It consists of 306 amino acids, including a signal sequence of 26 amino acids and three N-linked glycosylation sites. This protein exists with a molecular mass of 32 kDa, 34 kDa, 36 kDa, and 38 kDa. The enzyme is transported into lysosomes of non-neuronal cells by the mannose 6-phosphate receptor (M6PR) mediated pathway and a significant amount of native PPT1 resides in a complex rather than in a monomeric form (PMID:17565660).

Storage

Storage:

Store at -80°C.

Storage Buffer:

PBS Only

For technical support and original validation data for this product please contact:

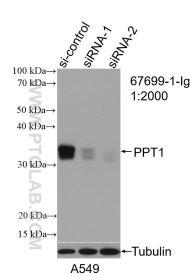
T: 1 (888) 4PTGLAB (1-888-478-4522) (toll free in USA), or 1(312) 455-8498 (outside USA)

E: proteintech@ptglab.com

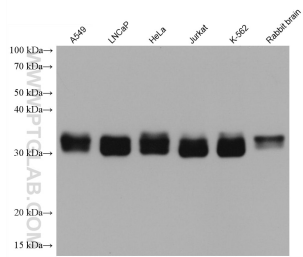
W: ptglab.com

This product is exclusively available under Proteintech Group brand and is not available to purchase from any other manufacturer.

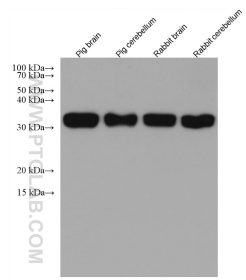
Selected Validation Data



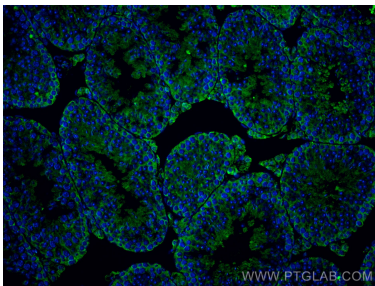
WB result of PPT1 antibody (67699-1-Ig: 1:2000; incubated at room temperature for 1.5 hours) with sh-Control and sh-PPT1 transfected A549 cells. This data was developed using the same antibody clone with 67699-1-PBS in a different storage buffer formulation.



Various lysates were subjected to SDS PAGE followed by western blot with 67699-1-Ig (PPT1 antibody) at dilution of 1:5000 incubated at room temperature for 1.5 hours. This data was developed using the same antibody clone with 67699-1-PBS in a different storage buffer formulation.



Various lysates were subjected to SDS PAGE followed by western blot with 67699-1-Ig (PPT1 antibody) at dilution of 1:5000 incubated at room temperature for 1.5 hours. This data was developed using the same antibody clone with 67699-1-PBS in a different storage buffer formulation.



Immunofluorescent analysis of (4% PFA) fixed paraffin-embedded mouse testis tissue using PPT1 antibody (67699-1-Ig, Clone: 1A1A3) at dilution of 1:400 and CoraLite®488-Conjugated AffiniPure Goat Anti-Mouse IgG(H+L) (SA00013-1). Heat mediated antigen retrieval with Tris-EDTA buffer (pH 9.0). This data was developed using the same antibody clone with 67699-1-PBS in a different storage buffer formulation.