

For Research Use Only

# SLC6A12 Monoclonal antibody

Catalog Number: 67700-1-Ig **1 Publications**



## Basic Information

<b>Catalog Number:</b> 67700-1-Ig	<b>GenBank Accession Number:</b> BC126215	<b>Purification Method:</b> Protein A purification
<b>Size:</b> 150ul , Concentration: 1700 µg/ml by Nanodrop and 1000 µg/ml by Bradford method using BSA as the standard;	<b>GeneID (NCBI):</b> 6539	<b>CloneNo.:</b> 2C1G4
<b>Source:</b> Mouse	<b>Full Name:</b> solute carrier family 6 (neurotransmitter transporter, betaine/GABA), member 12	<b>Recommended Dilutions:</b> WB 1:1000-1:4000 IF 1:200-1:800
<b>Isotype:</b> IgG2a	<b>Calculated MW:</b> 614 aa, 69 kDa	
<b>Immunogen Catalog Number:</b> AG18962	<b>Observed MW:</b> 70 kDa	

## Applications

<b>Tested Applications:</b> IF, WB, ELISA	<b>Positive Controls:</b>
<b>Cited Applications:</b> WB	<b>WB :</b> L02 cells, rat liver tissue, HSC-T6 cells, HuH-7 cells, HepG2 cells, mouse hepatocytes
<b>Species Specificity:</b> Human, Mouse, Rat	<b>IF :</b> Caco-2 cells,
<b>Cited Species:</b> canine	

## Background Information

### Notable Publications

Author	Pubmed ID	Journal	Application
Eva S Schweikhard	24829506	Am J Physiol Renal Physiol	WB

## Storage

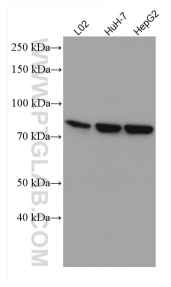
**Storage:**  
Store at -20°C. Stable for one year after shipment.  
**Storage Buffer:**  
PBS with 0.02% sodium azide and 50% glycerol pH 7.3.  
Aliquoting is unnecessary for -20°C storage

\*\*\* 20ul sizes contain 0.1% BSA

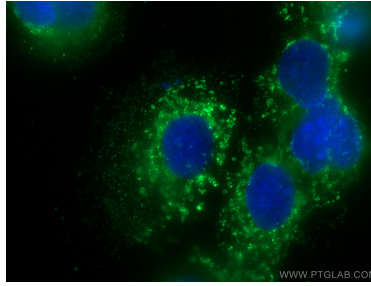
For technical support and original validation data for this product please contact:  
T: 1 (888) 4PTGLAB (1-888-478-4522) (toll free in USA), or 1(312) 455-8498 (outside USA)  
E: proteintech@ptglab.com  
W: ptglab.com

This product is exclusively available under Proteintech Group brand and is not available to purchase from any other manufacturer.

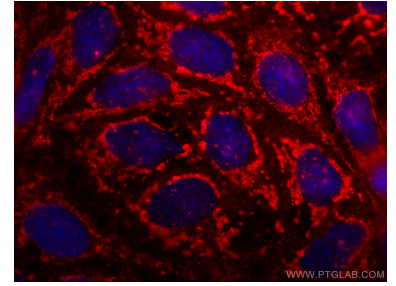
## Selected Validation Data



Various lysates were subjected to SDS PAGE followed by western blot with 67700-1-Ig (SLC6A12 antibody) at dilution of 1:2000 incubated at room temperature for 1.5 hours.



Immunofluorescent analysis of (-20°C Methanol) fixed Caco-2 cells using SLC6A12 antibody (67700-1-Ig, Clone: 2C1G4 ) at dilution of 1:400 and CoraLite®488-Conjugated AffiniPure Goat Anti-Mouse IgG(H+L).



Immunofluorescent analysis of (-20°C Ethanol) fixed Caco-2 cells using SLC6A12 antibody (67700-1-Ig, Clone: 2C1G4 ) at dilution of 1:800 and CoraLite®594-Conjugated AffiniPure Goat Anti-Mouse IgG(H+L).