

For Research Use Only

# DLD Monoclonal antibody

Catalog Number: 67702-1-Ig

Featured Product

1 Publications



## Basic Information

Catalog Number:

67702-1-Ig

Size:

150ul, Concentration: 1100 ug/ml by Nanodrop and 500 ug/ml by Bradford method using BSA as the standard;

Source:

Mouse

Isotype:

IgG1

Immunogen Catalog Number:

AG9680

GenBank Accession Number:

BC018696

GeneID (NCBI):

1738

UNIPROT ID:

P09622

Full Name:

dihydrolipoamide dehydrogenase

Calculated MW:

509 aa, 54 kDa

Observed MW:

54 kDa

Purification Method:

Protein G purification

CloneNo.:

2E7G5

Recommended Dilutions:

WB 1:2000-1:10000

IHC 1:250-1:1000

## Applications

Tested Applications:

WB, IHC, ELISA

Cited Applications:

IHC

Species Specificity:

Human, mouse, rat

Cited Species:

human

**Note-IHC: suggested antigen retrieval with TE buffer pH 9.0; (\*) Alternatively, antigen retrieval may be performed with citrate buffer pH 6.0**

Positive Controls:

WB : HuH-7 cells, NIH/3T3 cells, HSC-T6 cells, HeLa cells, L02 cells, HepG2 cells, Jurkat cells

IHC : human liver cancer tissue,

## Background Information

DLD(Dihydrolipoamide dehydrogenase, mitochondrial) is also named as GCSL, LAD, PHE3 and belongs to the class-I pyridine nucleotide-disulfide oxidoreductase family. It catalyzes the oxidation of dihydrolipoamide, hE3 uses two molecules : non-covalently bound FAD and a transiently bound substrate, NAD<sup>+</sup>. DLD is involved in the hyperactivation of spermatazoa during capacitation and in the spermatazoal acrosome reaction.

## Notable Publications

| Author  | Pubmed ID | Journal       | Application |
|---------|-----------|---------------|-------------|
| Kai Yao | 37600770  | Front Immunol | IHC         |

## Storage

Storage:

Store at -20°C.

Storage Buffer:

PBS with 0.02% sodium azide and 50% glycerol pH 7.3.

Aliquoting is unnecessary for -20°C storage

\*\*\* 20ul sizes contain 0.1% BSA

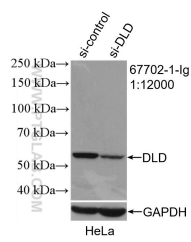
For technical support and original validation data for this product please contact:

T: 1 (888) 4PTGLAB (1-888-478-4522) (toll free in USA), or 1(312) 455-8498 (outside USA)

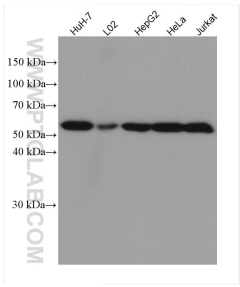
E: [proteintech@ptglab.com](mailto:proteintech@ptglab.com)  
W: [ptglab.com](http://ptglab.com)

This product is exclusively available under Proteintech Group brand and is not available to purchase from any other manufacturer.

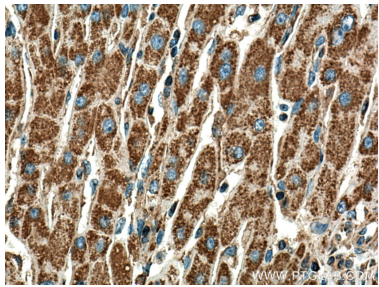
Selected Validation Data



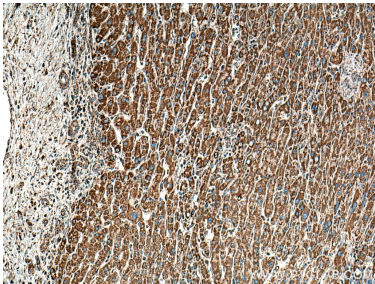
WB result of DLD antibody (67702-1-Ig; 1:12000; incubated at room temperature for 1.5 hours) with sh-Control and sh-DLD transfected HeLa cells.



Various lysates were subjected to SDS PAGE followed by western blot with 67702-1-Ig (DLD antibody) at dilution of 1:5000 incubated at room temperature for 1.5 hours.



Immunohistochemical analysis of paraffin-embedded human liver cancer tissue slide using 67702-1-Ig (DLD antibody) at dilution of 1:500 (under 40x lens). Heat mediated antigen retrieval with Tris-EDTA buffer (pH 9.0).



Immunohistochemical analysis of paraffin-embedded human liver cancer tissue slide using 67702-1-Ig (DLD antibody) at dilution of 1:500 (under 10x lens). Heat mediated antigen retrieval with Tris-EDTA buffer (pH 9.0).