

For Research Use Only

DLD Monoclonal antibody

Catalog Number: 67702-1-Ig

Featured Product

1 Publications



Basic Information

Catalog Number:

67702-1-Ig

Size:

150ul, Concentration: 1100 ug/ml by Nanodrop and 500 ug/ml by Bradford method using BSA as the standard;

Source:

Mouse

Isotype:

IgG1

Immunogen Catalog Number:

AG9680

GenBank Accession Number:

BC018696

GeneID (NCBI):

1738

UNIPROT ID:

P09622

Full Name:

dihydrolipoamide dehydrogenase

Calculated MW:

509 aa, 54 kDa

Observed MW:

54 kDa

Purification Method:

Protein G purification

CloneNo.:

2E7G5

Recommended Dilutions:

WB 1:2000-1:10000

IHC 1:250-1:1000

Applications

Tested Applications:

WB, IHC, ELISA

Cited Applications:

IHC

Species Specificity:

human, mouse, rat

Cited Species:

human

Note-IHC: suggested antigen retrieval with TE buffer pH 9.0; (*) Alternatively, antigen retrieval may be performed with citrate buffer pH 6.0

Positive Controls:

WB : HuH-7 cells, NIH/3T3 cells, HSC-T6 cells, HeLa cells, L02 cells, HepG2 cells, Jurkat cells

IHC : human liver cancer tissue,

Background Information

DLD(Dihydrolipoamide dehydrogenase, mitochondrial) is also named as GCCL, LAD, PHE3 and belongs to the class-I pyridine nucleotide-disulfide oxidoreductase family. It catalyzes the oxidation of dihydrolipoamide, hE3 uses two molecules : non-covalently bound FAD and a transiently bound substrate, NAD+. DLD is involved in the hyperactivation of spermatazoa during capacitation and in the spermatazoal acrosome reaction.

Notable Publications

Author	Pubmed ID	Journal	Application
Kai Yao	37600770	Front Immunol	IHC

Storage

Storage:

Store at -20°C. Stable for one year after shipment.

Storage Buffer:

PBS with 0.02% sodium azide and 50% glycerol, pH7.3

Aliquoting is unnecessary for -20°C storage

*** 20ul sizes contain 0.1% BSA

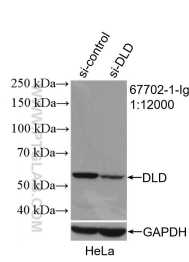
For technical support and original validation data for this product please contact:

T: 1 (888) 4PTGLAB (1-888-478-4522) (toll free in USA), or 1(312) 455-8498 (outside USA)

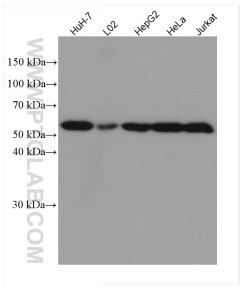
E: proteintech@ptglab.com
W: ptglab.com

This product is exclusively available under Proteintech Group brand and is not available to purchase from any other manufacturer.

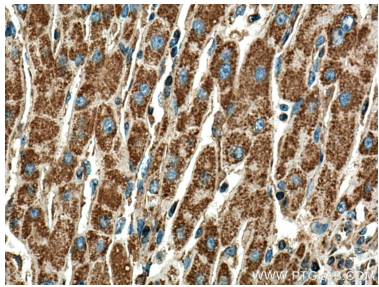
Selected Validation Data



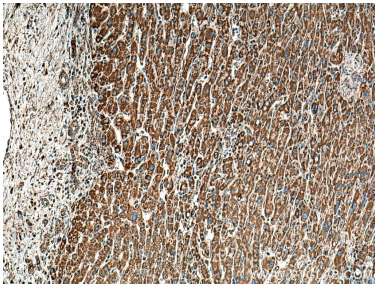
WB result of DLD antibody (67702-1-Ig; 1:12000; incubated at room temperature for 1.5 hours) with sh-Control and sh-DLD transfected HeLa cells.



Various lysates were subjected to SDS PAGE followed by western blot with 67702-1-Ig (DLD antibody) at dilution of 1:5000 incubated at room temperature for 1.5 hours.



Immunohistochemical analysis of paraffin-embedded human liver cancer tissue slide using 67702-1-Ig (DLD antibody) at dilution of 1:500 (under 40x lens). Heat mediated antigen retrieval with Tris-EDTA buffer (pH 9.0).



Immunohistochemical analysis of paraffin-embedded human liver cancer tissue slide using 67702-1-Ig (DLD antibody) at dilution of 1:500 (under 10x lens). Heat mediated antigen retrieval with Tris-EDTA buffer (pH 9.0).