

For Research Use Only

# Laminin beta 1 Monoclonal antibody

Catalog Number: 67705-1-Ig **2 Publications**



## Basic Information

<b>Catalog Number:</b> 67705-1-Ig	<b>GenBank Accession Number:</b> BC113455	<b>Purification Method:</b> Protein G purification
<b>Size:</b> 150ul , Concentration: 1200 ug/ml by Nanodrop and 500 ug/ml by Bradford method using BSA as the standard;	<b>GeneID (NCBI):</b> 3912	<b>CloneNo.:</b> 1B8E9
<b>Source:</b> Mouse	<b>UNIPROT ID:</b> P07942	<b>Recommended Dilutions:</b> WB 1:2000-1:10000
<b>Isotype:</b> IgG1	<b>Full Name:</b> laminin, beta 1	
<b>Immunogen Catalog Number:</b> AG19182	<b>Calculated MW:</b> 1786 aa, 198 kDa	
	<b>Observed MW:</b> 220-240 kDa	

## Applications

<b>Tested Applications:</b> WB, ELISA	<b>Positive Controls:</b> WB : HEK-293 cells, NIH/3T3 cells, human placenta tissue, U2OS cells, A549 cells, HeLa cells, HepG2 cells
<b>Cited Applications:</b> WB	
<b>Species Specificity:</b> Human, Mouse	
<b>Cited Species:</b> human	

## Background Information

Laminins are a family of basement membrane glycoproteins composed of three nonidentical chains, laminin alpha, beta and gamma (formerly A, B1, and B2, respectively) (PMID: 7959779). Laminins contribute to the structure of extracellular matrix and influence the behavior of associated cells, such as adhesion, differentiation, migration, phenotype stability, and resistance to anoikis (PMID: 23057746). Laminin beta 1 (LAMB1) is expressed in most tissues that produce basement membranes, and is one of the 3 chains constituting laminin-1, the first laminin isolated from Engelbreth-Holm-Swarm (EHS) tumor. Laminin beta 1 is also a subunit of laminin-2 (laminin-211 or merosin), laminin-6 (laminin-311 or K-laminin), laminin-8 (laminin-411), laminin-10 (laminin-511) and laminin-12 (laminin-213).

## Notable Publications

Author	Pubmed ID	Journal	Application
Fenfei Liang	38905100	Cell Rep	WB
Wei Xu	38185936	Diabet Med	

## Storage

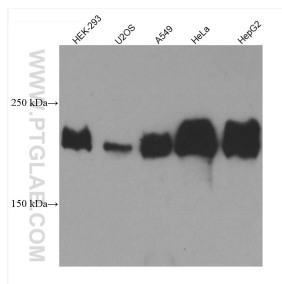
**Storage:**  
Store at -20°C.  
**Storage Buffer:**  
PBS with 0.02% sodium azide and 50% glycerol pH 7.3.  
**Aliquoting is unnecessary for -20°C storage**

\*\*\* 20ul sizes contain 0.1% BSA

For technical support and original validation data for this product please contact:  
T: 1 (888) 4PTGLAB (1-888-478-4522) (toll free in USA), or 1(312) 455-8498 (outside USA)  
E: [proteintech@ptglab.com](mailto:proteintech@ptglab.com)  
W: [ptglab.com](http://ptglab.com)

This product is exclusively available under Proteintech Group brand and is not available to purchase from any other manufacturer.

## Selected Validation Data



Various lysates were subjected to SDS PAGE followed by western blot with 67705-1-Ig (LAMB1 antibody) at dilution of 1:5000 incubated at room temperature for 1.5 hours.