

For Research Use Only

# LAMC1 Monoclonal antibody

Catalog Number: 67706-1-Ig **2 Publications**



## Basic Information

<b>Catalog Number:</b> 67706-1-Ig	<b>GenBank Accession Number:</b> BC015586	<b>Purification Method:</b> Protein G purification
<b>Size:</b> 150ul , Concentration: 500 µg/ml by Bradford method using BSA as the standard;	<b>GeneID (NCBI):</b> 3915	<b>CloneNo.:</b> 1G2G4
<b>Source:</b> Mouse	<b>Full Name:</b> laminin, gamma 1 (formerly LAMB2)	<b>Recommended Dilutions:</b> WB 1:2000-1:10000 IF 1:400-1:1600
<b>Isotype:</b> IgG1	<b>Calculated MW:</b> 178 kDa	
<b>Immunogen Catalog Number:</b> AG14674	<b>Observed MW:</b> 200-220 kDa	

## Applications

<b>Tested Applications:</b> IF, WB, ELISA	<b>Positive Controls:</b>
<b>Cited Applications:</b> WB	<b>WB :</b> HeLa cells, human placenta tissue, LNCaP cells, rat rectum tissue, pig rectum tissue, HepG2 cells, JAR cells
<b>Species Specificity:</b> Human, Pig, Rat	<b>IF :</b> HeLa cells,
<b>Cited Species:</b> human, rat	

## Background Information

### Notable Publications

Author	Pubmed ID	Journal	Application
Dan Liu	34425157	Neuroscience	WB
Yongxin Mo	37551942	Rheumatology (Oxford)	WB

## Storage

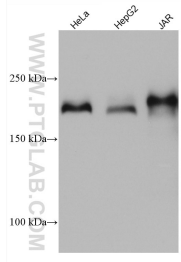
**Storage:**  
Store at -20°C. Stable for one year after shipment.  
**Storage Buffer:**  
PBS with 0.02% sodium azide and 50% glycerol pH 7.3.  
Aliquoting is unnecessary for -20°C storage

\*\*\* 20ul sizes contain 0.1% BSA

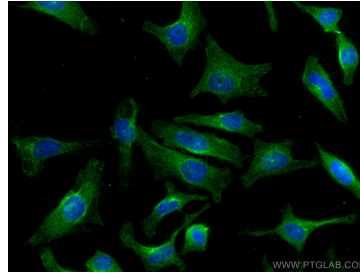
For technical support and original validation data for this product please contact:  
T: 1 (888) 4PTGLAB (1-888-478-4522) (toll free in USA), or 1(312) 455-8498 (outside USA)  
E: proteintech@ptglab.com  
W: ptglab.com

This product is exclusively available under Proteintech Group brand and is not available to purchase from any other manufacturer.

## Selected Validation Data



Various lysates were subjected to SDS PAGE followed by western blot with 67706-1-Ig (LAMC1 antibody) at dilution of 1:5000 incubated at room temperature for 1.5 hours.



Immunofluorescent analysis of (4% PFA) fixed HeLa cells using LAMC1 antibody (67706-1-Ig, Clone: 1G2G4) at dilution of 1:800 and CoraLite® 488-Conjugated AffiniPure Goat Anti-Mouse IgG(H+L).