

For Research Use Only

# ADH6 Monoclonal antibody

Catalog Number: 67709-1-Ig **1 Publications**



## Basic Information

<b>Catalog Number:</b> 67709-1-Ig	<b>GenBank Accession Number:</b> BC039065	<b>Purification Method:</b> Protein A purification
<b>Size:</b> 150ul , Concentration: 500 ug/ml by Nanodrop and 257 ug/ml by Bradford method using BSA as the standard;	<b>GeneID (NCBI):</b> 130	<b>CloneNo.:</b> 1F5C6
<b>Source:</b> Mouse	<b>UNIPROT ID:</b> P28332	<b>Recommended Dilutions:</b> WB 1:20000-1:100000 IF-P 1:200-1:800
<b>Isotype:</b> IgG2b	<b>Full Name:</b> alcohol dehydrogenase 6 (class V)	
<b>Immunogen Catalog Number:</b> AG28845	<b>Calculated MW:</b> 368 aa, 39 kDa	
	<b>Observed MW:</b> 39 kDa	

## Applications

<b>Tested Applications:</b> WB, IF-P, ELISA	<b>Positive Controls:</b>
<b>Cited Applications:</b> WB	<b>WB :</b> mouse liver tissue, rat kidney tissue, mouse kidney tissue, rabbit kidney tissue
<b>Species Specificity:</b> Human, mouse, rat, rabbit	<b>IF-P :</b> mouse kidney tissue,
<b>Cited Species:</b> mouse	

## Notable Publications

Author	Pubmed ID	Journal	Application
Meng-Yuan Liu	39468986	Mol Nutr Food Res	WB

## Storage

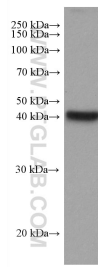
**Storage:**  
Store at -20°C. Stable for one year after shipment.  
**Storage Buffer:**  
PBS with 0.1% sodium azide and 50% glycerol pH 7.3.  
Aliquoting is unnecessary for -20°C storage

\*\*\* 20ul sizes contain 0.1% BSA

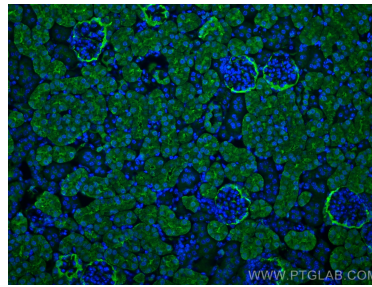
For technical support and original validation data for this product please contact:  
T: 1 (888) 4PTGLAB (1-888-478-4522) (toll free in USA), or 1(312) 455-8498 (outside USA)  
E: [proteintech@ptglab.com](mailto:proteintech@ptglab.com)  
W: [ptglab.com](http://ptglab.com)

This product is exclusively available under Proteintech Group brand and is not available to purchase from any other manufacturer.

## Selected Validation Data



mouse liver tissue were subjected to SDS PAGE followed by western blot with 67709-1-Ig (ADH6 antibody) at dilution of 1:100000 incubated at room temperature for 1.5 hours.



Immunofluorescent analysis of (4% PFA) fixed mouse kidney tissue using ADH6 antibody (67709-1-Ig, Clone: 1F5C6) at dilution of 1:400 and CoraLite®488-Conjugated Goat Anti-Mouse IgG(H+L).