

For Research Use Only

# EPRS Monoclonal antibody, PBS Only

Catalog Number: 67712-1-PBS



## Basic Information

<b>Catalog Number:</b> 67712-1-PBS	<b>GenBank Accession Number:</b> BC126275	<b>Purification Method:</b> Protein A purification
<b>Size:</b> 100ug , Concentration: 1mg/ml by Nanodrop;	<b>GeneID (NCBI):</b> 2058	<b>CloneNo.:</b> 1B7G2
<b>Source:</b> Mouse	<b>UNIPROT ID:</b> P07814	
<b>Isotype:</b> IgG2a	<b>Full Name:</b> glutamyl-prolyl-tRNA synthetase	
<b>Immunogen Catalog Number:</b> AG19184	<b>Calculated MW:</b> 1512 aa, 171 kDa	
	<b>Observed MW:</b> 171 kDa	

## Applications

**Tested Applications:**  
WB, IP, IF, IHC, Indirect ELISA

**Species Specificity:**  
Human, rat, mouse

## Background Information

Human EPRS is a 172 kDa, 1512 amino acid polypeptide consisting of three major domains. The N and C termini contain ERS and PRS catalytic domains, respectively, joined by a 300 amino acid linker containing three tandem WHEP-TRS (referred to as WHEP) domains. EPRS is a bifunctional aminoacyl-tRNA synthetase that catalyzes the aminoacylation of glutamic acid and proline tRNA species. EPRS has a special role in GAIT-mediated translational control, as it is solely responsible for recognition and interaction with GAIT elements in target mRNAs. (PMID: 29576217, PMID: 22386318, PMID: 19647514)

## Storage

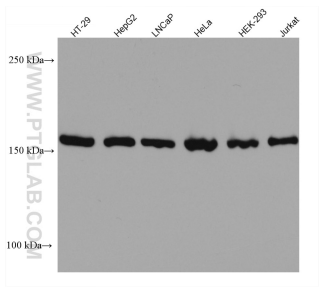
**Storage:**  
Store at -80°C.

**Storage Buffer:**  
PBS Only

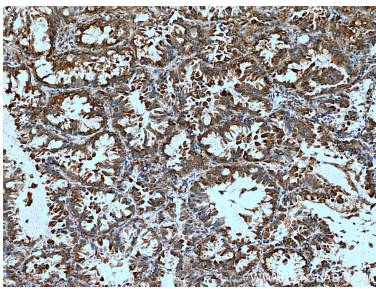
For technical support and original validation data for this product please contact:  
T: 1 (888) 4PTGLAB (1-888-478-4522) (toll free in USA), or 1(312) 455-8498 (outside USA)  
E: [proteintech@ptglab.com](mailto:proteintech@ptglab.com)  
W: [ptglab.com](http://ptglab.com)

This product is exclusively available under Proteintech Group brand and is not available to purchase from any other manufacturer.

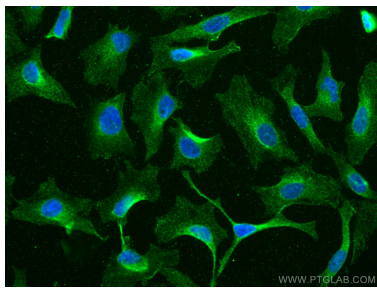
Selected Validation Data



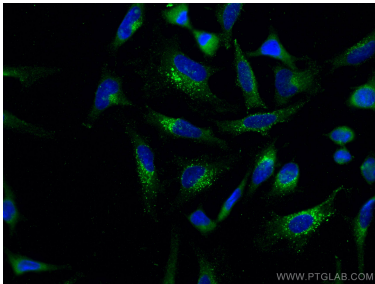
Various lysates were subjected to SDS PAGE followed by western blot with 67712-1-Ig (EPRS antibody) at dilution of 1:20000 incubated at room temperature for 1.5 hours. This data was developed using the same antibody clone with 67712-1-PBS in a different storage buffer formulation.



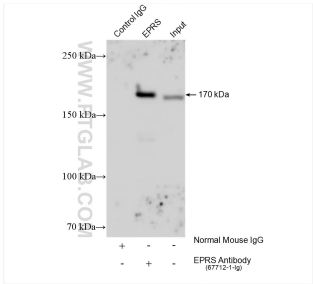
Immunohistochemical analysis of paraffin-embedded human lung cancer tissue slide using 67712-1-Ig (EPRS antibody) at dilution of 1:1000 (under 10x lens). Heat mediated antigen retrieval with Tris-EDTA buffer (pH 9.0). This data was developed using the same antibody clone with 67712-1-PBS in a different storage buffer formulation.



Immunofluorescent analysis of (-20°C Methanol) fixed HeLa cells using EPRS antibody (67712-1-Ig, Clone: 1B7G2 ) at dilution of 1:200 and CoraLite®488-Conjugated AffiniPure Goat Anti-Mouse IgG(H+L). This data was developed using the same antibody clone with 67712-1-PBS in a different storage buffer formulation.



Immunofluorescent analysis of (-20°C Methanol) fixed HeLa cells using EPRS antibody (67712-1-Ig, Clone: 1B7G2 ) at dilution of 1:800 and CoraLite®488-Conjugated AffiniPure Goat Anti-Mouse IgG(H+L). DAPI (blue). This data was developed using the same antibody clone with 67712-1-PBS in a different storage buffer formulation.



IP result of anti-EPRS (IP:67712-1-Ig, 4ug; Detection:67712-1-Ig 1:10000) with HeLa cells lysate 1085 ug. This data was developed using the same antibody clone with 67712-1-PBS in a different storage buffer formulation.