

For Research Use Only

CEP290 Monoclonal antibody

Catalog Number: 67716-1-Ig



Basic Information

Catalog Number:

67716-1-Ig

Size:

150ul , Concentration: 2100 ug/ml by
Nanodrop and 1000 ug/ml by Bradford
method using BSA as the standard;

Source:

Mouse

Isotype:

IgG2b

Immunogen Catalog Number:

AG17457

GenBank Accession Number:

BC008641

GeneID (NCBI):

80184

UNIPROT ID:

O15078

Full Name:

centrosomal protein 290kDa

Calculated MW:

2479 aa, 290 kDa

Observed MW:

290 kDa

Purification Method:

Protein A purification

CloneNo.:

2C10G2

Recommended Dilutions:

WB 1:1000-1:4000

Applications

Tested Applications:

WB, ELISA

Species Specificity:

Human, rat, mouse

Positive Controls:

WB : HEK-293 cells, HSC-T6 cells, HeLa cells, NCCIT
cells, K-562 cells

Background Information

Studies in the Chlamydomonas model system has shown that the ciliary protein CEP290 is a critical component of these Y-link junctions. Additionally, numerous studies have demonstrated that CEP290's function is critical for IFT- in CEP290 knockdown experiments, many proteins that would normally localize to the cilium fail to do so, and cilium formation is disrupted or absent. Mutations in CEP290 are accountable for cases of nephronophthisis, Leber congenital amaurosis and Joubert syndrome. In IF analysis of HeLa cells, the white arrows show centrosome and cilium staining. Two isoforms were produced by alternative splicing with predicted MW of 290 and 180 kDa according to UniProt.

Storage

Storage:

Store at -20°C.

Storage Buffer:

PBS with 0.02% sodium azide and 50% glycerol pH 7.3.

Aliquoting is unnecessary for -20°C storage

*** 20ul sizes contain 0.1% BSA

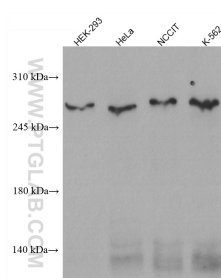
For technical support and original validation data for this product please contact:

T: 1 (888) 4PTGLAB (1-888-478-4522) (toll free
in USA), or 1(312) 455-8498 (outside USA)

E: proteintech@ptglab.com
W: ptglab.com

This product is exclusively available under Proteintech
Group brand and is not available to purchase from any
other manufacturer.

Selected Validation Data



Various lysates were subjected to SDS PAGE followed by western blot with 67716-1-Ig (CEP290 antibody) at dilution of 1:2000 incubated at room temperature for 1.5 hours.