

For Research Use Only

EIF3L Monoclonal antibody

Catalog Number: 67719-1-Ig



Basic Information

Catalog Number:

67719-1-Ig

Size:

150ul, Concentration: 1000 ug/ml by Nanodrop and 447 ug/ml by Bradford method using BSA as the standard;

Source:

Mouse

Isotype:

IgG2a

Immunogen Catalog Number:

AG26680

GenBank Accession Number:

BC007510

GeneID (NCBI):

51386

UNIPROT ID:

Q9Y262

Full Name:

eukaryotic translation initiation factor 3, subunit L

Calculated MW:

67 kDa

Observed MW:

67 kDa

Purification Method:

Protein A purification

CloneNo.:

1B11A10

Recommended Dilutions:

WB: 1:2000-1:10000

IHC: 1:50-1:500

IF-P: 1:200-1:800

IF/ICC: 1:400-1:1600

FC (Intra): 0.40 ug per 10⁶ cells in a 100 µl suspension

Applications

Tested Applications:

WB, IHC, IF/ICC, IF-P, FC (Intra), ELISA

Species Specificity:

human, mouse, rat

Note-IHC: suggested antigen retrieval with TE buffer pH 9.0; (*) Alternatively, antigen retrieval may be performed with citrate buffer pH 6.0

Positive Controls:

WB : A549 cells, HeLa cells, HEK-293 cells, HepG2 cells, Jurkat cells, K-562 cells, HSC-T6 cells, NIH/3T3 cells, LNCaP cells, PC-12 cells, 4T1 cells

IHC : mouse pancreas tissue,

IF-P : mouse pancreas tissue,

IF/ICC : HeLa cells,

FC (Intra) : HeLa cells,

Storage

Storage:

Store at -20°C. Stable for one year after shipment.

Storage Buffer:

PBS with 0.02% sodium azide and 50% glycerol, pH7.3

Aliquoting is unnecessary for -20°C storage

*** 20ul sizes contain 0.1% BSA

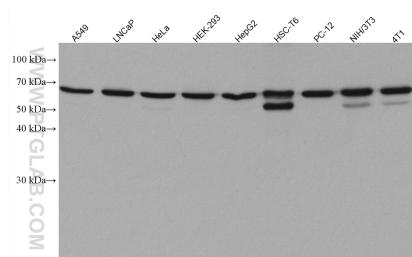
For technical support and original validation data for this product please contact:

T: 1 (888) 4PTGLAB (1-888-478-4522) (toll free in USA), or 1(312) 455-8498 (outside USA)

E: proteintech@ptglab.com
W: ptglab.com

This product is exclusively available under Proteintech Group brand and is not available to purchase from any other manufacturer.

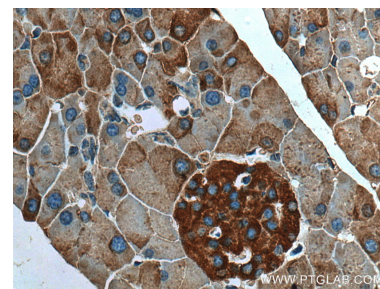
Selected Validation Data



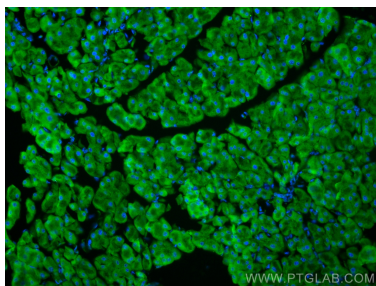
Various lysates were subjected to SDS PAGE followed by western blot with 67719-1-Ig (EIF3L antibody) at dilution of 1:5000 incubated at room temperature for 1.5 hours.



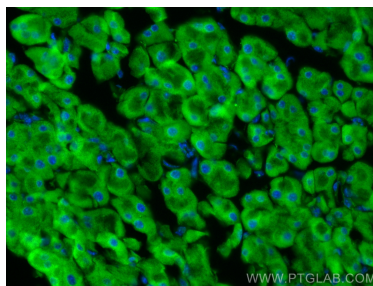
Immunohistochemical analysis of paraffin-embedded mouse pancreas tissue slide using 67719-1-Ig (EIF3L antibody) at dilution of 1:200 (under 10x lens). Heat mediated antigen retrieval with Tris-EDTA buffer (pH 9.0).



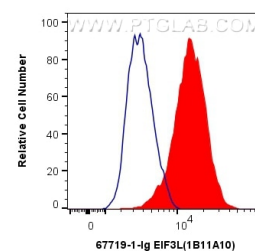
Immunohistochemical analysis of paraffin-embedded mouse pancreas tissue slide using 67719-1-Ig (EIF3L antibody) at dilution of 1:200 (under 40x lens). Heat mediated antigen retrieval with Tris-EDTA buffer (pH 9.0).



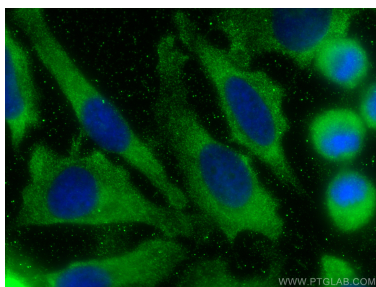
Immunofluorescent analysis of (4% PFA) fixed mouse pancreas tissue using EIF3L antibody (67719-1-Ig, Clone: 1B11A10) at dilution of 1:400 and CoraLite®488-Conjugated Goat Anti-Mouse IgG(H+L).



Immunofluorescent analysis of (4% PFA) fixed mouse pancreas tissue using EIF3L antibody (67719-1-Ig, Clone: 1B11A10) at dilution of 1:400 and CoraLite®488-Conjugated Goat Anti-Mouse IgG(H+L).



1X10⁶ HeLa cells were intracellularly stained with 0.4 ug Anti-Human EIF3L (67719-1-Ig, Clone:1B11A10) and CoraLite®488-Conjugated Goat Anti-Mouse IgG(H+L) at dilution 1:1000 (red), or 0.4 ug Mouse IgG2a Isotype Control (C1.18.4) (65208-1-Ig, Clone: C1.18.4) (blue). Cells were fixed with 4% PFA and permeabilized with Flow Cytometry Perm Buffer (PF00011-C).



Immunofluorescent analysis of (-20°C Methanol) fixed HeLa cells using EIF3L antibody (67719-1-Ig, Clone: 1B11A10) at dilution of 1:800 and CoraLite®488-Conjugated Goat Anti-Mouse IgG(H+L).