

For Research Use Only

EIF3L Monoclonal antibody

Catalog Number: 67719-1-Ig



Basic Information

Catalog Number: 67719-1-Ig	GenBank Accession Number: BC007510	Purification Method: Protein A purification
Size: 150ul , Concentration: 1000 ug/ml by Nanodrop and 447 ug/ml by Bradford method using BSA as the standard;	GeneID (NCBI): 51386	CloneNo.: 1B11A10
Source: Mouse	UNIPROT ID: Q9Y262	Recommended Dilutions: WB 1:2000-1:10000 IHC 1:50-1:500 IF-P 1:200-1:800 IF/ICC 1:400-1:1600
Isotype: IgG2a	Full Name: eukaryotic translation initiation factor 3, subunit L	
Immunogen Catalog Number: AG26680	Calculated MW: 67 kDa	
	Observed MW: 67 kDa	

Applications

Tested Applications: WB, IHC, IF/ICC, IF-P, FC (Intra), ELISA	Positive Controls: WB : A549 cells, HeLa cells, HEK-293 cells, HepG2 cells, Jurkat cells, K-562 cells, HSC-T6 cells, NIH/3T3 cells, LNCaP cells, PC-12 cells, 4T1 cells
Species Specificity: human, mouse, rat	IHC : mouse pancreas tissue,
Note-IHC: suggested antigen retrieval with TE buffer pH 9.0; (*) Alternatively, antigen retrieval may be performed with citrate buffer pH 6.0	IF-P : mouse pancreas tissue,
	IF/ICC : HeLa cells,

Storage

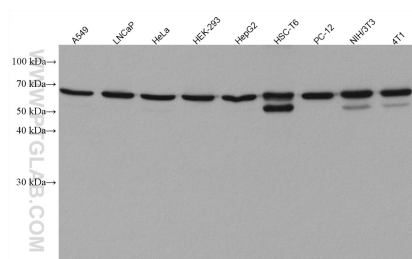
Storage:
Store at -20°C. Stable for one year after shipment.
Storage Buffer:
PBS with 0.02% sodium azide and 50% glycerol pH 7.3.
Aliquoting is unnecessary for -20°C storage

*** 20ul sizes contain 0.1% BSA

For technical support and original validation data for this product please contact:
T: 1 (888) 4PTGLAB (1-888-478-4522) (toll free in USA), or 1(312) 455-8498 (outside USA)
E: proteintech@ptglab.com
W: ptglab.com

This product is exclusively available under Proteintech Group brand and is not available to purchase from any other manufacturer.

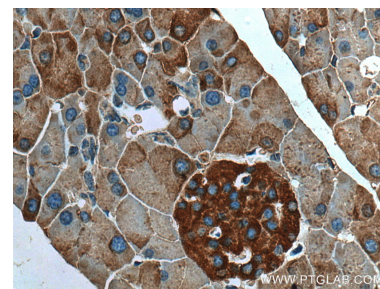
Selected Validation Data



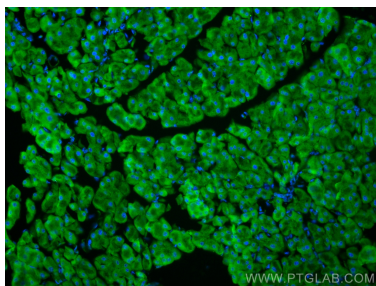
Various lysates were subjected to SDS PAGE followed by western blot with 67719-1-Ig (EIF3L antibody) at dilution of 1:5000 incubated at room temperature for 1.5 hours.



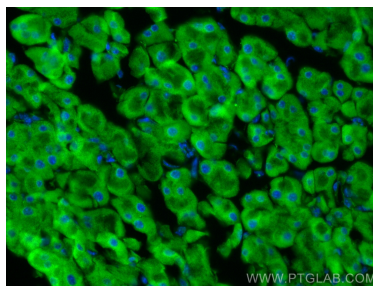
Immunohistochemical analysis of paraffin-embedded mouse pancreas tissue slide using 67719-1-Ig (EIF3L antibody) at dilution of 1:200 (under 10x lens). Heat mediated antigen retrieval with Tris-EDTA buffer (pH 9.0).



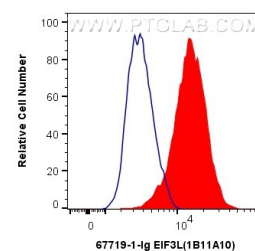
Immunohistochemical analysis of paraffin-embedded mouse pancreas tissue slide using 67719-1-Ig (EIF3L antibody) at dilution of 1:200 (under 40x lens). Heat mediated antigen retrieval with Tris-EDTA buffer (pH 9.0).



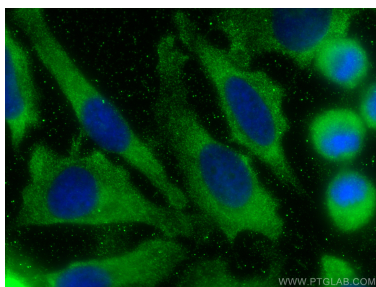
Immunofluorescent analysis of (4% PFA) fixed mouse pancreas tissue using EIF3L antibody (67719-1-Ig, Clone: 1B11A10) at dilution of 1:400 and CoraLite®488-Conjugated Goat Anti-Mouse IgG(H+L).



Immunofluorescent analysis of (4% PFA) fixed mouse pancreas tissue using EIF3L antibody (67719-1-Ig, Clone: 1B11A10) at dilution of 1:400 and CoraLite®488-Conjugated Goat Anti-Mouse IgG(H+L).



1X10⁶ HeLa cells were intracellularly stained with 0.4 ug Anti-Human EIF3L (67719-1-Ig, Clone:1B11A10) and CoraLite®488-Conjugated Goat Anti-Mouse IgG(H+L) at dilution 1:1000 (red), or 0.4 ug Mouse IgG2a Isotype Control (C1.18.4) (65208-1-Ig, Clone: C1.18.4) (blue). Cells were fixed with 4% PFA and permeabilized with Flow Cytometry Perm Buffer (PF00011-C).



Immunofluorescent analysis of (-20°C Methanol) fixed HeLa cells using EIF3L antibody (67719-1-Ig, Clone: 1B11A10) at dilution of 1:800 and CoraLite®488-Conjugated Goat Anti-Mouse IgG(H+L).