

For Research Use Only

EIF3L Monoclonal antibody, PBS Only

Catalog Number: 67719-1-PBS



Basic Information

Catalog Number:

67719-1-PBS

Size:

100ug, Concentration: 1mg/ml by Nanodrop;

Source:

Mouse

Isotype:

IgG2a

Immunogen Catalog Number:

AG26680

GenBank Accession Number:

BC007510

GeneID (NCBI):

51386

UNIPROT ID:

Q9Y262

Full Name:

eukaryotic translation initiation factor 3, subunit L

Calculated MW:

67 kDa

Observed MW:

67 kDa

Purification Method:

Protein A purification

CloneNo.:

1B11A10

Applications

Tested Applications:

WB, IHC, IF/ICC, IF-P, Indirect ELISA

Species Specificity:

human, mouse, rat

Storage

Storage:

Store at -80°C.

Storage Buffer:

PBS Only

For technical support and original validation data for this product please contact:

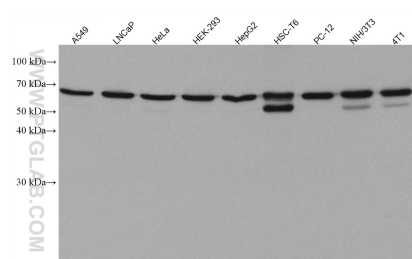
T: 1 (888) 4PTGLAB (1-888-478-4522) (toll free in USA), or 1(312) 455-8498 (outside USA)

E: proteintech@ptglab.com

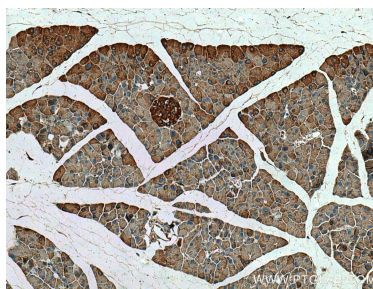
W: ptglab.com

This product is exclusively available under Proteintech Group brand and is not available to purchase from any other manufacturer.

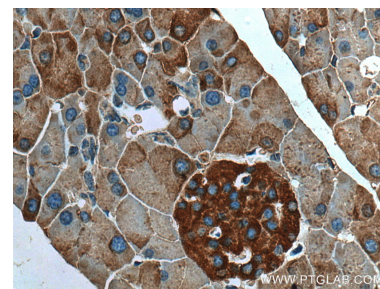
Selected Validation Data



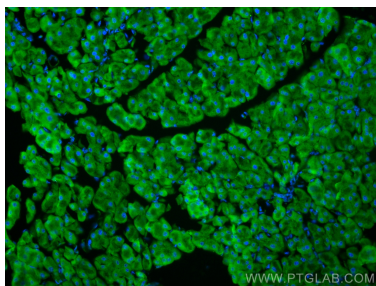
Various lysates were subjected to SDS PAGE followed by western blot with 67719-1-Ig (EIF3L antibody) at dilution of 1:5000 incubated at room temperature for 1.5 hours. This data was developed using the same antibody clone with 67719-1-PBS in a different storage buffer formulation.



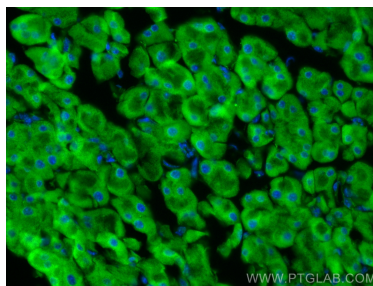
Immunohistochemical analysis of paraffin-embedded mouse pancreas tissue slide using 67719-1-Ig (EIF3L antibody) at dilution of 1:200 (under 10x lens). Heat mediated antigen retrieval with Tris-EDTA buffer (pH 9.0). This data was developed using the same antibody clone with 67719-1-PBS in a different storage buffer formulation.



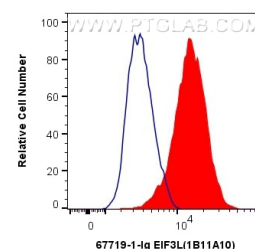
Immunohistochemical analysis of paraffin-embedded mouse pancreas tissue slide using 67719-1-Ig (EIF3L antibody) at dilution of 1:200 (under 40x lens). Heat mediated antigen retrieval with Tris-EDTA buffer (pH 9.0). This data was developed using the same antibody clone with 67719-1-PBS in a different storage buffer formulation.



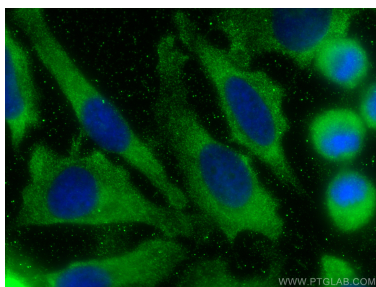
Immunofluorescent analysis of (4% PFA) fixed mouse pancreas tissue using EIF3L antibody (67719-1-Ig, Clone: 1B11A10) at dilution of 1:400 and CoraLite®488-Conjugated AffiniPure Goat Anti-Mouse IgG(H+L). This data was developed using the same antibody clone with 67719-1-PBS in a different storage buffer formulation.



Immunofluorescent analysis of (4% PFA) fixed mouse pancreas tissue using EIF3L antibody (67719-1-Ig, Clone: 1B11A10) at dilution of 1:400 and CoraLite®488-Conjugated AffiniPure Goat Anti-Mouse IgG(H+L). This data was developed using the same antibody clone with 67719-1-PBS in a different storage buffer formulation.



1X10⁶ HeLa cells were intracellularly stained with 0.4 ug Anti-Human EIF3L (67719-1-Ig, Clone:1B11A10) and CoraLite®488-Conjugated AffiniPure Goat Anti-Mouse IgG(H+L) at dilution 1:1000 (red), or 0.4 ug Mouse IgG2a Isotype Control (C1.18.4) (65208-1-Ig, Clone: C1.18.4) (blue). Cells were fixed with 4% PFA and permeabilized with Flow Cytometry Perm Buffer (PF00011-C). This data was developed using the same antibody clone with 67719-1-PBS in a



Immunofluorescent analysis of (-20°C Methanol) fixed HeLa cells using EIF3L antibody (67719-1-Ig, Clone: 1B11A10) at dilution of 1:800 and CoraLite®488-Conjugated AffiniPure Goat Anti-Mouse IgG(H+L). This data was developed using the same antibody clone with 67719-1-PBS in a different storage buffer formulation.