

For Research Use Only

PSIP1 Monoclonal antibody, PBS Only (Capture)

Catalog Number: 67723-1-PBS



Basic Information

Catalog Number: 67723-1-PBS	GenBank Accession Number: NM_021144	Purification Method: Protein G purification
Size: 100ug , Concentration: 1mg/ml by Nanodrop;	GeneID (NCBI): 11168	CloneNo.: 1E9E7
Source: Mouse	UNIPROT ID: O75475	
Isotype: IgG1	Full Name: PC4 and SFRS1 interacting protein 1	
Immunogen Catalog Number: AG30562	Calculated MW: 60 kDa	
	Observed MW: 75 kDa	

Applications

Tested Applications:
WB, IF/ICC, Cytometric bead array, Indirect ELISA

Species Specificity:
human, mouse

Product Information

67723-1-PBS targets PSIP1 as part of a matched antibody pair:

MP50375-1: 67723-1-PBS capture and 68941-1-PBS detection (validated in Cytometric bead array)

Unconjugated mouse monoclonal antibody pair in PBS only (BSA and azide free) storage buffer at a concentration of 1 mg/mL, ready for conjugation.

This conjugation ready format makes antibodies ideal for use in many applications including: ELISAs, multiplex assays requiring matched pairs, mass cytometry, and multiplex imaging applications. Antibody use should be optimized by the end user for each application and assay.

Background Information

PSIP1, also known as PC4 and SRSF1 Interacting Protein 1 or Lens Epithelium-Derived Growth Factor (LEDGF), is a transcriptional coactivator involved in neuroepithelial stem cell differentiation and neurogenesis. It also plays a role in lens epithelial cell gene regulation and stress responses. It is a chromatin-associated protein with histone chaperone activity, involved in transcriptional elongation. PSIP1 may act as an adapter to coordinate pre-mRNA splicing. PSIP1 encodes two protein isoforms with molecular masses of 52 and 75 kDa. p52 and p75 were identified as interacting with transcription factor PC4 and shown to act as transcriptional coactivators.

Storage

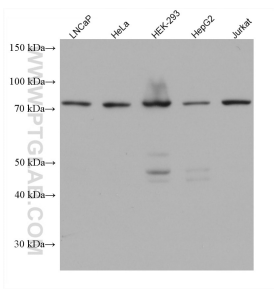
Storage:
Store at -80°C.

Storage Buffer:
PBS Only

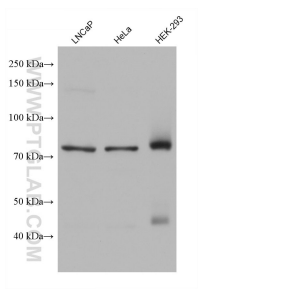
For technical support and original validation data for this product please contact:
T: 1 (888) 4PTGLAB (1-888-478-4522) (toll free in USA), or 1(312) 455-8498 (outside USA)
E: proteintech@ptglab.com
W: ptglab.com

This product is exclusively available under Proteintech Group brand and is not available to purchase from any other manufacturer.

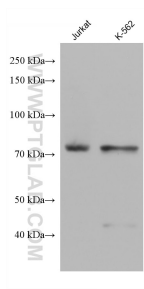
Selected Validation Data



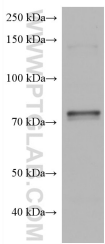
Various lysates were subjected to SDS PAGE followed by western blot with 67723-1-Ig (PSIP1 antibody) at dilution of 1:10000 incubated at room temperature for 1.5 hours. This data was developed using the same antibody clone with 67723-1-PBS in a different storage buffer formulation.



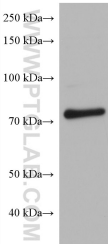
Various lysates were subjected to SDS PAGE followed by western blot with 67723-1-Ig (PSIP1 antibody) at dilution of 1:10000 incubated at room temperature for 1.5 hours. This data was developed using the same antibody clone with 67723-1-PBS in a different storage buffer formulation.



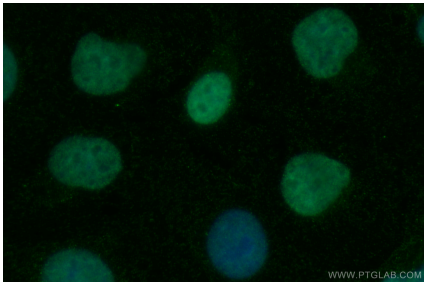
Various lysates were subjected to SDS PAGE followed by western blot with 67723-1-Ig (PSIP1 antibody) at dilution of 1:10000 incubated at room temperature for 1.5 hours. This data was developed using the same antibody clone with 67723-1-PBS in a different storage buffer formulation.



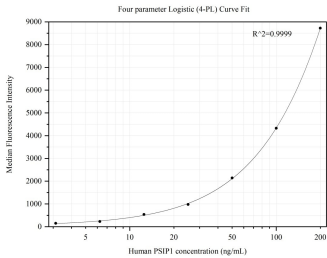
U2OS cells were subjected to SDS PAGE followed by western blot with 67723-1-Ig (PSIP1 antibody) at dilution of 1:10000 incubated at room temperature for 1.5 hours. This data was developed using the same antibody clone with 67723-1-PBS in a different storage buffer formulation.



NIH/3T3 cells were subjected to SDS PAGE followed by western blot with 67723-1-Ig (PSIP1 antibody) at dilution of 1:10000 incubated at room temperature for 1.5 hours. This data was developed using the same antibody clone with 67723-1-PBS in a different storage buffer formulation.



Immunofluorescent analysis of (4% PFA) fixed U2OS cells using PSIP1 antibody (67723-1-Ig, Clone: 1E9E7) at dilution of 1:1000 and CoraLite®488-Conjugated AffiniPure Goat Anti-Mouse IgG(H+L). This data was developed using the same antibody clone with 67723-1-PBS in a different storage buffer formulation.



Cytometric bead array standard curve of MP50375-1, PSIP1 Monoclonal Matched Antibody Pair, PBS Only. Capture antibody: 67723-1-PBS. Detection antibody: 68941-1-PBS. Standard:Ag21886. Range: 3.125-200 ng/mL.