

For Research Use Only

Cyclin B2 Monoclonal antibody

Catalog Number: 67726-1-Ig

Featured Product

1 Publications



Basic Information

Catalog Number:

67726-1-Ig

Size:

150ul, Concentration: 1600 ug/ml by Nanodrop and 1000 ug/ml by Bradford method using BSA as the standard;

Source:

Mouse

Isotype:

IgG2a

Immunogen Catalog Number:

AG16329

GenBank Accession Number:

BC105086

GeneID (NCBI):

9133

UNIPROT ID:

O95067

Full Name:

cyclin B2

Calculated MW:

398 aa, 45 kDa

Observed MW:

45 kDa

Purification Method:

Protein A purification

CloneNo.:

2G8B7

Recommended Dilutions:

WB 1:1000-1:4000

IHC 1:50-1:500

IF-P 1:200-1:800

IF/ICC 1:200-1:800

Applications

Tested Applications:

WB, IHC, IF/ICC, IF-P, ELISA

Cited Applications:

IHC

Species Specificity:

human, mouse

Cited Species:

human

Note-IHC: suggested antigen retrieval with TE buffer pH 9.0; (*) Alternatively, antigen retrieval may be performed with citrate buffer pH 6.0

Positive Controls:

WB: DU 145 cells, HeLa cells, K-562 cells, Jurkat cells, HEK-293 cells, U2OS cells

IHC: human breast cancer tissue,

IF-P: mouse testis tissue,

IF/ICC: PC-12 cells,

Background Information

Cyclin B2 (CCNB2) is a member of cyclin family proteins, which regulate the activities of cyclin dependent kinases (CDKs) and different cyclins function spatially and temporally in specific phases of the cell cycle. Cyclin B2 serves a key role in progression of G2/M transition. Cyclin B2 has been found to be up-regulated in a variety of human cancers, such as adrenocortical carcinoma, breast carcinoma, colorectal adenocarcinoma, pituitary adenoma and gastric cancer. The aberrant expression of Cyclin B2 deregulates spindle checkpoints in the cell cycle and results in chromosomal instability (CIN), one of the signature phenotypes of most cancers. Moreover, serum circulating Cyclin B2 mRNA expression has been found increased in cancer patients and associated with cancer stage and metastasis status.

Notable Publications

Author	Pubmed ID	Journal	Application
Jiayue Qi	39479232	Onco Targets Ther	IHC

Storage

Storage:

Store at -20°C. Stable for one year after shipment.

Storage Buffer:

PBS with 0.02% sodium azide and 50% glycerol pH 7.3.

Aliquoting is unnecessary for -20°C storage

*** 20ul sizes contain 0.1% BSA

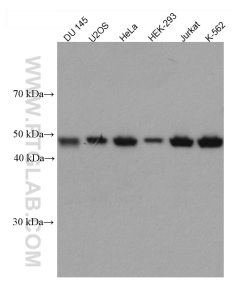
For technical support and original validation data for this product please contact:

T: 1 (888) 4PTGLAB (1-888-478-4522) (toll free in USA), or 1(312) 455-8498 (outside USA)

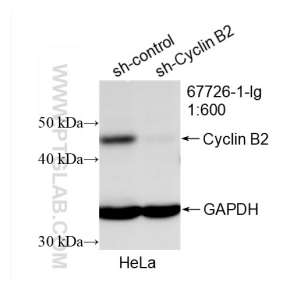
E: proteintech@ptglab.com
W: ptglab.com

This product is exclusively available under Proteintech Group brand and is not available to purchase from any other manufacturer.

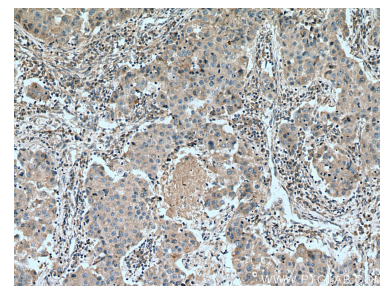
Selected Validation Data



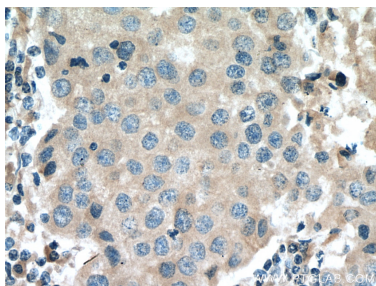
Various lysates were subjected to SDS PAGE followed by western blot with 67726-1-Ig (CCNB2 antibody) at dilution of 1:2000 incubated at room temperature for 1.5 hours.



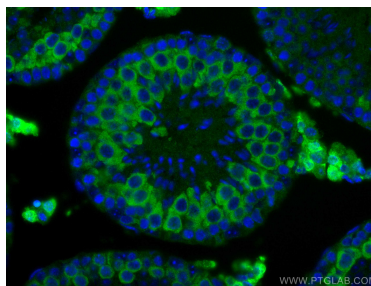
WB result of Cyclin B2 antibody (67726-1-Ig; 1:600; incubated at room temperature for 1.5 hours) with sh-Control and sh-Cyclin B2 transfected HeLa cells.



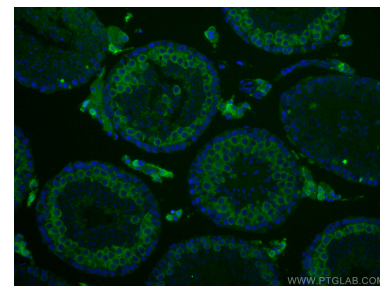
Immunohistochemical analysis of paraffin-embedded human breast cancer tissue slide using 67726-1-Ig (Cyclin B2 antibody) at dilution of 1:200 (under 10x lens). Heat mediated antigen retrieval with Tris-EDTA buffer (pH 9.0).



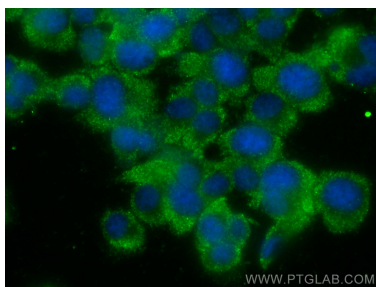
Immunohistochemical analysis of paraffin-embedded human breast cancer tissue slide using 67726-1-Ig (Cyclin B2 antibody) at dilution of 1:200 (under 40x lens). Heat mediated antigen retrieval with Tris-EDTA buffer (pH 9.0).



Immunofluorescent analysis of (4% PFA) fixed mouse testis tissue using Cyclin B2 antibody (67726-1-Ig, Clone: 2G8B7) at dilution of 1:400 and CoraLite®488-Conjugated Goat Anti-Mouse IgG(H+L).



Immunofluorescent analysis of (4% PFA) fixed mouse testis tissue using Cyclin B2 antibody (67726-1-Ig, Clone: 2G8B7) at dilution of 1:400 and CoraLite®488-Conjugated Goat Anti-Mouse IgG(H+L).



Immunofluorescent analysis of (-20°C Ethanol) fixed PC-12 cells using Cyclin B2 antibody (67726-1-Ig, Clone: 2G8B7) at dilution of 1:400 and CoraLite®488-Conjugated Goat Anti-Mouse IgG(H+L).