

For Research Use Only

CAPN1 Monoclonal antibody

Catalog Number: 67732-1-Ig

Featured Product

3 Publications



Basic Information

Catalog Number:

67732-1-Ig

Size:

150ul, Concentration: 500 ug/ml by Nanodrop and 229 ug/ml by Bradford method using BSA as the standard;

Source:

Mouse

Isotype:

IgG2b

Immunogen Catalog Number:

AG30522

GenBank Accession Number:

BC008751

GeneID (NCBI):

823

UNIPROT ID:

P07384

Full Name:

calpain 1, (mu/l) large subunit

Calculated MW:

704 aa, 82 kDa

Observed MW:

75 kDa

Purification Method:

Protein A purification

CloneNo.:

4E6H1

Recommended Dilutions:

WB 1:5000-1:50000

IHC 1:500-1:2000

Applications

Tested Applications:

WB, IHC, ELISA

Cited Applications:

WB, IF

Species Specificity:

Human

Cited Species:

human, mouse

Note-IHC: suggested antigen retrieval with TE buffer pH 9.0; (*) Alternatively, antigen retrieval may be performed with citrate buffer pH 6.0

Positive Controls:

WB : A431 cells, HeLa cells, Jurkat cells, LNCaP cells, T-47D cells, K562 cells

IHC : human urothelial carcinoma tissue, human heart tissue

Notable Publications

Author	Pubmed ID	Journal	Application
Stephanie Pei Tung Yiu	35263599	Cell Rep	WB
Yan Meng	36510594	Neural Plast	WB,IF
Fengming Shen	35498131	Oxid Med Cell Longev	WB

Storage

Storage:

Store at -20°C.

Storage Buffer:

PBS with 0.02% sodium azide and 50% glycerol pH 7.3.

Aliquoting is unnecessary for -20°C storage

*** 20ul sizes contain 0.1% BSA

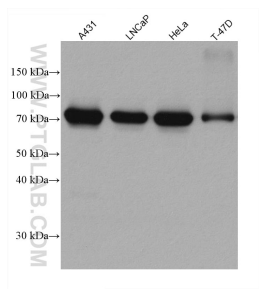
For technical support and original validation data for this product please contact:

T: 1 (888) 4PTGLAB (1-888-478-4522) (toll free in USA), or 1(312) 455-8498 (outside USA)

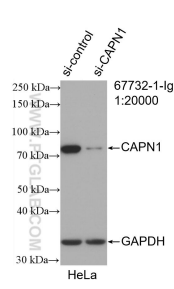
E: proteintech@ptglab.com
W: ptglab.com

This product is exclusively available under Proteintech Group brand and is not available to purchase from any other manufacturer.

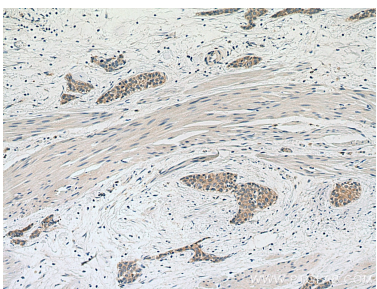
Selected Validation Data



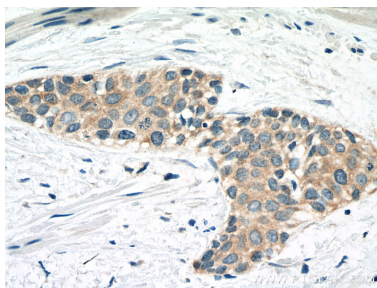
Various lysates were subjected to SDS PAGE followed by western blot with 67732-1-Ig (CAPN1 antibody) at dilution of 1:10000 incubated at room temperature for 1.5 hours.



WB result of CAPN1 antibody (67732-1-Ig; 1:20000; incubated at room temperature for 1.5 hours) with sh-Control and sh-CAPN1 transfected HeLa cells.



Immunohistochemical analysis of paraffin-embedded human urothelial carcinoma tissue slide using 67732-1-Ig (CAPN1 antibody) at dilution of 1:1000 (under 10x lens). Heat mediated antigen retrieval with Tris-EDTA buffer (pH 9.0).



Immunohistochemical analysis of paraffin-embedded human urothelial carcinoma tissue slide using 67732-1-Ig (CAPN1 antibody) at dilution of 1:1000 (under 40x lens). Heat mediated antigen retrieval with Tris-EDTA buffer (pH 9.0).