

For Research Use Only

# METTL3 Monoclonal antibody

Catalog Number: 67733-1-Ig

Featured Product

21 Publications



## Basic Information

Catalog Number:

67733-1-Ig

Size:

150ul, Concentration: 1000 ug/ml by Nanodrop and 407 ug/ml by Bradford method using BSA as the standard;

Source:

Mouse

Isotype:

IgG1

Immunogen Catalog Number:

AG7110

GenBank Accession Number:

BC001650

GeneID (NCBI):

56339

UNIPROT ID:

Q86U44

Full Name:

methyltransferase like 3

Calculated MW:

64 kDa

Observed MW:

65-70 kDa

Purification Method:

Protein G purification

CloneNo.:

2D8H1

Recommended Dilutions:

WB 1:5000-1:50000

IHC 1:500-1:2000

IF-P 1:200-1:800

## Applications

Tested Applications:

WB, IHC, IF-P, FC (Intra), ELISA

Cited Applications:

WB, IHC, IF, IP, CoIP, RIP

Species Specificity:

Human, mouse

Cited Species:

human, mouse, rat

**Note-IHC: suggested antigen retrieval with TE buffer pH 9.0; (\*) Alternatively, antigen retrieval may be performed with citrate buffer pH 6.0**

Positive Controls:

WB : HeLa cells, A549 cells, HEK-293 cells, HepG2 cells, Jurkat cells, K-562 cells

IHC : human lung cancer tissue, human urothelial carcinoma tissue, human colon cancer tissue, human oesophagus cancer tissue

IF-P : mouse testis tissue,

## Background Information

METTL3 is a key S-adenosyl-L-methionine-binding subunit, which is component of a complex multicomponent enzyme that catalyzes the methylation of internal adenosine residues in eukaryotic mRNA, forming N6-methyladenosine. It contains 2 putative nuclear localization signals and 2 consensus methylation motifs. The calculated molecular weight of METTL3 is 64 kDa, but modified METTL3 is about 65-70 kDa.

## Notable Publications

Author	Pubmed ID	Journal	Application
Yanan Wang	36293529	Int J Mol Sci	WB, IHC
Zewei Sun	36368640	Clin Immunol	IF, IP
Yang Wang	36333630	Apoptosis	WB

## Storage

Storage:

Store at -20°C. Stable for one year after shipment.

Storage Buffer:

PBS with 0.02% sodium azide and 50% glycerol pH 7.3.

Aliquoting is unnecessary for -20°C storage

\*\*\* 20ul sizes contain 0.1% BSA

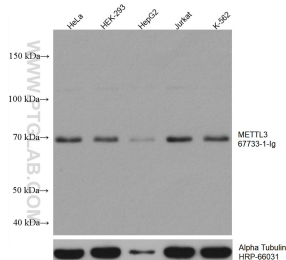
For technical support and original validation data for this product please contact:

T: 1 (888) 4PTGLAB (1-888-478-4522) (toll free in USA), or 1(312) 455-8498 (outside USA)

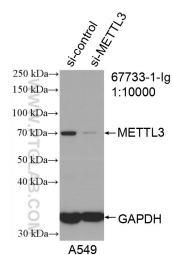
E: [proteintech@ptglab.com](mailto:proteintech@ptglab.com)  
W: [ptglab.com](http://ptglab.com)

This product is exclusively available under Proteintech Group brand and is not available to purchase from any other manufacturer.

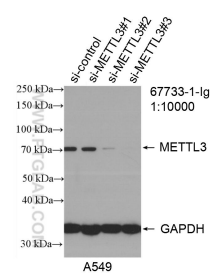
## Selected Validation Data



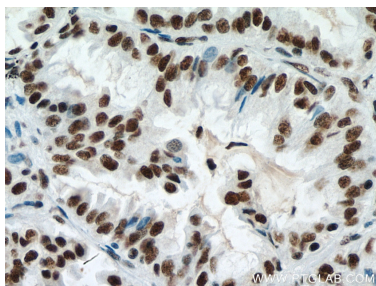
Various lysates were subjected to SDS PAGE followed by western blot with 67733-1-Ig (METTL3 antibody) at dilution of 1:10000 incubated at room temperature for 1.5 hours. The membrane was stripped and reblotted with HRP-conjugated Alpha Tubulin Monoclonal antibody (HRP-66031) as loading control.



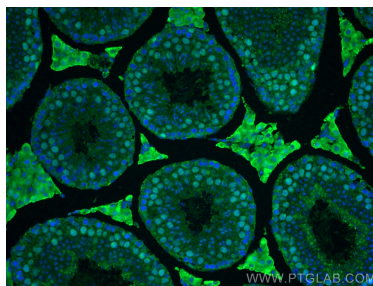
WB result of METTL3 antibody (67733-1-Ig; 1:10000; incubated at room temperature for 1.5 hours) with sh-Control and sh-METTL3 transfected A549 cells.



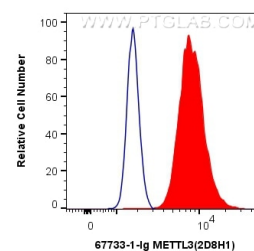
WB result of METTL3 antibody (67733-1-Ig; 1:10000; incubated at room temperature for 1.5 hours) with sh-Control and sh-METTL3 transfected A549 cells.



Immunohistochemical analysis of paraffin-embedded human lung cancer tissue slide using 67733-1-Ig (METTL3 antibody) at dilution of 1:1000 (under 40x lens). Heat mediated antigen retrieval with Tris-EDTA buffer (pH 9.0).



Immunofluorescent analysis of (4% PFA) fixed mouse testis tissue using METTL3 antibody (67733-1-Ig, Clone: 2D8H1) at dilution of 1:400 and CoraLite® 488-Conjugated Goat Anti-Mouse IgG(H+L).



1X10<sup>6</sup> HEK-293 cells were intracellularly stained with 0.4 ug Anti-Human METTL3 (67733-1-Ig, Clone:2D8H1) and CoraLite® 488-Conjugated Goat Anti-Mouse IgG(H+L) at dilution 1:1000 (red), or 0.4 ug Control Antibody. Cells were fixed and permeabilized with Transcription Factor Staining Buffer Kit (PF00011).