

# CTPS2 Monoclonal antibody

Catalog Number: 67734-1-Ig

## Basic Information

<b>Catalog Number:</b> 67734-1-Ig	<b>GenBank Accession Number:</b> BC034986	<b>Purification Method:</b> Protein A purification
<b>Size:</b> 150ul , Concentration: 1000 µg/ml by Nanodrop and 692 µg/ml by Bradford method using BSA as the standard;	<b>GeneID (NCBI):</b> 56474	<b>CloneNo.:</b> 1A3B8
<b>Source:</b> Mouse	<b>Full Name:</b> CTP synthase II	<b>Recommended Dilutions:</b> WB 1:2000-1:10000 IHC 1:250-1:1000 IF 1:400-1:1600
<b>Isotype:</b> IgG2a	<b>Calculated MW:</b> 586 aa, 66 kDa	
<b>Immunogen Catalog Number:</b> AG30258	<b>Observed MW:</b> 66 kDa	

## Applications

<b>Tested Applications:</b> IF, IHC, WB, ELISA	<b>Positive Controls:</b>
<b>Species Specificity:</b> Human, Mouse	<b>WB :</b> LNCaP cells, U2OS cells, HeLa cells, HEK-293 cells, HepG2 cells, K-562 cells, PC-12 cells, NIH/3T3 cells, RAW 264.7 cells
<b>Note-IHC:</b> suggested antigen retrieval with <b>TE buffer pH 9.0; (*) Alternatively, antigen retrieval may be performed with citrate buffer pH 6.0</b>	<b>IHC :</b> human prostate cancer tissue,
	<b>IF :</b> PC-12 cells, human prostate cancer tissue

## Background Information

CTPS2 (CTP synthase 2) is also named as UTP--ammonia ligase 2 and belongs to the CTP synthase family. It catalyzes the ATP-dependent amination of UTP to CTP with either L-glutamine or ammonia as the source of nitrogen and constitutes the rate-limiting enzyme in the synthesis of cytosine nucleotides.

## Storage

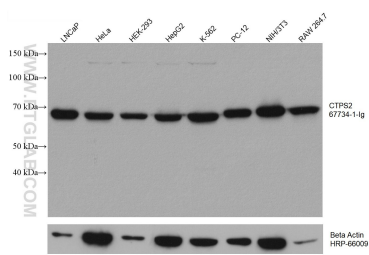
**Storage:**  
Store at -20°C. Stable for one year after shipment.  
**Storage Buffer:**  
PBS with 0.02% sodium azide and 50% glycerol pH 7.3.  
**Aliquoting is unnecessary for -20°C storage**

\*\*\* 20ul sizes contain 0.1% BSA

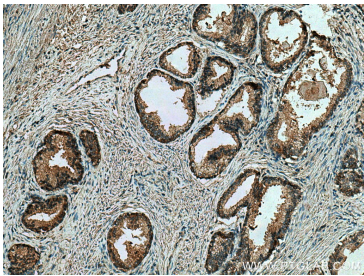
For technical support and original validation data for this product please contact:  
T: 1 (888) 4PTGLAB (1-888-478-4522) (toll free in USA), or 1(312) 455-8498 (outside USA)  
E: [proteintech@ptglab.com](mailto:proteintech@ptglab.com)  
W: [ptglab.com](http://ptglab.com)

This product is exclusively available under Proteintech Group brand and is not available to purchase from any other manufacturer.

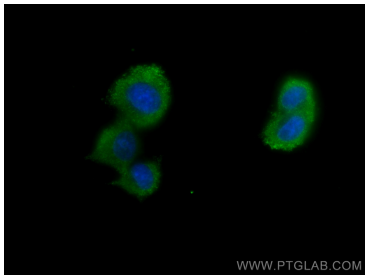
Selected Validation Data



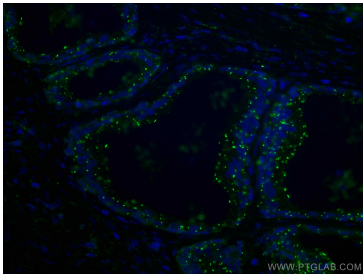
Various lysates were subjected to SDS PAGE followed by western blot with 67734-1-Ig (CTPS2 antibody) at dilution of 1:5000 incubated at room temperature for 1.5 hours. The membrane was stripped and reblotted with HRP-conjugated Beta Actin Monoclonal antibody (HRP-66009) as loading control.



Immunohistochemical analysis of paraffin-embedded human prostate cancer tissue slide using 67734-1-Ig (CTPS2 antibody) at dilution of 1:500 (under 10x lens). Heat mediated antigen retrieval with Tris-EDTA buffer (pH 9.0).



Immunofluorescent analysis of (-20°C Methanol) fixed PC-12 cells using CTPS2 antibody (67734-1-Ig, Clone: 1A3B8 ) at dilution of 1:800 and CoraLite@488-Conjugated AffiniPure Goat Anti-Mouse IgG(H+L).



Immunofluorescent analysis of (4% PFA) fixed human prostate cancer tissue using CTPS2 antibody (67734-1-Ig, Clone: 1A3B8 ) at dilution of 1:400 and CoraLite@488-Conjugated AffiniPure Goat Anti-Mouse IgG(H+L).