

For Research Use Only

# PTGES3 Monoclonal antibody

Catalog Number: 67736-1-Ig **3 Publications**



## Basic Information

<b>Catalog Number:</b> 67736-1-Ig	<b>GenBank Accession Number:</b> BC003005	<b>Purification Method:</b> Protein G purification
<b>Size:</b> 150ul, Concentration: 1000 µg/ml by Nanodrop;	<b>GeneID (NCBI):</b> 10728	<b>CloneNo.:</b> 3C11D11
<b>Source:</b> Mouse	<b>Full Name:</b> prostaglandin E synthase 3 (cytosolic)	<b>Recommended Dilutions:</b> WB 1:5000-1:50000 IHC 1:500-1:2000 IF 1:200-1:800
<b>Isotype:</b> IgG1	<b>Calculated MW:</b> 19 kDa	
<b>Immunogen Catalog Number:</b> AG7870	<b>Observed MW:</b> 22 kDa	

## Applications

**Tested Applications:**  
IF, IHC, WB, ELISA

**Cited Applications:**  
WB

**Species Specificity:**  
Human, mouse, pig, rat

**Cited Species:**  
human

**Note-IHC: suggested antigen retrieval with TE buffer pH 9.0; (\*) Alternatively, antigen retrieval may be performed with citrate buffer pH 6.0**

**Positive Controls:**

**WB:** A549 cells, PC-3 cells, HeLa cells, HepG2 cells, HSC-T6 cells, NIH/3T3 cells, pig brain tissue

**IHC:** human lung cancer tissue,

**IF:** HepG2 cells,

## Background Information

p23, encoded by the gene PTGES3, plays a key role in glucocorticoid signaling and was increased at the mRNA level in the DLPFC in individuals with schizophrenia (PMID: 24345775). In the GR heterocomplex in vitro, p23 is an obligatory co-factor<sup>19</sup> and is the limiting component of the complex<sup>44</sup>, functioning to stabilize the interaction of the complex with GR in the cytoplasm. Paradoxically, p23 also acts in the nucleus to inhibit GR-mediated gene transcription and disassemble GR transcriptional machinery in the nucleus (PMID: 12077419). In vivo, p23 is critical for appropriate glucocorticoid responsiveness (PMID: 17000766).

## Notable Publications

Author	Pubmed ID	Journal	Application
Pengxiang Gao	35820363	Int Immunopharmacol	WB
Qinan Yin	38245717	J Transl Med	WB
Fangfang Bi	38017014	Cell Death Discov	WB

## Storage

**Storage:**

Store at -20°C. Stable for one year after shipment.

**Storage Buffer:**

PBS with 0.02% sodium azide and 50% glycerol pH 7.3.

Aliquoting is unnecessary for -20°C storage

\*\*\* 20ul sizes contain 0.1% BSA

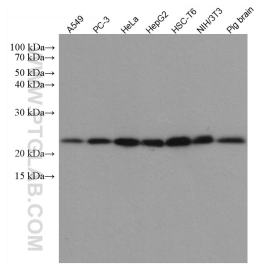
For technical support and original validation data for this product please contact:

T: 1 (888) 4PTGLAB (1-888-478-4522) (toll free in USA), or 1(312) 455-8498 (outside USA)

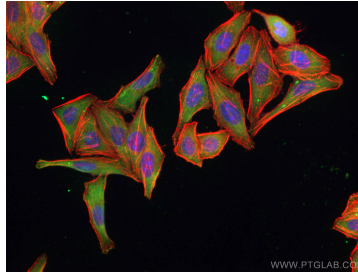
E: proteintech@ptglab.com  
W: ptglab.com

This product is exclusively available under Proteintech Group brand and is not available to purchase from any other manufacturer.

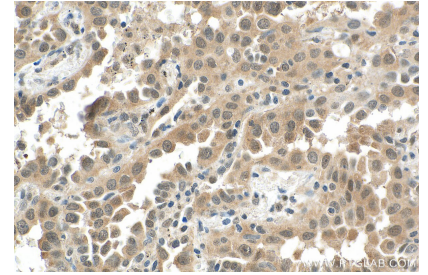
## Selected Validation Data



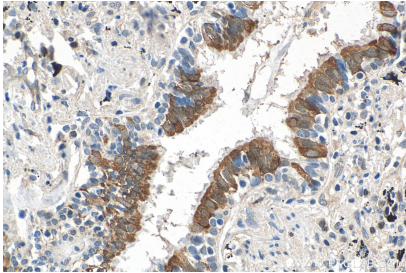
Various lysates were subjected to SDS PAGE followed by western blot with 67736-1-Ig (PTGES3 antibody) at dilution of 1:10000 incubated at room temperature for 1.5 hours.



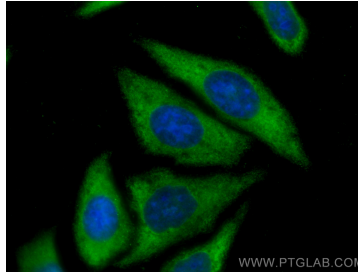
Immunofluorescent analysis of (-20°C Ethanol) fixed HepG2 cells using PTGES3 antibody (67736-1-Ig, Clone: 3C11D11 ) at dilution of 1:400 and CoraLite®488-Conjugated AffiniPure Goat Anti-Mouse IgG(H+L).



Immunohistochemical analysis of paraffin-embedded human lung cancer tissue slide using 67736-1-Ig (PTGES3 antibody) at dilution of 1:1000 (under 40x lens). Heat mediated antigen retrieval with Tris-EDTA buffer (pH 9.0).



Immunohistochemical analysis of paraffin-embedded human lung cancer tissue slide using 67736-1-Ig (PTGES3 antibody) at dilution of 1:1000 (under 40x lens). Heat mediated antigen retrieval with Tris-EDTA buffer (pH 9.0).



Immunofluorescent analysis of (-20°C Ethanol) fixed HepG2 cells using PTGES3 antibody (67736-1-Ig, Clone: 3C11D11 ) at dilution of 1:800 and CoraLite®488-Conjugated AffiniPure Goat Anti-Mouse IgG(H+L).