

For Research Use Only

RUVBL1 Monoclonal antibody

Catalog Number: 67750-1-Ig



Basic Information

Catalog Number: 67750-1-Ig	GenBank Accession Number: BC002993	Purification Method: Protein G purification
Size: 150ul , Concentration: 1000 ug/ml by Nanodrop;	GeneID (NCBI): 8607	CloneNo.: 1F2D9
Source: Mouse	UNIPROT ID: Q9Y265	Recommended Dilutions: WB 1:5000-1:50000
Isotype: IgG1	Full Name: RuvB-Like 1 (E. coli)	
Immunogen Catalog Number: AG16688	Calculated MW: 456 aa, 50 kDa	
	Observed MW: 50 kDa	

Applications

Tested Applications: WB, ELISA	Positive Controls: WB : U2OS cells, HeLa cells, HT-1080 cells, HCT 116 cells, K-562 cells, A549 cells, A431 cells
Species Specificity: Human, rat	

Background Information

RUVBL1 is a member of the AAA (ATPase associated with diverse cellular activities) family of proteins that is associated with several chromatin-remodelling complexes and has important roles in transcriptional regulation, the DNA damage response, telomerase activity, snoRNP assembly, cellular transformation and cancer metastasis[PMID: 21617703]. It consists of 456 amino acids (50 kDa) and interacts with TATA-binding protein (TBP), which is a central component for transcriptional regulation by forming complexes with various transcription regulators. RUVBL1 is a component of a large nuclear protein complex, possibly the RNA polymerase II holoenzyme. RUVBL1 is also highly homologous to RuvB proteins that function as a DNA helicase promote branch migration of the Holliday junction[PMID: 9588198].

Storage

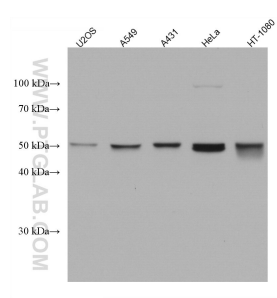
Storage:
Store at -20°C. Stable for one year after shipment.
Storage Buffer:
PBS with 0.02% sodium azide and 50% glycerol pH 7.3.
Aliquoting is unnecessary for -20°C storage

*** 20ul sizes contain 0.1% BSA

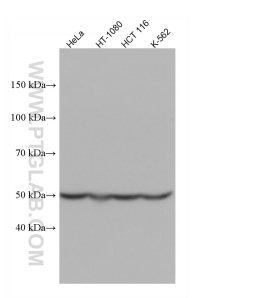
For technical support and original validation data for this product please contact:
T: 1 (888) 4PTGLAB (1-888-478-4522) (toll free in USA), or 1(312) 455-8498 (outside USA)
E: proteintech@ptglab.com
W: ptglab.com

This product is exclusively available under Proteintech Group brand and is not available to purchase from any other manufacturer.

Selected Validation Data



Various lysates were subjected to SDS PAGE followed by western blot with 67750-1-Ig (RUVBL1 antibody) at dilution of 1:10000 incubated at room temperature for 1.5 hours.



Various lysates were subjected to SDS PAGE followed by western blot with 67750-1-Ig (RUVBL1 antibody) at dilution of 1:2000 incubated at room temperature for 1.5 hours.