

For Research Use Only

PRKAR2A Monoclonal antibody

Catalog Number: 67751-1-Ig



Basic Information

Catalog Number: 67751-1-Ig	GenBank Accession Number: BC002763	Purification Method: Protein G purification
Size: 150ul , Concentration: 1000 µg/ml by Nanodrop;	GeneID (NCBI): 5576	CloneNo.: 1B2B3
Source: Mouse	Full Name: protein kinase, cAMP-dependent, regulatory, type II, alpha	Recommended Dilutions: WB 1:2000-1:10000 IHC 1:400-1:1600 IF 1:200-1:800
Isotype: IgG1	Calculated MW: 43 kDa	
Immunogen Catalog Number: AG29893	Observed MW: 50 kDa	

Applications

Tested Applications:

IF, IHC, WB, ELISA

Species Specificity:

Human, rat, mouse

Note-IHC: suggested antigen retrieval with TE buffer pH 9.0; (*) Alternatively, antigen retrieval may be performed with citrate buffer pH 6.0

Positive Controls:

WB : U2OS cells, NIH/3T3 cells, HSC-T6 cells, Jurkat cells, HepG2 cells, HeLa cells, LNCaP cells

IHC : human colon cancer tissue, mouse colon tissue

IF : HeLa cells,

Background Information

The effects of cAMP in most tissues and cell types are mainly modulated via protein kinase A, a heterotetrameric protein complex consisting of two regulatory and two catalytic subunits. The regulatory subunit of cAMP-dependent protein kinase (PRKAR2A) is one of the regulatory subunits and the gene is located on chromosome region 3p21.3-p21.2. The expression of PRKAR2A is tightly regulated during spermatogenesis, a significant increase in expression of this gene was also found in the human myometrium during pregnancy.

Storage

Storage:

Store at -20°C. Stable for one year after shipment.

Storage Buffer:

PBS with 0.02% sodium azide and 50% glycerol pH 7.3.

Aliquoting is unnecessary for -20°C storage

*** 20ul sizes contain 0.1% BSA

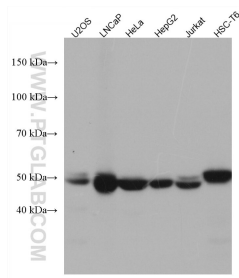
For technical support and original validation data for this product please contact:

T: 1 (888) 4PTGLAB (1-888-478-4522) (toll free in USA), or 1(312) 455-8498 (outside USA)

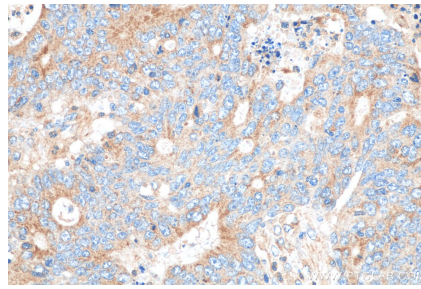
E: proteintech@ptglab.com
W: ptglab.com

This product is exclusively available under Proteintech Group brand and is not available to purchase from any other manufacturer.

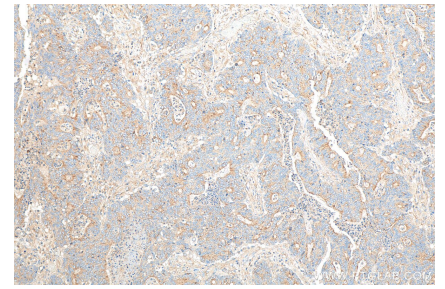
Selected Validation Data



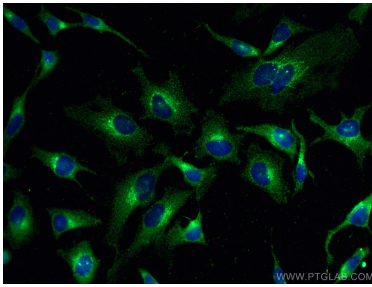
Various lysates were subjected to SDS PAGE followed by western blot with 67751-1-Ig (PRKAR2A antibody) at dilution of 1:5000 incubated at room temperature for 1.5 hours.



Immunohistochemical analysis of paraffin-embedded human colon cancer tissue slide using 67751-1-Ig (PRKAR2A antibody) at dilution of 1:800 (under 40x lens). Heat mediated antigen retrieval with Tris-EDTA buffer (pH 9.0).



Immunohistochemical analysis of paraffin-embedded human colon cancer tissue slide using 67751-1-Ig (PRKAR2A antibody) at dilution of 1:800 (under 10x lens). Heat mediated antigen retrieval with Tris-EDTA buffer (pH 9.0).



Immunofluorescent analysis of (-20°C Methanol) fixed HeLa cells using PRKAR2A antibody (67751-1-Ig, Clone: 1B2B3) at dilution of 1:400 and CoraLite®488-Conjugated AffiniPure Goat Anti-Mouse IgG(H+L).