

For Research Use Only

PRKAR2A Monoclonal antibody, PBS Only



Catalog Number: 67751-1-PBS

Basic Information

Catalog Number: 67751-1-PBS	GenBank Accession Number: BC002763	Purification Method: Protein G purification
Size: 100ug , Concentration: 1 mg/ml by Nanodrop;	GeneID (NCBI): 5576	CloneNo.: 1B2B3
Source: Mouse	UNIPROT ID: P13861	
Isotype: IgG1	Full Name: protein kinase, cAMP-dependent, regulatory, type II, alpha	
Immunogen Catalog Number: AG29893	Calculated MW: 43 kDa	
	Observed MW: 50 kDa	

Applications

Tested Applications:
WB, IF, IHC, Indirect ELISA

Species Specificity:
Human, rat, mouse

Background Information

The effects of cAMP in most tissues and cell types are mainly modulated via protein kinase A, a heterotetrameric protein complex consisting of two regulatory and two catalytic subunits. The regulatory subunit of cAMP-dependent protein kinase (PRKAR2A) is one of the regulatory subunits and the gene is located on chromosome region 3p21.3-p21.2. The expression of PRKAR2A is tightly regulated during spermatogenesis, a significant increase in expression of this gene was also found in the human myometrium during pregnancy.

Storage

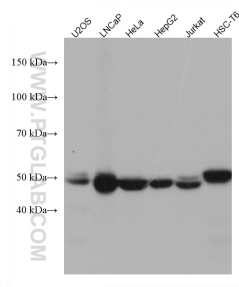
Storage:
Store at -80°C.

Storage Buffer:
PBS Only

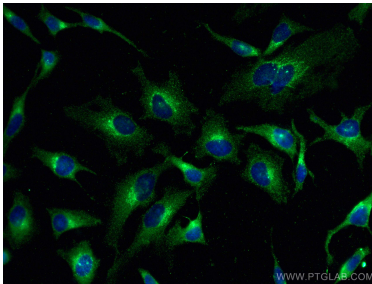
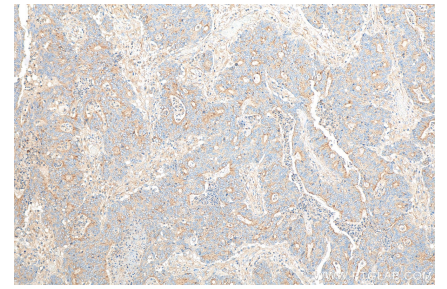
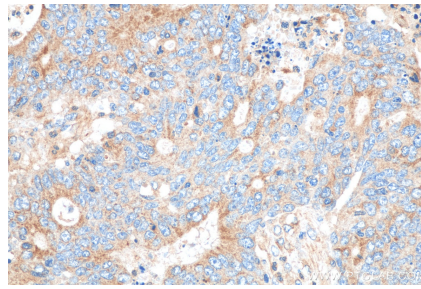
For technical support and original validation data for this product please contact:
T: 1 (888) 4PTGLAB (1-888-478-4522) (toll free in USA), or 1(312) 455-8498 (outside USA)
E: proteintech@ptglab.com
W: ptglab.com

This product is exclusively available under Proteintech Group brand and is not available to purchase from any other manufacturer.

Selected Validation Data



Various lysates were subjected to SDS PAGE followed by western blot with 67751-1-Ig (PRKAR2A antibody) at dilution of 1:5000 incubated at room temperature for 1.5 hours. This data was developed using the same antibody clone with 67751-1-PBS in a different storage buffer formulation.



Immunofluorescent analysis of (-20°C Methanol) fixed HeLa cells using PRKAR2A antibody (67751-1-Ig, Clone: 1B2B3) at dilution of 1:400 and CoraLite®488-Conjugated AffiniPure Goat Anti-Mouse IgG(H+L). This data was developed using the same antibody clone with 67751-1-PBS in a different storage buffer formulation.