

For Research Use Only

EED Monoclonal antibody, PBS Only

Catalog Number: 67756-1-PBS



Basic Information

Catalog Number: 67756-1-PBS	GenBank Accession Number: BC068995	Purification Method: Protein A purification
Size: 100ug , Concentration: 1 mg/ml by Nanodrop;	GeneID (NCBI): 8726	CloneNo.: 1D11D4
Source: Mouse	UNIPROT ID: O75530	
Isotype: IgG2b	Full Name: embryonic ectoderm development	
Immunogen Catalog Number: AG10369	Calculated MW: 466 aa, 53 kDa	
	Observed MW: 50/53/46 kDa.	

Applications

Tested Applications:
WB, IF, IHC, Indirect ELISA

Species Specificity:
Human, mouse, rat

Background Information

EED is a member of the Polycomb-group (PcG) family. PcG family members form multimeric protein complexes, which are involved in maintaining the transcriptional repressive state of genes over successive cell generations. This protein interacts with enhancer of zeste 2, the cytoplasmic tail of integrin beta7, immunodeficiency virus type 1 (HIV-1) MA protein, and histone deacetylase proteins. This protein mediates repression of gene activity through histone deacetylation, and may act as a specific regulator of integrin function. EED has three isoforms, with the molecular weight of isoforms 1/2/3: 50/53/46 kDa.

Storage

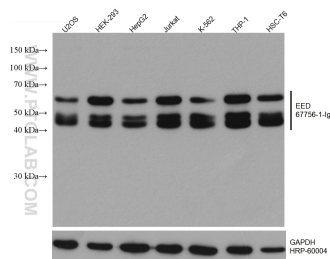
Storage:
Store at -80°C.

Storage Buffer:
PBS Only

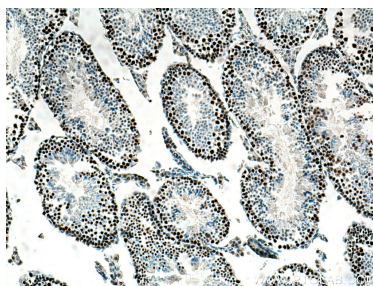
For technical support and original validation data for this product please contact:
T: 1 (888) 4PTGLAB (1-888-478-4522) (toll free in USA), or 1(312) 455-8498 (outside USA)
E: proteintech@ptglab.com
W: ptglab.com

This product is exclusively available under Proteintech Group brand and is not available to purchase from any other manufacturer.

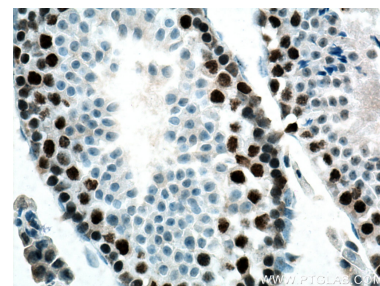
Selected Validation Data



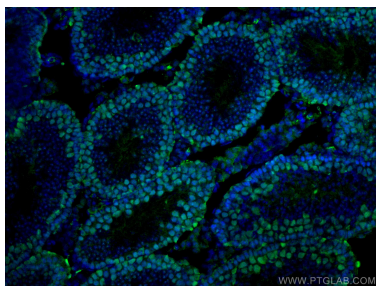
Various lysates were subjected to SDS PAGE followed by western blot with 67756-1-Ig (EED antibody) at dilution of 1:8000 incubated at room temperature for 1.5 hours. The membrane was stripped and reblotted with HRP-conjugated GAPDH Monoclonal antibody (HRP-60004) as loading control. This data was developed using the same antibody clone with 67756-1-PBS in a different storage buffer formulation.



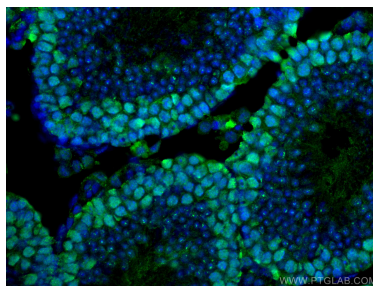
Immunohistochemical analysis of paraffin-embedded mouse testis tissue slide using 67756-1-Ig (EED antibody) at dilution of 1:1000 (under 10x lens). Heat mediated antigen retrieval with Tris-EDTA buffer (pH 9.0). This data was developed using the same antibody clone with 67756-1-PBS in a different storage buffer formulation.



Immunohistochemical analysis of paraffin-embedded mouse testis tissue slide using 67756-1-Ig (EED antibody) at dilution of 1:1000 (under 40x lens). Heat mediated antigen retrieval with Tris-EDTA buffer (pH 9.0). This data was developed using the same antibody clone with 67756-1-PBS in a different storage buffer formulation.



Immunofluorescent analysis of (4% PFA) fixed mouse testis tissue using EED antibody (67756-1-Ig, Clone: 1D11D4) at dilution of 1:800 and CoraLite®488-Conjugated AffiniPure Goat Anti-Mouse IgG(H+L). This data was developed using the same antibody clone with 67756-1-PBS in a different storage buffer formulation.



Immunofluorescent analysis of (4% PFA) fixed mouse testis tissue using EED antibody (67756-1-Ig, Clone: 1D11D4) at dilution of 1:800 and CoraLite®488-Conjugated AffiniPure Goat Anti-Mouse IgG(H+L). This data was developed using the same antibody clone with 67756-1-PBS in a different storage buffer formulation.