

For Research Use Only

# Human IgG lambda chain Monoclonal antibody, PBS Only

Catalog Number: 67762-1-PBS



## Basic Information

<b>Catalog Number:</b> 67762-1-PBS	<b>GenBank Accession Number:</b> BC007782	<b>Purification Method:</b> Protein A purification
<b>Size:</b> 100ug , Concentration: 1mg/ml by Nanodrop;	<b>GeneID (NCBI):</b> 3537	<b>CloneNo.:</b> 1D12B5
<b>Source:</b> Mouse	<b>Full Name:</b> immunoglobulin lambda constant 1 (Mcg marker)	
<b>Isotype:</b> IgG2a	<b>Calculated MW:</b> 233 aa, 25 kDa	
<b>Immunogen Catalog Number:</b> AG14783	<b>Observed MW:</b> ~25 kDa	

## Applications

**Tested Applications:**  
WB, IHC, IF-P, Indirect ELISA

**Species Specificity:**  
human

## Background Information

This antibody detects Lambda chain of human IgG.

## Storage

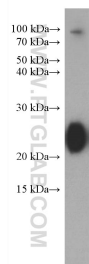
**Storage:**  
Store at -80°C.

**Storage Buffer:**  
PBS Only

For technical support and original validation data for this product please contact:  
T: 1 (888) 4PTGLAB (1-888-478-4522) (toll free in USA), or 1(312) 455-8498 (outside USA)  
E: [proteintech@ptglab.com](mailto:proteintech@ptglab.com)  
W: [ptglab.com](http://ptglab.com)

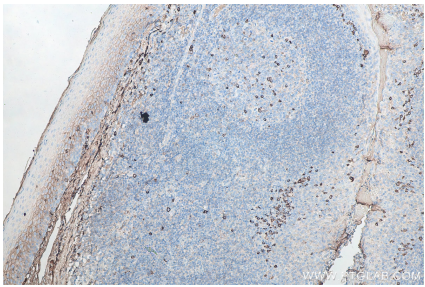
This product is exclusively available under Proteintech Group brand and is not available to purchase from any other manufacturer.

## Selected Validation Data

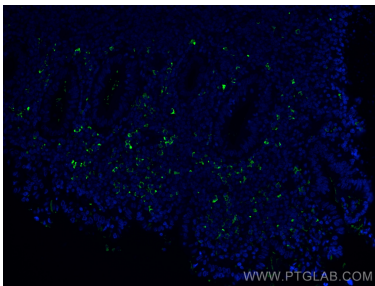


80 nL human plasma were subjected to SDS PAGE followed by western blot with 67762-1-Ig (Human IgG lambda chain antibody) at dilution of 1:5000 incubated at room temperature for 1.5 hours. This data was developed using the same antibody clone with 67762-1-PBS in a different storage buffer formulation.

Immunohistochemical analysis of paraffin-embedded human tonsillitis tissue slide using 67762-1-Ig (Human IgG lambda chain antibody) at dilution of 1:20000 (under 10x lens). Heat mediated antigen retrieval with Tris-EDTA buffer (pH 9.0). This data was developed using the same antibody clone with 67762-1-PBS in a different storage buffer formulation.



Immunohistochemical analysis of paraffin-embedded human tonsillitis tissue slide using 67762-1-Ig (Human IgG lambda chain antibody) at dilution of 1:10000 (under 10x lens). Heat mediated antigen retrieval with Tris-EDTA buffer (pH 9.0). This data was developed using the same antibody clone with 67762-1-PBS in a different storage buffer formulation.



Immunofluorescent analysis of (4% PFA) fixed human appendicitis tissue using Human IgG lambda chain antibody (67762-1-Ig, Clone: 1D12B5 ) at dilution of 1:400 and CoraLite®488-Conjugated AffiniPure Goat Anti-Mouse IgG(H+L). This data was developed using the same antibody clone with 67762-1-PBS in a different storage buffer formulation.