

For Research Use Only

# GALE Monoclonal antibody

Catalog Number: 67772-1-Ig



## Basic Information

Catalog Number:

67772-1-Ig

Size:

150ul , Concentration: 1000 ug/ml by Nanodrop;

Source:

Mouse

Isotype:

IgG2b

Immunogen Catalog Number:

AG6571

GenBank Accession Number:

BC050685

GeneID (NCBI):

2582

UNIPROT ID:

Q14376

Full Name:

UDP-galactose-4-epimerase

Calculated MW:

38 kDa

Observed MW:

38 kDa

Purification Method:

Protein A purification

CloneNo.:

3F2C2

Recommended Dilutions:

WB 1:5000-1:50000

## Applications

Tested Applications:

WB, ELISA

Species Specificity:

Human, Mouse, Rat, Pig, Rabbit

Positive Controls:

WB : U2OS cells, A375 cells, HEK-293T cells, HeLa cells, K-562 cells, 4T1 cells, rat liver tissue, pig liver tissue, rabbit liver tissue

## Background Information

GALE(Galactowaldenase) is also named as UDP-glucose 4-epimerase, UDP-galactose 4-epimerase, and belongs to the sugar epimerase family. UDP-galactose 4-epimerase catalyzes the interconversion of UDP-glucose and UDP-galactose during normal galactose metabolism. In humans, deficiencies in this enzyme lead to the complex disorder referred to as epimerase-deficiency galactosemia(PMID:10801319).It can exist as a homodimer(PMID:8931134).

## Storage

Storage:

Store at -20°C. Stable for one year after shipment.

Storage Buffer:

PBS with 0.02% sodium azide and 50% glycerol pH 7.3.

Aliquoting is unnecessary for -20°C storage

\*\*\* 20ul sizes contain 0.1% BSA

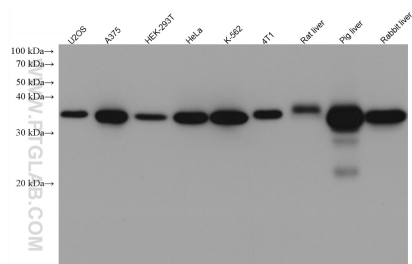
For technical support and original validation data for this product please contact:

T: 1 (888) 4PTGLAB (1-888-478-4522) (toll free in USA), or 1(312) 455-8498 (outside USA)

E: [proteintech@ptglab.com](mailto:proteintech@ptglab.com)  
W: [ptglab.com](http://ptglab.com)

This product is exclusively available under Proteintech Group brand and is not available to purchase from any other manufacturer.

## Selected Validation Data



Various lysates were subjected to SDS PAGE followed by western blot with 67772-1-Ig (GALE antibody) at dilution of 1:20000 incubated at room temperature for 1.5 hours.