

For Research Use Only

# GALE Monoclonal antibody

Catalog Number: 67772-1-Ig



## Basic Information

<b>Catalog Number:</b> 67772-1-Ig	<b>GenBank Accession Number:</b> BC050685	<b>Purification Method:</b> Protein A purification
<b>Size:</b> 150ul , Concentration: 1000 µg/ml by Nanodrop;	<b>GeneID (NCBI):</b> 2582	<b>CloneNo.:</b> 3F2C2
<b>Source:</b> Mouse	<b>Full Name:</b> UDP-galactose-4-epimerase	<b>Recommended Dilutions:</b> WB 1:5000-1:50000
<b>Isotype:</b> IgG2b	<b>Calculated MW:</b> 38 kDa	
<b>Immunogen Catalog Number:</b> AG6571	<b>Observed MW:</b> 38 kDa	

## Applications

<b>Tested Applications:</b> WB, ELISA	<b>Positive Controls:</b> WB : U2OS cells, A375 cells, HEK-293T cells, HeLa cells, K-562 cells, 4T1 cells, rat liver tissue, pig liver tissue, rabbit liver tissue
<b>Species Specificity:</b> Human, Mouse, Rat, Pig, Rabbit	

## Background Information

GALE (Galactowaldenase) is also named as UDP-glucose 4-epimerase, UDP-galactose 4-epimerase, and belongs to the sugar epimerase family. UDP-galactose 4-epimerase catalyzes the interconversion of UDP-glucose and UDP-galactose during normal galactose metabolism. In humans, deficiencies in this enzyme lead to the complex disorder referred to as epimerase-deficiency galactosemia (PMID:10801319). It can exist as a homodimer (PMID:8931134).

## Storage

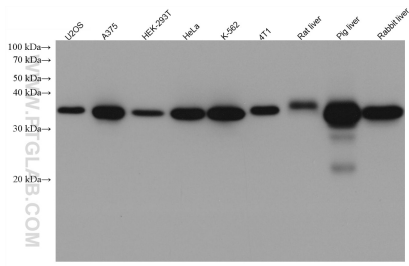
**Storage:**  
Store at -20°C. Stable for one year after shipment.  
**Storage Buffer:**  
PBS with 0.02% sodium azide and 50% glycerol pH 7.3.  
Aliquoting is unnecessary for -20°C storage

\*\*\* 20ul sizes contain 0.1% BSA

For technical support and original validation data for this product please contact:  
T: 1 (888) 4PTGLAB (1-888-478-4522) (toll free in USA), or 1(312) 455-8498 (outside USA) E: proteintech@ptglab.com W: ptglab.com

This product is exclusively available under Proteintech Group brand and is not available to purchase from any other manufacturer.

## Selected Validation Data



Various lysates were subjected to SDS PAGE followed by western blot with 67772-1-Ig (GALE antibody) at dilution of 1:20000 incubated at room temperature for 1.5 hours.