

For Research Use Only

KLHL25 Monoclonal antibody

Catalog Number: 67774-1-Ig



Basic Information

Catalog Number: 67774-1-Ig	GenBank Accession Number: BC028100	Purification Method: Protein G purification
Size: 150ul , Concentration: 1000 ug/ml by Nanodrop;	GeneID (NCBI): 64410	CloneNo.: 1D8B8
Source: Mouse	UNIPROT ID: Q9H0H3	Recommended Dilutions: WB 1:1000-1:6000 IHC 1:300-1:1200
Isotype: IgG1	Full Name: kelch-like 25 (Drosophila)	
Immunogen Catalog Number: AG27037	Observed MW: 66 kDa	

Applications

Tested Applications: WB, IHC, ELISA	Positive Controls:
Species Specificity: Human, Mouse	WB : HEK-293 cells, HT-29 cells, HepG2 cells, NCCIT cells, MOLT-4 cells, Raji cells, Ramos cells, Daudi cells
Note-IHC: suggested antigen retrieval with TE buffer pH 9.0; (*) Alternatively, antigen retrieval may be performed with citrate buffer pH 6.0	IHC : mouse testis tissue,

Storage

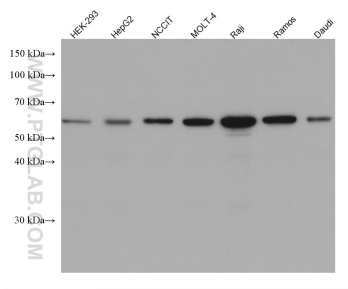
Storage: Store at -20°C.
Storage Buffer: PBS with 0.02% sodium azide and 50% glycerol pH 7.3.
Aliquoting is unnecessary for -20° C storage

*** 20ul sizes contain 0.1% BSA

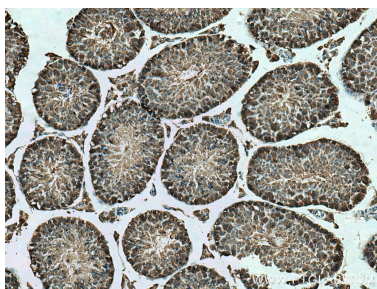
For technical support and original validation data for this product please contact:
T: 1 (888) 4PTGLAB (1-888-478-4522) (toll free in USA), or 1(312) 455-8498 (outside USA)
E: proteintech@ptglab.com
W: ptglab.com

This product is exclusively available under Proteintech Group brand and is not available to purchase from any other manufacturer.

Selected Validation Data



Various lysates were subjected to SDS PAGE followed by western blot with 67774-1-Ig (KLHL25 antibody) at dilution of 1:3000 incubated at room temperature for 1.5 hours.



Immunohistochemical analysis of paraffin-embedded mouse testis tissue slide using 67774-1-Ig (KLHL25 antibody) at dilution of 1:600 (under 10x lens). Heat mediated antigen retrieval with Tris-EDTA buffer (pH 9.0).