

For Research Use Only

# KLHL25 Monoclonal antibody

Catalog Number: 67774-1-Ig



## Basic Information

|   |   |   |
|---|---|---|
| <b>Catalog Number:</b><br>67774-1-Ig                              | <b>GenBank Accession Number:</b><br>BC028100    | <b>Purification Method:</b><br>Protein G purification                 |
| <b>Size:</b><br>150ul , Concentration: 1000 µg/ml by<br>Nanodrop; | <b>GeneID (NCBI):</b><br>64410                  | <b>CloneNo.:</b><br>1D8B8   |
| <b>Source:</b><br>Mouse   | <b>Full Name:</b><br>kelch-like 25 (Drosophila) | <b>Recommended Dilutions:</b><br>WB 1:1000-1:6000<br>IHC 1:300-1:1200 |
| <b>Isotype:</b><br>IgG1   | <b>Observed MW:</b><br>66 kDa                   |   |
| <b>Immunogen Catalog Number:</b><br>AG27037                       |   |   |

## Applications

### Tested Applications:

IHC, WB, ELISA

### Species Specificity:

Human, Mouse

**Note-IHC: suggested antigen retrieval with TE buffer pH 9.0; (\*) Alternatively, antigen retrieval may be performed with citrate buffer pH 6.0**

### Positive Controls:

**WB:** HEK-293 cells, HT-29 cells, HepG2 cells, NCCIT cells, MOLT-4 cells, Raji cells, Ramos cells, Daudi cells

**IHC:** mouse testis tissue,

## Background Information

### Storage

#### Storage:

Store at -20°C.

#### Storage Buffer:

PBS with 0.02% sodium azide and 50% glycerol pH 7.3.

Aliquoting is unnecessary for -20°C storage

**\*\*\* 20ul sizes contain 0.1% BSA**

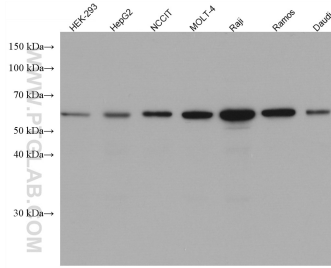
For technical support and original validation data for this product please contact:

T: 1 (888) 4PTGLAB (1-888-478-4522) (toll free in USA), or 1(312) 455-8498 (outside USA)

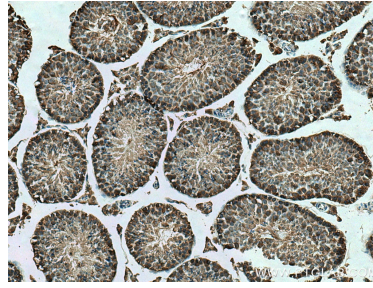
E: [proteintech@ptglab.com](mailto:proteintech@ptglab.com)  
W: [ptglab.com](http://ptglab.com)

**This product is exclusively available under Proteintech Group brand and is not available to purchase from any other manufacturer.**

## Selected Validation Data



Various lysates were subjected to SDS PAGE followed by western blot with 67774-1-Ig (KLHL25 antibody) at dilution of 1:3000 incubated at room temperature for 1.5 hours.



Immunohistochemical analysis of paraffin-embedded mouse testis tissue slide using 67774-1-Ig (KLHL25 antibody) at dilution of 1:600 (under 10x lens). Heat mediated antigen retrieval with Tris-EDTA buffer (pH 9.0).