

For Research Use Only

# CLIP-115/CLIP2 Monoclonal antibody

Catalog Number: 67776-1-Ig

Featured Product



## Basic Information

Catalog Number:

67776-1-Ig

Size:

150ul, Concentration: 1000 ug/ml by Nanodrop;

Source:

Mouse

Isotype:

IgG1

Immunogen Catalog Number:

AG18902

GenBank Accession Number:

BC150332

GeneID (NCBI):

7461

UNIPROT ID:

Q9UDT6

Full Name:

CAP-GLY domain containing linker protein 2

Calculated MW:

1011 aa, 112 kDa

Observed MW:

120 kDa

Purification Method:

Protein G purification

CloneNo.:

2E6B6

Recommended Dilutions:

WB 1:2000-1:20000

IF/ICC 1:200-1:800

## Applications

Tested Applications:

WB, IF/ICC, ELISA

Species Specificity:

Human, mouse, rat, pig, rabbit

Positive Controls:

WB : mouse cerebellum tissue, rabbit brain tissue, pig brain tissue, rat brain tissue, mouse brain tissue, pig cerebellum tissue, rat cerebellum tissue, A549 cells

IF/ICC : A549 cells,

## Background Information

CLIP-2/CLIP-115 is a cytoplasmic linker protein (CLIP) that links membranous organelles to microtubules. CLIP-115 is enriched in the axonal growth cone and it enables neuronal polarization by controlling the stabilization of microtubules. Mutation of CLIP-115 has been associated with Williams-Beuren syndrome.

## Storage

Storage:

Store at -20°C. Stable for one year after shipment.

Storage Buffer:

PBS with 0.02% sodium azide and 50% glycerol pH 7.3.

Aliquoting is unnecessary for -20°C storage

\*\*\* 20ul sizes contain 0.1% BSA

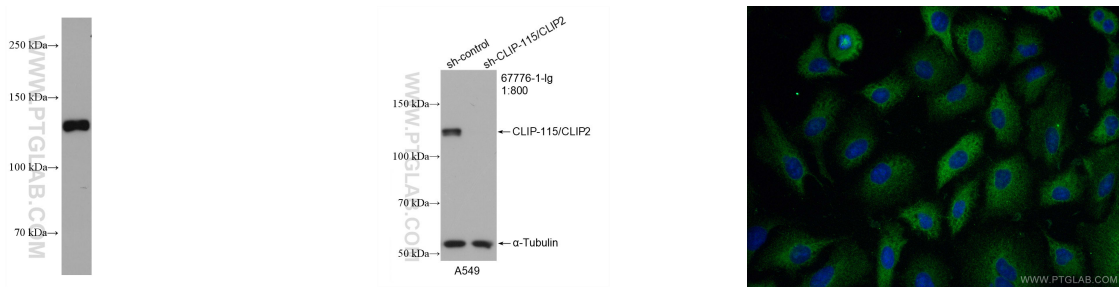
For technical support and original validation data for this product please contact:

T: 1 (888) 4PTGLAB (1-888-478-4522) (toll free in USA), or 1(312) 455-8498 (outside USA)

E: [proteintech@ptglab.com](mailto:proteintech@ptglab.com)  
W: [ptglab.com](http://ptglab.com)

This product is exclusively available under Proteintech Group brand and is not available to purchase from any other manufacturer.

Selected Validation Data



mouse cerebellum tissue were subjected to SDS PAGE followed by western blot with 67776-1-Ig (CLIP2 antibody) at dilution of 1:10000 incubated at room temperature for 1.5 hours.

WB result of CLIP-115/CLIP2 antibody (67776-1-Ig; 1:800; incubated at room temperature for 1.5 hours) with sh-Control and sh-CLIP-115/CLIP2 transfected A549 cells.

Immunofluorescent analysis of (-20°C Methanol) fixed A549 cells using CLIP-115/CLIP2 antibody (67776-1-Ig, Clone: 2E6B6 ) at dilution of 1:400 and CoraLite®488-Conjugated Goat Anti-Mouse IgG(H+L).