

For Research Use Only

SERBP1 Monoclonal antibody

Catalog Number: 67792-1-Ig



Basic Information

Catalog Number: 67792-1-Ig	GenBank Accession Number: BC008045	Purification Method: Protein G purification
Size: 150ul , Concentration: 500 ug/ml by Nanodrop;	GeneID (NCBI): 26135	CloneNo.: 1D4H1
Source: Mouse	UNIPROT ID: Q8NC51	Recommended Dilutions: WB 1:5000-1:50000 IP 0.5-4.0 ug for 1.0-3.0 mg of total protein lysate IHC 1:500-1:2000 IF-P 1:200-1:800
Isotype: IgG1	Full Name: SERPINE1 mRNA binding protein 1	
Immunogen Catalog Number: AG30202	Calculated MW: 45 kDa	
	Observed MW: 50 kDa	

Applications

Tested Applications:
WB, IHC, IF-P, IP, ELISA

Species Specificity:
Human, Mouse, Rat, pig, Canine

Note-IHC: suggested antigen retrieval with **TE buffer pH 9.0; (*) Alternatively, antigen retrieval may be performed with citrate buffer pH 6.0**

Positive Controls:

WB : LNCaP cells, MDCK cells, HSC-T6 cells, HeLa cells, HEK-293 cells, Jurkat cells, K-562 cells

IP : HeLa cells,

IHC : human liver cancer tissue,

IF-P : human liver cancer tissue,

Background Information

The plasminogen activator system (PA) plays an important role in invasion and metastasis of solid tumors. The PA Inhibitor type 1 (PAI-1) is the main physiologic regulator of plasminogen activation. PAI-RBP1 (PAI-1 mRNA Binding Protein 1, also named SERBP1), is an RNA-binding protein containing an RG-rich domain and an RGG box domain that might be methylated by protein arginine N-methyltransferases (PRMTs). SERBP1 was identified as an interacting partner of a Tudor domain containing protein TDRD3, and can localize to cytoplasmic stress granules (SGs).

Storage

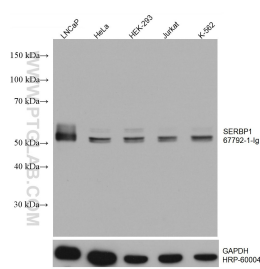
Storage:
Store at -20°C. Stable for one year after shipment.
Storage Buffer:
PBS with 0.02% sodium azide and 50% glycerol pH 7.3.
Aliquoting is unnecessary for -20°C storage

*** 20ul sizes contain 0.1% BSA

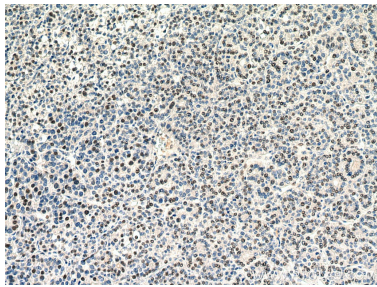
For technical support and original validation data for this product please contact:
T: 1 (888) 4PTGLAB (1-888-478-4522) (toll free in USA), or 1(312) 455-8498 (outside USA)
E: proteintech@ptglab.com
W: ptglab.com

This product is exclusively available under Proteintech Group brand and is not available to purchase from any other manufacturer.

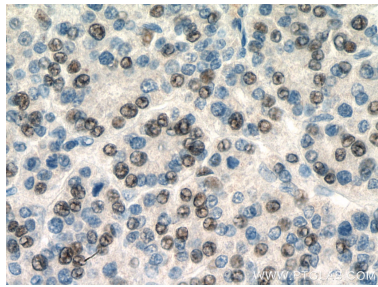
Selected Validation Data



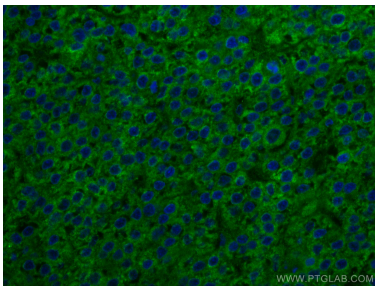
Various lysates were subjected to SDS PAGE followed by western blot with 67792-1-Ig (SERBP1 antibody) at dilution of 1:20000 incubated at room temperature for 1.5 hours. The membrane was stripped and reblotted with HRP-conjugated GAPDH Monoclonal antibody (HRP-60004) as loading control.



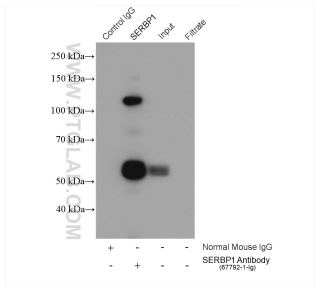
Immunohistochemical analysis of paraffin-embedded human liver cancer tissue slide using 67792-1-Ig (SERBP1 antibody) at dilution of 1:2000 (under 10x lens). Heat mediated antigen retrieval with Tris-EDTA buffer (pH 9.0).



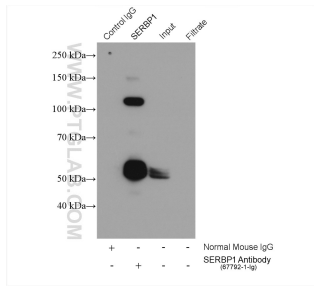
Immunohistochemical analysis of paraffin-embedded human liver cancer tissue slide using 67792-1-Ig (SERBP1 antibody) at dilution of 1:2000 (under 40x lens). Heat mediated antigen retrieval with Tris-EDTA buffer (pH 9.0).



Immunofluorescent analysis of (4% PFA) fixed human liver cancer tissue using SERBP1 antibody (67792-1-Ig, Clone: 1D4H1) at dilution of 1:400 and CoraLite®488-Conjugated AffiniPure Goat Anti-Mouse IgG(H+L). DAPI (blue).



IP result of anti-SERBP1 (IP:67792-1-Ig, 5ug; Detection:67792-1-Ig 1:2000) with HeLa cells lysate 1880 ug.



IP result of anti-SERBP1 (IP:67792-1-Ig, 5ug; Detection:67792-1-Ig 1:2000) with HeLa cells lysate 1880 ug.