

For Research Use Only

TWF1 Monoclonal antibody

Catalog Number: 67796-1-Ig



Basic Information

Catalog Number: 67796-1-Ig	GenBank Accession Number: BC022344	Purification Method: Protein A purification
Size: 150ul , Concentration: 1000 µg/ml by Nanodrop;	GeneID (NCBI): 5756	CloneNo.: 2F10F11
Source: Mouse	Full Name: twinfilin, actin-binding protein, homolog 1 (Drosophila)	Recommended Dilutions: WB 1:2000-1:20000
Isotype: IgG2a	Calculated MW: 368 aa, 42 kDa	
Immunogen Catalog Number: AG28630	Observed MW: 36-38 kDa	

Applications

Tested Applications: WB, ELISA	Positive Controls: WB : LNCaP cells, Jurkat cells, HEK-293 cells, HeLa cells, HepG2 cells
Species Specificity: Human	

Background Information

Twinfilin-1 (TWF1) is an actin-binding protein implicated in cell motility, invasion and migration. Its expression is linked to sensitivity to drugs and cancer progression. Overexpression of TWF1 has been reported in various cancers, including breast cancer and lung cancer.

Storage

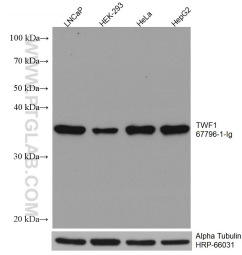
Storage:
Store at -20°C. Stable for one year after shipment.
Storage Buffer:
PBS with 0.02% sodium azide and 50% glycerol pH 7.3.
Aliquoting is unnecessary for -20°C storage

*** 20ul sizes contain 0.1% BSA

For technical support and original validation data for this product please contact:
T: 1 (888) 4PTGLAB (1-888-478-4522) (toll free in USA), or 1(312) 455-8498 (outside USA) E: proteintech@ptglab.com W: ptglab.com

This product is exclusively available under Proteintech Group brand and is not available to purchase from any other manufacturer.

Selected Validation Data



Various lysates were subjected to SDS PAGE followed by western blot with 67796-1-Ig (TWF1 antibody) at dilution of 1:10000 incubated at room temperature for 1.5 hours. The membrane was stripped and reblotted with HRP-conjugated Alpha Tubulin Monoclonal antibody (HRP-66031) as loading control.