

For Research Use Only

HK3 Monoclonal antibody

Catalog Number: 67803-1-Ig



Basic Information

Catalog Number: 67803-1-Ig	GenBank Accession Number: BC028129	Purification Method: Protein A purification
Size: 150ul , Concentration: 1000 µg/ml by Nanodrop;	GeneID (NCBI): 3101	CloneNo.: 3H3C7
Source: Mouse	UNIPROT ID: P52790	Recommended Dilutions: WB 1:5000-1:50000 IHC 1:500-1:2000 IF 1:500-1:2000
Isotype: IgG1	Full Name: hexokinase 3 (white cell)	
Immunogen Catalog Number: AG30798	Calculated MW: 923 aa, 99 kDa	
	Observed MW: 99 kDa	

Applications

Tested Applications:

WB, IF, IHC, ELISA

Species Specificity:

Human, Mouse, Rat, Pig

Note-IHC: suggested antigen retrieval with TE buffer pH 9.0; (*) Alternatively, antigen retrieval may be performed with citrate buffer pH 6.0

Positive Controls:

WB : Raji cells, Ramos cells, RAW 264.7 cells, human saliva, rat spleen tissue

IHC : human lung cancer tissue,

IF : HeLa cells,

Storage

Storage:

Store at -20°C. Stable for one year after shipment.

Storage Buffer:

PBS with 0.02% sodium azide and 50% glycerol pH 7.3.

Aliquoting is unnecessary for -20°C storage

*** 20ul sizes contain 0.1% BSA

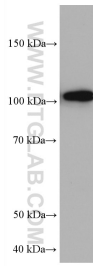
For technical support and original validation data for this product please contact:

T: 1 (888) 4PTGLAB (1-888-478-4522) (toll free in USA), or 1(312) 455-8498 (outside USA)

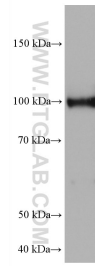
E: proteintech@ptglab.com
W: ptglab.com

This product is exclusively available under Proteintech Group brand and is not available to purchase from any other manufacturer.

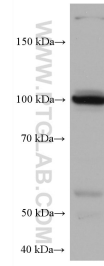
Selected Validation Data



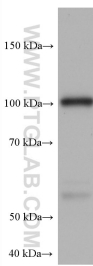
human saliva were subjected to SDS PAGE followed by western blot with 67803-1-Ig (HK3 antibody) at dilution of 1:10000 incubated at room temperature for 1.5 hours.



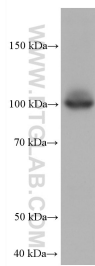
rat spleen tissue were subjected to SDS PAGE followed by western blot with 67803-1-Ig (HK3 antibody) at dilution of 1:10000 incubated at room temperature for 1.5 hours.



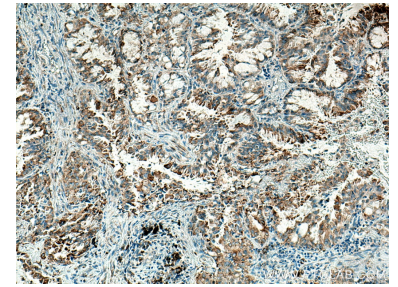
Raji cells were subjected to SDS PAGE followed by western blot with 67803-1-Ig (HK3 antibody) at dilution of 1:10000 incubated at room temperature for 1.5 hours.



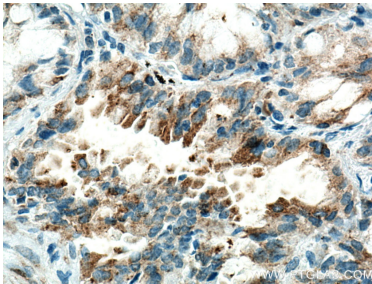
Ramos cells were subjected to SDS PAGE followed by western blot with 67803-1-Ig (HK3 antibody) at dilution of 1:10000 incubated at room temperature for 1.5 hours.



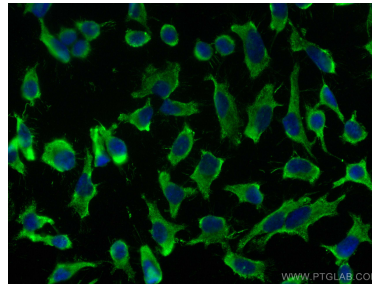
RAW 264.7 cells were subjected to SDS PAGE followed by western blot with 67803-1-Ig (HK3 antibody) at dilution of 1:10000 incubated at room temperature for 1.5 hours.



Immunohistochemical analysis of paraffin-embedded human lung cancer tissue slide using 67803-1-Ig (HK3 antibody) at dilution of 1:1000 (under 10x lens). Heat mediated antigen retrieval with Tris-EDTA buffer (pH 9.0).



Immunohistochemical analysis of paraffin-embedded human lung cancer tissue slide using 67803-1-Ig (HK3 antibody) at dilution of 1:1000 (under 40x lens). Heat mediated antigen retrieval with Tris-EDTA buffer (pH 9.0).



Immunofluorescent analysis of (-20°C Methanol) fixed HeLa cells using HK3 antibody (67803-1-Ig, Clone: 3H3C7) at dilution of 1:1000 and CoraLite®488-Conjugated AffiniPure Goat Anti-Mouse IgG(H+L).