

For Research Use Only

# WWP1 Monoclonal antibody

Catalog Number: 67804-1-Ig

Featured Product

1 Publications



## Basic Information

Catalog Number:

67804-1-Ig

Size:

150ul, Concentration: 1000 ug/ml by Nanodrop;

Source:

Mouse

Isotype:

IgG2b

Immunogen Catalog Number:

AG30171

GenBank Accession Number:

BC036065

GeneID (NCBI):

11059

UNIPROT ID:

Q9H0M0

Full Name:

WW domain containing E3 ubiquitin protein ligase 1

Calculated MW:

922 aa, 105 kDa

Observed MW:

95-105 kDa

Purification Method:

Protein A purification

CloneNo.:

2G8G11

Recommended Dilutions:

WB 1:5000-1:50000

## Applications

Tested Applications:

WB, ELISA

Cited Applications:

WB

Species Specificity:

human

Cited Species:

human, mouse

Positive Controls:

WB : MCF-7 cells, HaCaT cells, HeLa cells, LNCaP cells, Jurkat cells

## Background Information

WW domain-containing E3 ubiquitin protein ligase 1 (WWP1) is a multifunction protein containing an N-terminal C2 domain, four tandem WW domains for substrate binding, and a C-terminal catalytic HECT domain for ubiquitin transferring. It is also named as AIP5, Tiul1. WWP1 regulates a variety of cellular biological processes including protein trafficking and degradation, signaling, transcription, and viral budding. WWP1 has been implicated in several diseases, such as cancers, infectious diseases, neurological diseases, and aging (PMID:22051607). It has 6 isoforms produced by alternative splicing.

## Notable Publications

Author	Pubmed ID	Journal	Application
Jiaojiao Xu	40075587	Cancers (Basel)	WB

## Storage

Storage:

Store at -20°C. Stable for one year after shipment.

Storage Buffer:

PBS with 0.02% sodium azide and 50% glycerol, pH7.3

Aliquoting is unnecessary for -20°C storage

\*\*\* 20ul sizes contain 0.1% BSA

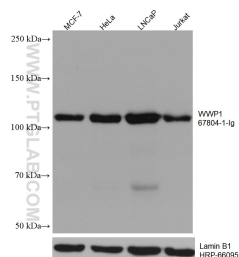
For technical support and original validation data for this product please contact:

T: 1 (888) 4PTGLAB (1-888-478-4522) (toll free in USA), or 1(312) 455-8498 (outside USA)

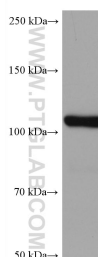
E: [proteintech@ptglab.com](mailto:proteintech@ptglab.com)  
W: [ptglab.com](http://ptglab.com)

This product is exclusively available under Proteintech Group brand and is not available to purchase from any other manufacturer.

## Selected Validation Data



Various lysates were subjected to SDS PAGE followed by western blot with 67804-1-Ig (WWP1 antibody) at dilution of 1:10000 incubated at room temperature for 1.5 hours. The membrane was stripped and reblotted with HRP-conjugated Lamin B1 Monoclonal antibody (HRP-66095) as loading control.



HaCaT cells were subjected to SDS PAGE followed by western blot with 67804-1-Ig (WWP1 antibody) at dilution of 1:10000 incubated at room temperature for 1.5 hours.