

For Research Use Only

PSMD13 Monoclonal antibody

Catalog Number: 67807-1-Ig



Basic Information

Catalog Number: 67807-1-Ig	GenBank Accession Number: BC001100	Purification Method: Protein G purification
Size: 150ul, Concentration: 1000 ug/ml by Nanodrop;	GeneID (NCBI): 5719	CloneNo.: 2G10G6
Source: Mouse	UNIPROT ID: Q9UNM6	Recommended Dilutions: WB 1:5000-1:50000 IHC 1:2000-1:8000 IF/ICC 1:400-1:1600
Isotype: IgG1	Full Name: proteasome (prosome, macropain) 26S subunit, non-ATPase, 13	
Immunogen Catalog Number: AG7857	Calculated MW: 43 kDa	
	Observed MW: 43 kDa	

Applications

Tested Applications: WB, IHC, IF/ICC, ELISA	Positive Controls:
Species Specificity: Human, mouse, rat, rabbit, pig, chicken	WB : HCT 116 cells, SMMC-7721 cells, HepG2 cells, HuH-7 cells, mouse liver tissue, NIH/3T3 cells, HSC-T6 cells, K-562 cells, Jurkat cells, HEK-293 cells, HeLa cells, L02 cells, A549 cells, Calu-3 cells, rat liver tissue, rabbit liver tissue, pig liver, chicken liver
Note-IHC: suggested antigen retrieval with TE buffer pH 9.0; (*) Alternatively, antigen retrieval may be performed with citrate buffer pH 6.0	IHC : human pancreas cancer tissue, human lung cancer tissue
	IF/ICC : HepG2 cells,

Storage

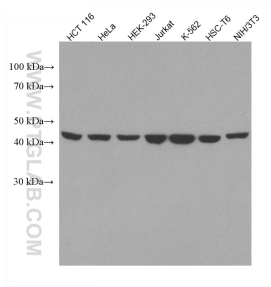
Storage:
Store at -20°C. Stable for one year after shipment.
Storage Buffer:
PBS with 0.02% sodium azide and 50% glycerol pH 7.3.
Aliquoting is unnecessary for -20°C storage

*** 20ul sizes contain 0.1% BSA

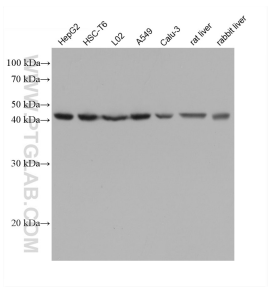
For technical support and original validation data for this product please contact:
T: 1 (888) 4PTGLAB (1-888-478-4522) (toll free in USA), or 1(312) 455-8498 (outside USA)
E: proteintech@ptglab.com
W: ptglab.com

This product is exclusively available under Proteintech Group brand and is not available to purchase from any other manufacturer.

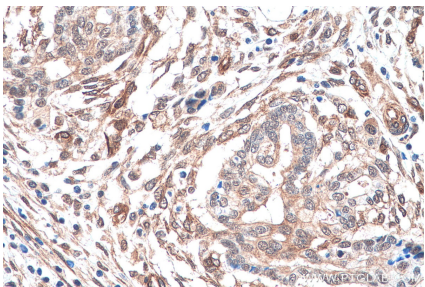
Selected Validation Data



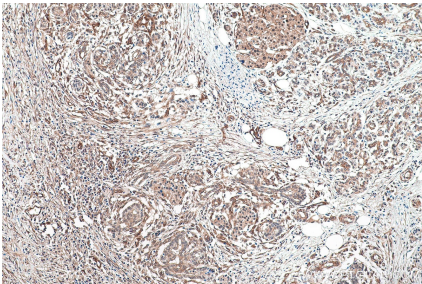
Various lysates were subjected to SDS PAGE followed by western blot with 67807-1-Ig (PSMD13 antibody) at dilution of 1:10000 incubated at room temperature for 1.5 hours.



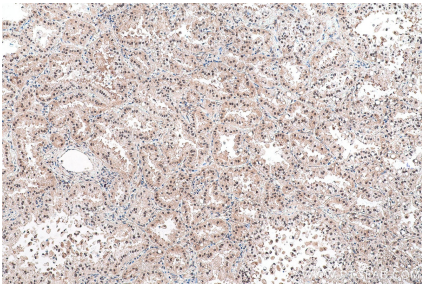
Various lysates were subjected to SDS PAGE followed by western blot with 67807-1-Ig (PSMD13 antibody) at dilution of 1:20000 incubated at room temperature for 1.5 hours.



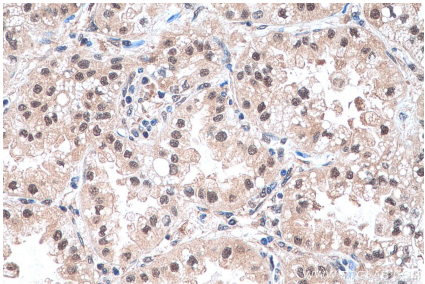
Immunohistochemical analysis of paraffin-embedded human pancreas cancer tissue slide using 67807-1-Ig (PSMD13 antibody) at dilution of 1:4000 (under 40x lens). Heat mediated antigen retrieval with Tris-EDTA buffer (pH 9.0).



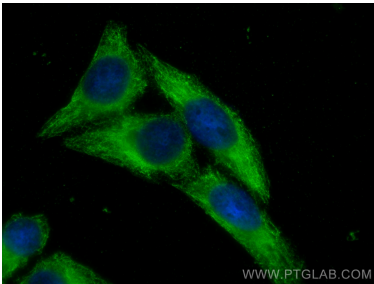
Immunohistochemical analysis of paraffin-embedded human pancreas cancer tissue slide using 67807-1-Ig (PSMD13 antibody) at dilution of 1:4000 (under 10x lens). Heat mediated antigen retrieval with Tris-EDTA buffer (pH 9.0).



Immunohistochemical analysis of paraffin-embedded human lung cancer tissue slide using 67807-1-Ig (PSMD13 antibody) at dilution of 1:4000 (under 10x lens). Heat mediated antigen retrieval with Tris-EDTA buffer (pH 9.0).



Immunohistochemical analysis of paraffin-embedded human lung cancer tissue slide using 67807-1-Ig (PSMD13 antibody) at dilution of 1:4000 (under 40x lens). Heat mediated antigen retrieval with Tris-EDTA buffer (pH 9.0).



Immunofluorescent analysis of (-20°C Ethanol) fixed HepG2 cells using PSMD13 antibody (67807-1-Ig, Clone: 2G10G6) at dilution of 1:800 and CoraLite®488-Conjugated AffiniPure Goat Anti-Mouse IgG(H+L).