

For Research Use Only

PPP2CA Monoclonal antibody

Catalog Number: 67809-1-Ig **2 Publications**



Basic Information

Catalog Number: 67809-1-Ig	GenBank Accession Number: BC031696	Purification Method: Protein G purification
Size: 150ul , Concentration: 1000 ug/ml by Nanodrop and 541 ug/ml by Bradford method using BSA as the standard;	GeneID (NCBI): 5515	CloneNo.: 3A6H5
Source: Mouse	UNIPROT ID: P67775	Recommended Dilutions: WB 1:1000-1:4000 IHC 1:50-1:500
Isotype: IgG1	Full Name: protein phosphatase 2 (formerly 2A), catalytic subunit, alpha isoform	
Immunogen Catalog Number: AG4294	Calculated MW: 309 aa, 36 kDa	
	Observed MW: 33 kDa	

Applications

Tested Applications: WB, IHC, ELISA	Positive Controls:
Cited Applications: WB, ColP	WB : A549 cells, U2OS cells, HeLa cells, HEK-293 cells, Jurkat cells, HSC-T6 cells
Species Specificity: Human, rat	IHC : human liver tissue,
Cited Species: human	
Note-IHC: suggested antigen retrieval with TE buffer pH 9.0; (*) Alternatively, antigen retrieval may be performed with citrate buffer pH 6.0	

Background Information

PPP2CA, also named as RP-C and PP2A-alpha, belongs to the PPP phosphatase family and PP-1 subfamily. PP2A can modulate the activity of phosphorylase B kinase casein kinase 2, mitogen-stimulated S6 kinase, and MAP-2 kinase. PP2A activity was modestly decreased in AML patients harboring C-KIT/WT. PP2A is a target for C-KIT/TKD and implicated the potential efficacy of therapies targeting PP2A in such AML in future.

Notable Publications

Author	Pubmed ID	Journal	Application
Mengmeng Zhang	39033992	Cell Signal	WB, ColP
Yue Li	37210725	Cell Rep	WB

Storage

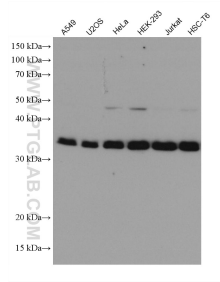
Storage:
Store at -20°C. Stable for one year after shipment.
Storage Buffer:
PBS with 0.1% sodium azide and 50% glycerol pH 7.3.
Aliquoting is unnecessary for -20°C storage

*** 20ul sizes contain 0.1% BSA

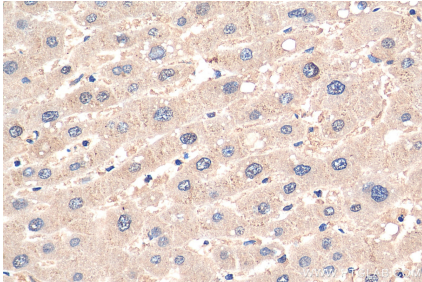
For technical support and original validation data for this product please contact:
T: 1 (888) 4PTGLAB (1-888-478-4522) (toll free in USA), or 1(312) 455-8498 (outside USA)
E: proteintech@ptglab.com
W: ptglab.com

This product is exclusively available under Proteintech Group brand and is not available to purchase from any other manufacturer.

Selected Validation Data



Various lysates were subjected to SDS PAGE followed by western blot with 67809-1-Ig (PPP2CA antibody) at dilution of 1:2000 incubated at room temperature for 1.5 hours.



Immunohistochemical analysis of paraffin-embedded human liver tissue slide using 67809-1-Ig (PPP2CA antibody) at dilution of 1:200 (under 40x lens). Heat mediated antigen retrieval with Tris-EDTA buffer (pH 9.0).