

For Research Use Only

LARP1 Monoclonal antibody

Catalog Number: 67810-1-Ig



Basic Information

Catalog Number:	67810-1-Ig	GenBank Accession Number:	BC033856	Purification Method:	Protein G purification
Size:	150ul , Concentration: 1000 ug/ml by Nanodrop;	GeneID (NCBI):	23367	CloneNo.:	2E9F2
Source:	Mouse	UNIPROT ID:	Q6PKG0	Recommended Dilutions:	WB 1:2000-1:10000 IHC 1:500-1:2000 IF/ICC 1:200-1:800
Isotype:	IgG1	Full Name:	La ribonucleoprotein domain family, member 1		
Immunogen Catalog Number:	AG29993	Calculated MW:	1096 aa, 124 kDa		
		Observed MW:	140-150 kDa		

Applications

Tested Applications:
WB, IHC, IF/ICC, ELISA

Species Specificity:
human, mouse, rat

Note-IHC: suggested antigen retrieval with TE buffer pH 9.0; (*) Alternatively, antigen retrieval may be performed with citrate buffer pH 6.0

Positive Controls:

WB : HCT 116 cells, HSC-T6 cells, NIH/3T3 cells, HeLa cells, HepG2 cells, Jurkat cells, K-562 cells

IHC : human ovary tumor tissue,

IF/ICC : HepG2 cells,

Storage

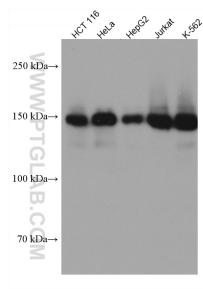
Storage:
Store at -20°C. Stable for one year after shipment.
Storage Buffer:
PBS with 0.02% sodium azide and 50% glycerol, pH7.3
Aliquoting is unnecessary for -20°C storage

*** 20ul sizes contain 0.1% BSA

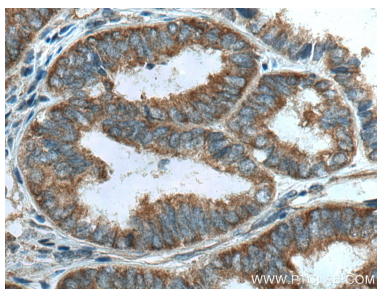
For technical support and original validation data for this product please contact:
T: 1 (888) 4PTGLAB (1-888-478-4522) (toll free in USA), or 1(312) 455-8498 (outside USA)
E: proteintech@ptglab.com
W: ptglab.com

This product is exclusively available under Proteintech Group brand and is not available to purchase from any other manufacturer.

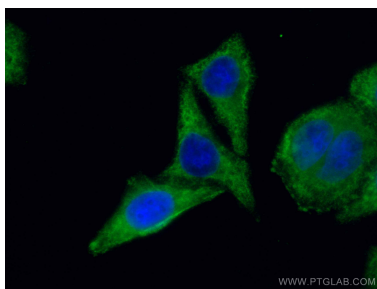
Selected Validation Data



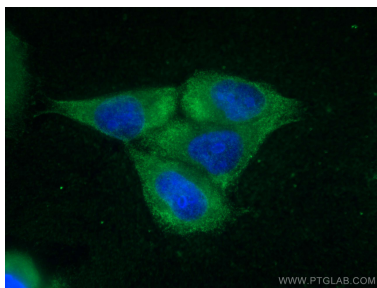
Various lysates were subjected to SDS PAGE followed by western blot with 67810-1-Ig (LARP1 antibody) at dilution of 1:5000 incubated at room temperature for 1.5 hours.



Immunohistochemical analysis of paraffin-embedded human ovary tumor tissue slide using 67810-1-Ig (LARP1 antibody) at dilution of 1:1000 (under 40x lens). Heat mediated antigen retrieval with Tris-EDTA buffer (pH 9.0).



Immunofluorescent analysis of (-20°C Ethanol) fixed HepG2 cells using LARP1 antibody (67810-1-Ig, Clone: 2E9F2) at dilution of 1:400 and CoraLite®488-Conjugated AffiniPure Goat Anti-Mouse IgG(H+L). Blue (DAPI).



Immunofluorescent analysis of (-20°C Ethanol) fixed HepG2 cells using LARP1 antibody (67810-1-Ig, Clone: 2E9F2) at dilution of 1:800 and CoraLite®488-Conjugated AffiniPure Goat Anti-Mouse IgG(H+L).