

For Research Use Only

# LARP1 Monoclonal antibody

Catalog Number: 67810-1-Ig



## Basic Information

Catalog Number:	67810-1-Ig	GenBank Accession Number:	BC033856	Purification Method:	Protein G purification
Size:	150ul , Concentration: 1000 ug/ml by Nanodrop;	GeneID (NCBI):	23367	CloneNo.:	2E9F2
Source:	Mouse	UNIPROT ID:	Q6PKG0	Recommended Dilutions:	WB 1:2000-1:10000 IHC 1:500-1:2000 IF/ICC 1:200-1:800
Isotype:	IgG1	Full Name:	La ribonucleoprotein domain family, member 1		
Immunogen Catalog Number:	AG29993	Calculated MW:	1096 aa, 124 kDa		
		Observed MW:	140-150 kDa		

## Applications

Tested Applications:  
WB, IHC, IF/ICC, ELISA

Species Specificity:  
Human, mouse, rat

**Note-IHC: suggested antigen retrieval with TE buffer pH 9.0; (\*) Alternatively, antigen retrieval may be performed with citrate buffer pH 6.0**

Positive Controls:

WB : HCT 116 cells, HSC-T6 cells, NIH/3T3 cells, HeLa cells, HepG2 cells, Jurkat cells, K-562 cells

IHC : human ovary tumor tissue,

IF/ICC : HepG2 cells,

## Storage

Storage:

Store at -20°C. Stable for one year after shipment.

Storage Buffer:

PBS with 0.02% sodium azide and 50% glycerol pH 7.3.

Aliquoting is unnecessary for -20°C storage

\*\*\* 20ul sizes contain 0.1% BSA

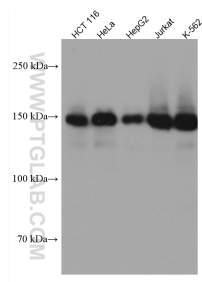
For technical support and original validation data for this product please contact:

T: 1 (888) 4PTGLAB (1-888-478-4522) (toll free in USA), or 1(312) 455-8498 (outside USA)

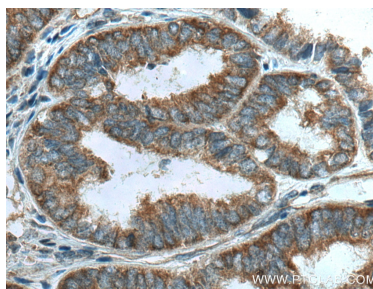
E: [proteintech@ptglab.com](mailto:proteintech@ptglab.com)  
W: [ptglab.com](http://ptglab.com)

This product is exclusively available under Proteintech Group brand and is not available to purchase from any other manufacturer.

## Selected Validation Data



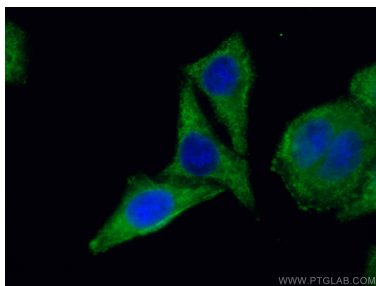
Various lysates were subjected to SDS PAGE followed by western blot with 67810-1-Ig (LARP1 antibody) at dilution of 1:5000 incubated at room temperature for 1.5 hours.



Immunohistochemical analysis of paraffin-embedded human ovary tumor tissue slide using 67810-1-Ig (LARP1 antibody) at dilution of 1:1000 (under 40x lens). Heat mediated antigen retrieval with Tris-EDTA buffer (pH 9.0).



Immunofluorescent analysis of (-20°C Ethanol) fixed HepG2 cells using LARP1 antibody (67810-1-Ig, Clone: 2E9F2) at dilution of 1:800 and CoraLite®488-Conjugated AffiniPure Goat Anti-Mouse IgG(H+L).



Immunofluorescent analysis of (-20°C Ethanol) fixed HepG2 cells using LARP1 antibody (67810-1-Ig, Clone: 2E9F2) at dilution of 1:400 and CoraLite®488-Conjugated AffiniPure Goat Anti-Mouse IgG(H+L). Blue (DAPI).