

For Research Use Only

TALDO1 Monoclonal antibody

Catalog Number: 67816-1-Ig

Featured Product

2 Publications



Basic Information

Catalog Number:

67816-1-Ig

Size:

150ul, Concentration: 1000 ug/ml by Nanodrop and 472 ug/ml by Bradford method using BSA as the standard;

Source:

Mouse

Isotype:

IgG1

Immunogen Catalog Number:

AG3031

GenBank Accession Number:

BC009680

GeneID (NCBI):

6888

UNIPROT ID:

P37837

Full Name:

transaldolase 1

Calculated MW:

337 aa, 38 kDa

Observed MW:

38 kDa

Purification Method:

Protein G purification

CloneNo.:

2F5G3

Recommended Dilutions:

WB 1:5000-1:50000

IHC 1:500-1:2000

Applications

Tested Applications:

WB, IHC, ELISA

Cited Applications:

WB, IHC

Species Specificity:

Human

Cited Species:

human

Note-IHC: suggested antigen retrieval with TE buffer pH 9.0; (*) Alternatively, antigen retrieval may be performed with citrate buffer pH 6.0

Positive Controls:

WB : LNCaP cells, HEK-293 cells, HeLa cells, Jurkat cells, K-562 cells

IHC : human oesophagus cancer tissue, human prostate cancer tissue

Background Information

TALDO1 belongs to the transaldolase family which contributes to the generation of NADPH in the nonoxidative phase of the pentose phosphate pathway (PPP). Defects in TALDO1 are the cause of transaldolase 1 deficiency which results in telangiectases of the skin, hepatosplenomegaly, and enlarged clitoris.

Notable Publications

Author	Pubmed ID	Journal	Application
Semira R. Ortiz	36276829	Front Nutr	WB
Ganfei Xu	38900939	Cancer Res	WB, IHC

Storage

Storage:

Store at -20°C. Stable for one year after shipment.

Storage Buffer:

PBS with 0.02% sodium azide and 50% glycerol pH 7.3.

Aliquoting is unnecessary for -20°C storage

*** 20ul sizes contain 0.1% BSA

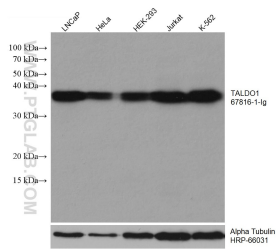
For technical support and original validation data for this product please contact:

T: 1 (888) 4PTGLAB (1-888-478-4522) (toll free in USA), or 1(312) 455-8498 (outside USA)

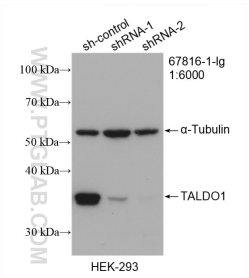
E: proteintech@ptglab.com
W: ptglab.com

This product is exclusively available under Proteintech Group brand and is not available to purchase from any other manufacturer.

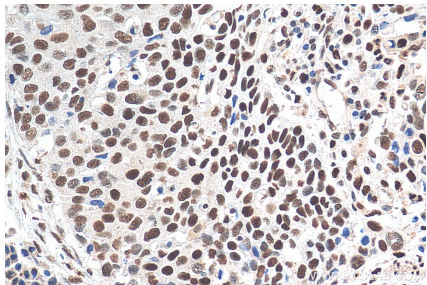
Selected Validation Data



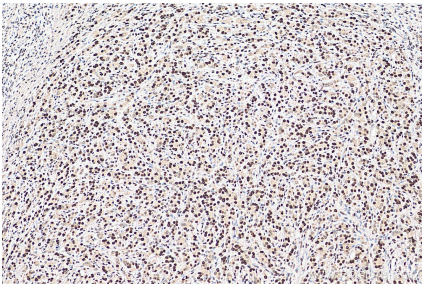
Various lysates were subjected to SDS PAGE followed by western blot with 67816-1-Ig (TALDO1 antibody) at dilution of 1:10000 incubated at room temperature for 1.5 hours. The membrane was stripped and reblotted with HRP-conjugated Alpha Tubulin Monoclonal antibody (HRP-66031) as loading control.



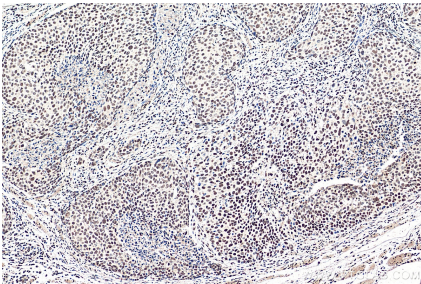
WB result of TALDO1 antibody (67816-1-Ig; 1:6000; incubated at room temperature for 1.5 hours) with sh-Control and sh-TALDO1 transfected HEK-293 cells.



Immunohistochemical analysis of paraffin-embedded human oesophagus cancer tissue slide using 67816-1-Ig (TALDO1 antibody) at dilution of 1:1000 (under 40x lens). Heat mediated antigen retrieval with Tris-EDTA buffer (pH 9.0).



Immunohistochemical analysis of paraffin-embedded human prostate cancer tissue slide using 67816-1-Ig (TALDO1 antibody) at dilution of 1:1000 (under 10x lens). Heat mediated antigen retrieval with Tris-EDTA buffer (pH 9.0).



Immunohistochemical analysis of paraffin-embedded human oesophagus cancer tissue slide using 67816-1-Ig (TALDO1 antibody) at dilution of 1:1000 (under 10x lens). Heat mediated antigen retrieval with Tris-EDTA buffer (pH 9.0).