

For Research Use Only

PDE6A Monoclonal antibody

Catalog Number: 67832-1-Ig



Basic Information

Catalog Number:

67832-1-Ig

Size:

150ul, Concentration: 1000 ug/ml by Nanodrop;

Source:

Mouse

Isotype:

IgG1

Immunogen Catalog Number:

AG16741

GenBank Accession Number:

BC035909

GeneID (NCBI):

5145

UNIPROT ID:

P16499

Full Name:

phosphodiesterase 6A, cGMP-specific, rod, alpha

Calculated MW:

860 aa, 100 kDa

Observed MW:

100 kDa

Purification Method:

Protein G purification

CloneNo.:

1B3B4

Recommended Dilutions:

WB 1:1000-1:4000

Applications

Tested Applications:

WB, ELISA

Species Specificity:

Human, Mouse, Rat

Positive Controls:

WB : mouse eye tissue, rat eye tissue, mouse retina tissue

Background Information

PDE6A(Rod cGMP-specific 3',5'-cyclic phosphodiesterase subunit alpha) is also named as GMP-PDE alpha, PDE V-B1, PDEA and belongs to the cyclic nucleotide phosphodiesterase family. PDE6A contains an open reading frame capable of coding for a polypeptide of 859 amino acids and about 100 kDa. It is a subunit of a key phototransduction enzyme which participates in processes of transmission and amplification of the visual signal. The expression of PDE6 alpha in retina is essential for normal expression of PDE6 beta and PDE6 gamma.

Storage

Storage:

Store at -20°C.

Storage Buffer:

PBS with 0.02% sodium azide and 50% glycerol pH 7.3.

Aliquoting is unnecessary for -20°C storage

*** 20ul sizes contain 0.1% BSA

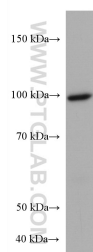
For technical support and original validation data for this product please contact:

T: 1 (888) 4PTGLAB (1-888-478-4522) (toll free in USA), or 1(312) 455-8498 (outside USA)

E: proteintech@ptglab.com
W: ptglab.com

This product is exclusively available under Proteintech Group brand and is not available to purchase from any other manufacturer.

Selected Validation Data



mouse eye tissue were subjected to SDS PAGE followed by western blot with 67832-1-Ig (PDE6A antibody) at dilution of 1:2000 incubated at room temperature for 1.5 hours.