

For Research Use Only

# LMCD1 Monoclonal antibody

Catalog Number: 67834-1-Ig 1 Publications



## Basic Information

Catalog Number: 67834-1-Ig	GenBank Accession Number: BC000646	Purification Method: Protein G purification
Size: 150ul , Concentration: 1000 ug/ml by Nanodrop and 538 ug/ml by Bradford method using BSA as the standard;	GeneID (NCBI): 29995	CloneNo.: 2A7B3
Source: Mouse	UNIPROT ID: Q9NZU5	Recommended Dilutions: WB 1:5000-1:50000 IHC 1:250-1:1000 IF/ICC 1:200-1:800
Isotype: IgG1	Full Name: LIM and cysteine-rich domains 1	
Immunogen Catalog Number: AG28331	Calculated MW: 41 kDa	
	Observed MW: ~40 kDa	

## Applications

Tested Applications: WB, IHC, IF/ICC, ELISA	Positive Controls: WB : U2OS cells, human placenta tissue
Cited Applications: WB	IHC : human colon tissue, mouse skeletal muscle tissue, rat skeletal muscle tissue, human colon cancer tissue
Species Specificity: Human, mouse, rat	IF/ICC : MCF-7 cells,
Cited Species: human, mouse	
<b>Note-IHC: suggested antigen retrieval with TE buffer pH 9.0; (*) Alternatively, antigen retrieval may be performed with citrate buffer pH 6.0</b>	

## Background Information

LIM and cysteine-rich domains-1 (LMCD1) is a member of the LIM protein family, which contains an N-terminal cysteine-rich region, two C-terminal LIM domains and a central PET (Prickle, Espinas, and Testin) domain. LMCD1 has been reported in cardiac tissues and lung acting as a transcriptional repressor for GATA6. The mutations of LMCD1 promote cell migration and tumor metastasis in hepatocellular carcinoma. (PMID: 31501411) It has calculated molecular weight around 41kDa.

## Notable Publications

Author	Pubmed ID	Journal	Application
Yunlan Tang	39426558	Exp Eye Res	WB

## Storage

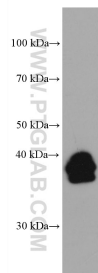
Storage:  
Store at -20°C. Stable for one year after shipment.  
Storage Buffer:  
PBS with 0.02% sodium azide and 50% glycerol pH 7.3.  
Aliquoting is unnecessary for -20°C storage

\*\*\* 20ul sizes contain 0.1% BSA

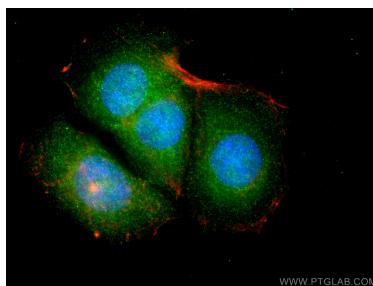
For technical support and original validation data for this product please contact:  
T: 1 (888) 4PTGLAB (1-888-478-4522) (toll free in USA), or 1(312) 455-8498 (outside USA)  
E: proteintech@ptglab.com  
W: ptglab.com

This product is exclusively available under Proteintech Group brand and is not available to purchase from any other manufacturer.

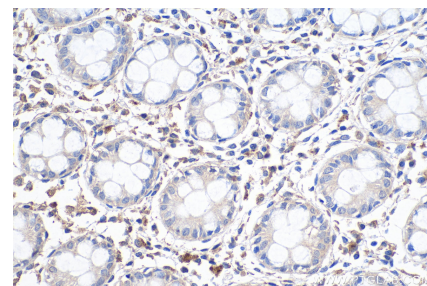
## Selected Validation Data



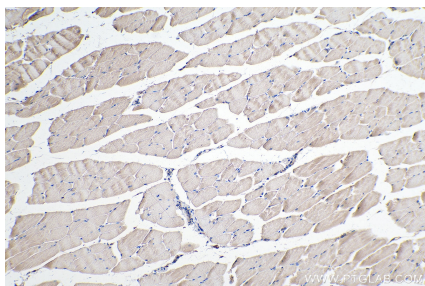
U2OS cells were subjected to SDS PAGE followed by western blot with 67834-1-Ig (LMCD1 antibody) at dilution of 1:20000 incubated at room temperature for 1.5 hours.



Immunofluorescent analysis of (4% PFA) fixed MCF-7 cells using LMCD1 antibody (67834-1-Ig, Clone: 2A7B3 ) at dilution of 1:400 and CoraLite®488-Conjugated Goat Anti-Mouse IgG(H+L), CL594-Phalloidin (red).



Immunohistochemical analysis of paraffin-embedded human colon tissue slide using 67834-1-Ig (LMCD1 antibody) at dilution of 1:500 (under 40x lens). Heat mediated antigen retrieval with Tris-EDTA buffer (pH 9.0).



Immunohistochemical analysis of paraffin-embedded mouse skeletal muscle tissue slide using 67834-1-Ig (LMCD1 antibody) at dilution of 1:500 (under 10x lens). Heat mediated antigen retrieval with Tris-EDTA buffer (pH 9.0).