

For Research Use Only

LMCD1 Monoclonal antibody, PBS Only



Catalog Number: 67834-1-PBS

Basic Information

Catalog Number: 67834-1-PBS	GenBank Accession Number: BC000646	Purification Method: Protein G purification
Size: 100ug , Concentration: 1 mg/ml by Nanodrop;	GeneID (NCBI): 29995	CloneNo.: 2A7B3
Source: Mouse	UNIPROT ID: Q9NZU5	
Isotype: IgG1	Full Name: LIM and cysteine-rich domains 1	
Immunogen Catalog Number: AG28331	Calculated MW: 41 kDa	
	Observed MW: ~40 kDa	

Applications

Tested Applications:
WB, IF, IHC, Indirect ELISA

Species Specificity:
Human, mouse, rat

Background Information

LIM and cysteine-rich domains-1 (LMCD1) is a member of the LIM protein family, which contains an N-terminal cysteine-rich region, two C-terminal LIM domains and a central PET (Prickle, Espinas, and Testin) domain. LMCD1 has been reported in cardiac tissues and lung acting as a transcriptional repressor for GATA6. The mutations of LMCD1 promote cell migration and tumor metastasis in hepatocellular carcinoma. (PMID: 31501411) It has calculated molecular weight around 41kDa.

Storage

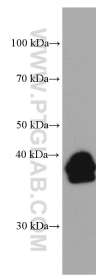
Storage:
Store at -80°C.

Storage Buffer:
PBS Only

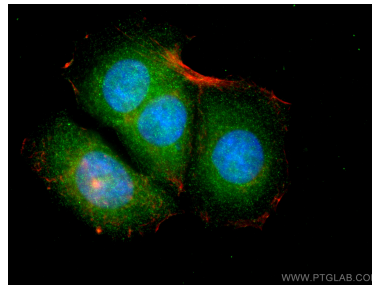
For technical support and original validation data for this product please contact:
T: 1 (888) 4PTGLAB (1-888-478-4522) (toll free in USA), or 1(312) 455-8498 (outside USA)
E: proteintech@ptglab.com
W: ptglab.com

This product is exclusively available under Proteintech Group brand and is not available to purchase from any other manufacturer.

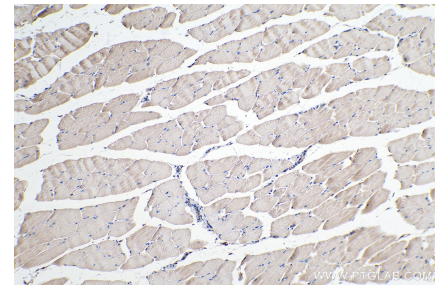
Selected Validation Data



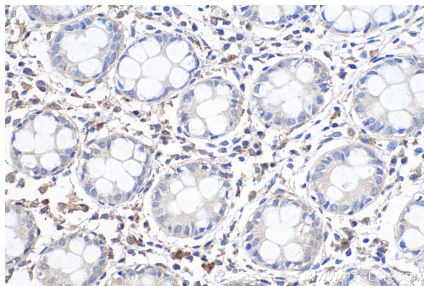
U2OS cells were subjected to SDS PAGE followed by western blot with 67834-1-Ig (LMCD1 antibody) at dilution of 1:20000 incubated at room temperature for 1.5 hours. This data was developed using the same antibody clone with 67834-1-PBS in a different storage buffer formulation.



Immunofluorescent analysis of (4% PFA) fixed MCF-7 cells using LMCD1 antibody (67834-1-Ig, Clone: 2A7B3) at dilution of 1:400 and CoraLite®488-Conjugated AffiniPure Goat Anti-Mouse IgG(H+L), CL594-Phalloidin (red). This data was developed using the same antibody clone with 67834-1-PBS in a different storage buffer formulation.



Immunohistochemical analysis of paraffin-embedded mouse skeletal muscle tissue slide using 67834-1-Ig (LMCD1 antibody) at dilution of 1:500 (under 10x lens). Heat mediated antigen retrieval with Tris-EDTA buffer (pH 9.0). This data was developed using the same antibody clone with 67834-1-PBS in a different storage buffer formulation.



Immunohistochemical analysis of paraffin-embedded human colon tissue slide using 67834-1-Ig (LMCD1 antibody) at dilution of 1:500 (under 40x lens). Heat mediated antigen retrieval with Tris-EDTA buffer (pH 9.0). This data was developed using the same antibody clone with 67834-1-PBS in a different storage buffer formulation.