

For Research Use Only

RAB1B Monoclonal antibody

Catalog Number: 67837-1-Ig

Featured Product



Basic Information

Catalog Number:

67837-1-Ig

Size:

150ul, Concentration: 1000 ug/ml by Nanodrop;

Source:

Mouse

Isotype:

IgG1

Immunogen Catalog Number:

AG12069

GenBank Accession Number:

BC071169

GeneID (NCBI):

81876

UNIPROT ID:

Q9H0U4

Full Name:

RAB1B, member RAS oncogene family

Calculated MW:

201 aa, 22 kDa

Observed MW:

22 kDa

Purification Method:

Protein A purification

CloneNo.:

3C2G6

Recommended Dilutions:

WB 1:5000-1:50000

IHC 1:250-1:1000

IF/ICC 1:400-1:1600

Applications

Tested Applications:

WB, IHC, IF/ICC, ELISA

Species Specificity:

human, mouse, rat

Note-IHC: suggested antigen retrieval with TE buffer pH 9.0; (*) Alternatively, antigen retrieval may be performed with citrate buffer pH 6.0

Positive Controls:

WB : A549 cells, NIH/3T3 cells, HeLa cells, U2OS cells, LNCaP cells, HEK-293 cells, Jurkat cells, K-562 cells, HSC-T6 cells

IHC : human lung cancer tissue, human liver cancer tissue, human ovary tumor tissue, human pancreas cancer tissue, human stomach cancer tissue, rat brain tissue, rat heart tissue

IF/ICC : NIH/3T3 cells, MCF-7 cells

Storage

Storage:

Store at -20°C. Stable for one year after shipment.

Storage Buffer:

PBS with 0.02% sodium azide and 50% glycerol pH 7.3.

Aliquoting is unnecessary for -20°C storage

*** 20ul sizes contain 0.1% BSA

For technical support and original validation data for this product please contact:

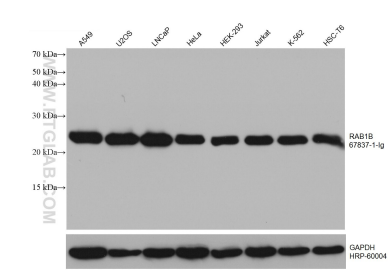
T: 1 (888) 4PTGLAB (1-888-478-4522) (toll free in USA), or 1(312) 455-8498 (outside USA)

E: proteintech@ptglab.com

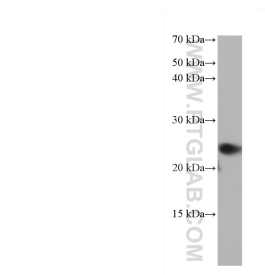
W: ptglab.com

This product is exclusively available under Proteintech Group brand and is not available to purchase from any other manufacturer.

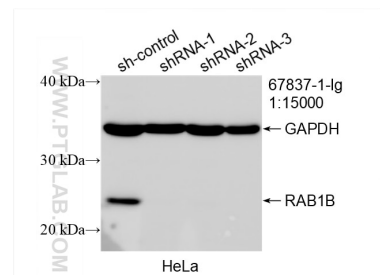
Selected Validation Data



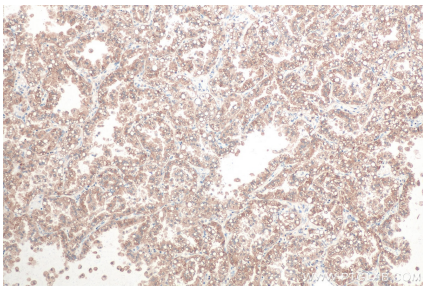
Various lysates were subjected to SDS PAGE followed by western blot with 67837-1-Ig (RAB1B antibody) at dilution of 1:10000 incubated at room temperature for 1.5 hours.



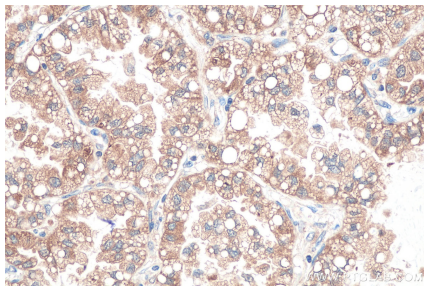
NIH/3T3 cells were subjected to SDS PAGE followed by western blot with 67837-1-Ig (RAB1B antibody) at dilution of 1:10000 incubated at room temperature for 1.5 hours.



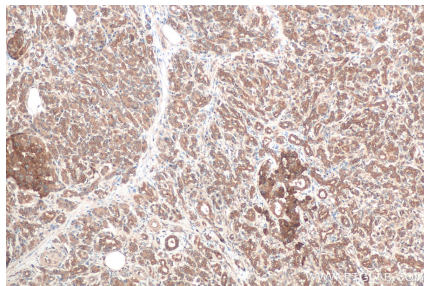
WB result of RAB1B antibody (67837-1-Ig; 1:15000; incubated at room temperature for 1.5 hours) with sh-Control and sh-RAB1B transfected HeLa cells.



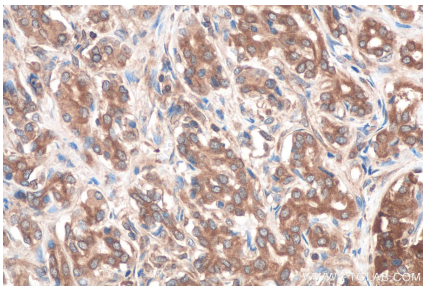
Immunohistochemical analysis of paraffin-embedded human lung cancer tissue slide using 67837-1-Ig (RAB1B antibody) at dilution of 1:500 (under 10x lens). Heat mediated antigen retrieval with Tris-EDTA buffer (pH 9.0).



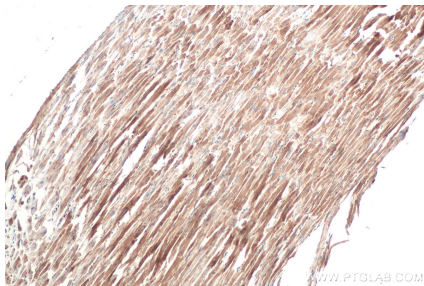
Immunohistochemical analysis of paraffin-embedded human lung cancer tissue slide using 67837-1-Ig (RAB1B antibody) at dilution of 1:500 (under 40x lens). Heat mediated antigen retrieval with Tris-EDTA buffer (pH 9.0).



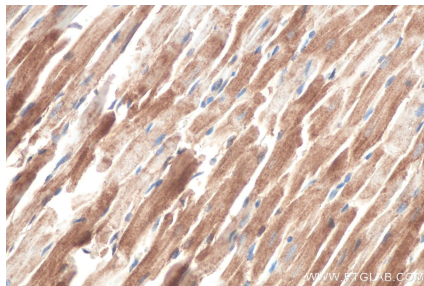
Immunohistochemical analysis of paraffin-embedded human pancreas cancer tissue slide using 67837-1-Ig (RAB1B antibody) at dilution of 1:500 (under 10x lens). Heat mediated antigen retrieval with Tris-EDTA buffer (pH 9.0).



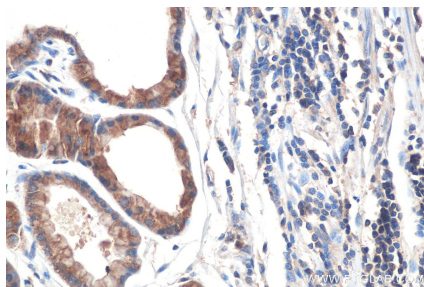
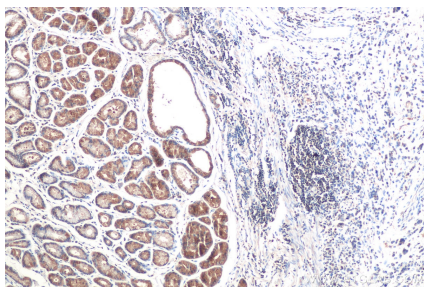
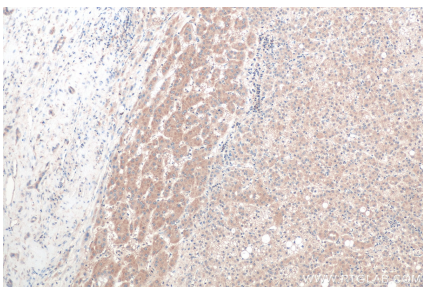
Immunohistochemical analysis of paraffin-embedded human pancreas cancer tissue slide using 67837-1-Ig (RAB1B antibody) at dilution of 1:500 (under 40x lens). Heat mediated antigen retrieval with Tris-EDTA buffer (pH 9.0).



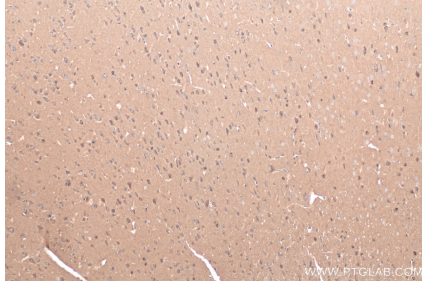
Immunohistochemical analysis of paraffin-embedded rat heart tissue slide using 67837-1-Ig (RAB1B antibody) at dilution of 1:500 (under 10x lens). Heat mediated antigen retrieval with Tris-EDTA buffer (pH 9.0).



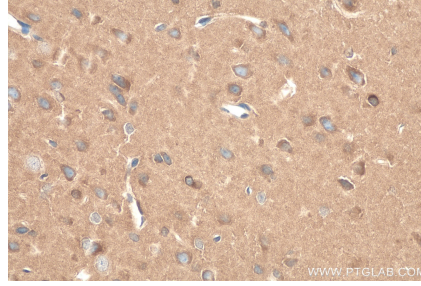
Immunohistochemical analysis of paraffin-embedded rat heart tissue slide using 67837-1-Ig (RAB1B antibody) at dilution of 1:500 (under 40x lens). Heat mediated antigen retrieval with Tris-EDTA buffer (pH 9.0).



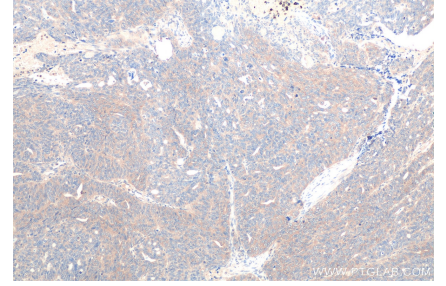
Immunohistochemical analysis of paraffin-embedded human liver cancer tissue slide using 67837-1-Ig (RAB1B antibody) at dilution of 1:500 (under 10x lens). Heat mediated antigen retrieval with Tris-EDTA buffer (pH 9.0).



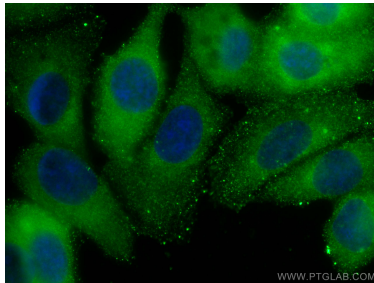
Immunohistochemical analysis of paraffin-embedded human stomach cancer tissue slide using 67837-1-Ig (RAB1B antibody) at dilution of 1:500 (under 10x lens). Heat mediated antigen retrieval with Tris-EDTA buffer (pH 9.0).



Immunohistochemical analysis of paraffin-embedded human stomach cancer tissue slide using 67837-1-Ig (RAB1B antibody) at dilution of 1:500 (under 40x lens). Heat mediated antigen retrieval with Tris-EDTA buffer (pH 9.0).

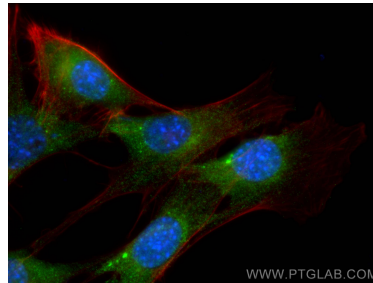


Immunohistochemical analysis of paraffin-embedded rat brain tissue slide using 67837-1-Ig (RAB1B antibody) at dilution of 1:500 (under 10x lens). Heat mediated antigen retrieval with Tris-EDTA buffer (pH 9.0).



Immunofluorescent analysis of (-20°C Methanol) fixed MCF-7 cells using RAB1B antibody (67837-1-Ig, Clone: 3C2G6) at dilution of 1:400 and CoraLite®488-Conjugated AffiniPure Goat Anti-Mouse IgG(H+L).

Immunohistochemical analysis of paraffin-embedded rat brain tissue slide using 67837-1-Ig (RAB1B antibody) at dilution of 1:500 (under 40x lens). Heat mediated antigen retrieval with Tris-EDTA buffer (pH 9.0).



Immunofluorescent analysis of (4% PFA) fixed NIH/3T3 cells using RAB1B antibody (67837-1-Ig, Clone: 3C2G6) at dilution of 1:800 and CoraLite®488-Conjugated AffiniPure Goat Anti-Mouse IgG(H+L), CL594-Phalloidin (red).