

For Research Use Only

CIP2A Monoclonal antibody

Catalog Number: 67843-1-Ig **1 Publications**



Basic Information

Catalog Number: 67843-1-Ig	GenBank Accession Number: BC130564	Purification Method: Protein G purification
Size: 150ul , Concentration: 1000 ug/ml by Nanodrop;	GeneID (NCBI): 57650	CloneNo.: 2A3F3
Source: Mouse	UNIPROT ID: Q8TCG1	Recommended Dilutions: WB 1:5000-1:50000 IF/ICC 1:200-1:800
Isotype: IgG1	Full Name: KIAA1524	
Immunogen Catalog Number: AG19598	Calculated MW: 905 aa, 102 kDa	
	Observed MW: 102 kDa	

Applications

Tested Applications: WB, IF/ICC, ELISA	Positive Controls: WB : LNCaP cells, HSC-T6 cells, PC-12 cells, HeLa cells, HEK-293 cells, Jurkat cells, K-562 cells IF/ICC : HeLa cells,
Cited Applications: WB	
Species Specificity: Human, rat	
Cited Species: rat	

Background Information

Cancerous inhibitor of protein phosphatase 2A (CIP2A) was originally identified as a cellular protein phosphatase 2A (PP2A) inhibitor, and has been shown to control oncogenic cellular signals by suppressing the tumor suppressor PP2A. CIP2A overexpression has been found in several human malignancies including breast cancer, hepatocellular carcinoma, gastric cancer, head and neck cancer, colon cancer, prostate cancer and non-small cell lung cancer. CIP2A is a 83-102 kDa cytoplasmic protein. (PMID: 26824320, PMID: 25458953, PMID: 29720672)

Notable Publications

Author	Pubmed ID	Journal	Application
Xu Zhou	40017141	Mol. Med Rep	WB

Storage

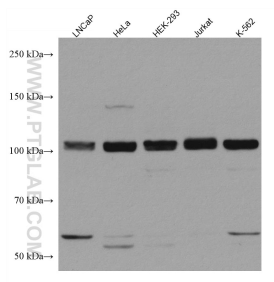
Storage:
Store at -20°C.
Storage Buffer:
PBS with 0.02% sodium azide and 50% glycerol, pH7.3
Aliquoting is unnecessary for -20°C storage

*** 20ul sizes contain 0.1% BSA

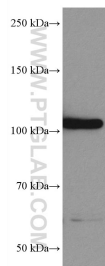
For technical support and original validation data for this product please contact:
T: 1 (888) 4PTGLAB (1-888-478-4522) (toll free in USA), or 1(312) 455-8498 (outside USA)
E: proteintech@ptglab.com
W: ptglab.com

This product is exclusively available under Proteintech Group brand and is not available to purchase from any other manufacturer.

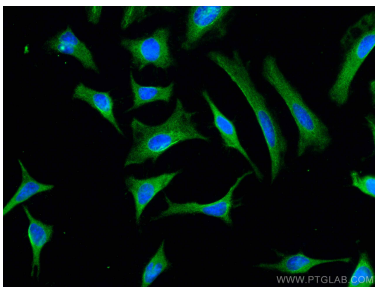
Selected Validation Data



Various lysates were subjected to SDS PAGE followed by western blot with 67843-1-Ig (KIAA1524 antibody) at dilution of 1:10000 incubated at room temperature for 1.5 hours.



HSC-T6 cells were subjected to SDS PAGE followed by western blot with 67843-1-Ig (KIAA1524 antibody) at dilution of 1:10000 incubated at room temperature for 1.5 hours.



Immunofluorescent analysis of (-20°C Methanol) fixed HeLa cells using KIAA1524 antibody (67843-1-Ig, Clone: 2A3F3) at dilution of 1:400 and CoraLite®488-Conjugated Goat Anti-Mouse IgG(H+L).