

For Research Use Only

# EFTUD2 Monoclonal antibody

Catalog Number: 67855-1-Ig

Featured Product

1 Publications



## Basic Information

<b>Catalog Number:</b> 67855-1-Ig	<b>GenBank Accession Number:</b> BC002360	<b>Purification Method:</b> Protein G purification
<b>Size:</b> 150ul , Concentration: 1000 µg/ml by Nanodrop;	<b>GeneID (NCBI):</b> 9343	<b>CloneNo.:</b> 2F4G2
<b>Source:</b> Mouse	<b>Full Name:</b> elongation factor Tu GTP binding domain containing 2	<b>Recommended Dilutions:</b> WB 1:5000-1:50000 IHC 1:500-1:2000 IF 1:400-1:1600
<b>Isotype:</b> IgG1	<b>Calculated MW:</b> 116 kDa	
<b>Immunogen Catalog Number:</b> AG24345	<b>Observed MW:</b> 109-120 kDa	

## Applications

**Tested Applications:**  
IF, IHC, WB, ELISA

**Cited Applications:**  
WB

**Species Specificity:**  
Human, mouse, rat

**Cited Species:**  
human

**Note-IHC: suggested antigen retrieval with TE buffer pH 9.0; (\*) Alternatively, antigen retrieval may be performed with citrate buffer pH 6.0**

**Positive Controls:**

**WB:** LNCaP cells, HeLa cells, HEK-293 cells, Jurkat cells, K-562 cells, HSC-T6 cells, PC-12 cells, NIH/3T3 cells, RAW 264.7 cells

**IHC:** human liver cancer tissue, human colon cancer tissue

**IF:** HeLa cells,

## Background Information

### Notable Publications

Author	Pubmed ID	Journal	Application
Xiaojian Zhu	38163859	J Exp Clin Cancer Res	WB

## Storage

**Storage:**

Store at -20°C. Stable for one year after shipment.

**Storage Buffer:**

PBS with 0.02% sodium azide and 50% glycerol pH 7.3.

Aliquoting is unnecessary for -20°C storage

\*\*\* 20ul sizes contain 0.1% BSA

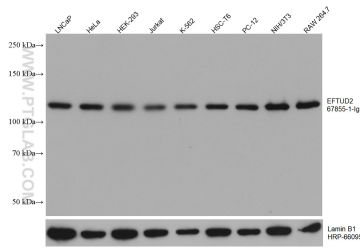
For technical support and original validation data for this product please contact:

T: 1 (888) 4PTGLAB (1-888-478-4522) (toll free in USA), or 1(312) 455-8498 (outside USA)

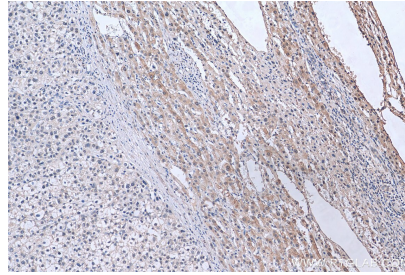
E: proteintech@ptglab.com  
W: ptglab.com

This product is exclusively available under Proteintech Group brand and is not available to purchase from any other manufacturer.

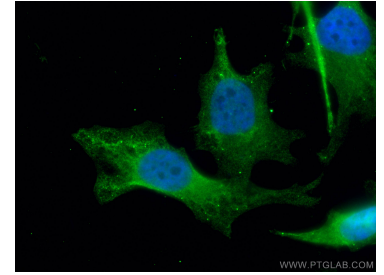
## Selected Validation Data



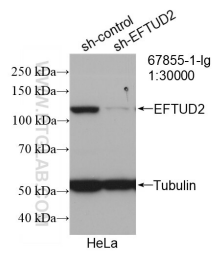
Various lysates were subjected to SDS PAGE followed by western blot with 67855-1-Ig (EFTUD2 antibody) at dilution of 1:10000 incubated at room temperature for 1.5 hours. The membrane was stripped and reblotted with HRP-conjugated Lamin B1 Monoclonal antibody (HRP-66095) as loading control.



Immunohistochemical analysis of paraffin-embedded human liver cancer tissue slide using 67855-1-Ig (EFTUD2 antibody) at dilution of 1:1000 (under 10x lens). Heat mediated antigen retrieval with Tris-EDTA buffer (pH 9.0).



Immunofluorescent analysis of (4% PFA) fixed HeLa cells using EFTUD2 antibody (67855-1-Ig, Clone: 2F4G2 ) at dilution of 1:1800 and CoraLite@488-Conjugated AffiniPure Goat Anti-Mouse IgG(H+L).



WB result of EFTUD2 antibody (67855-1-Ig; 1:30000; incubated at room temperature for 1.5 hours) with sh-Control and sh-EFTUD2 transfected HeLa cells.