

For Research Use Only

EFTUD2 Monoclonal antibody, PBS Only



Catalog Number: 67855-1-PBS

Featured Product

Basic Information

Catalog Number:

67855-1-PBS

Size:

100ug, Concentration: 1 mg/ml by Nanodrop;

Source:

Mouse

Isotype:

IgG1

Immunogen Catalog Number:

AG24345

GenBank Accession Number:

BC002360

GeneID (NCBI):

9343

UNIPROT ID:

Q15029

Full Name:

elongation factor Tu GTP binding domain containing 2

Calculated MW:

116 kDa

Observed MW:

109-120 kDa

Purification Method:

Protein G purification

CloneNo.:

2F4G2

Applications

Tested Applications:

WB, IF, IHC, Indirect ELISA

Species Specificity:

Human, mouse, rat

Storage

Storage:

Store at -80°C.

Storage Buffer:

PBS Only

For technical support and original validation data for this product please contact:

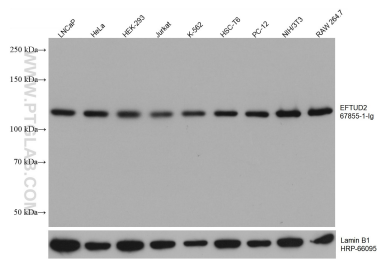
T: 1 (888) 4PTGLAB (1-888-478-4522) (toll free in USA), or 1(312) 455-8498 (outside USA)

E: proteintech@ptglab.com

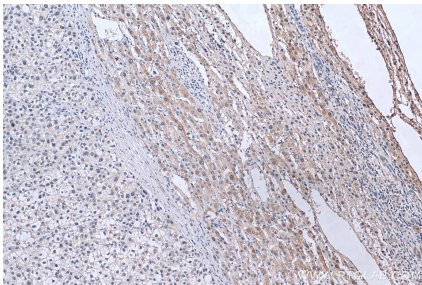
W: ptglab.com

This product is exclusively available under Proteintech Group brand and is not available to purchase from any other manufacturer.

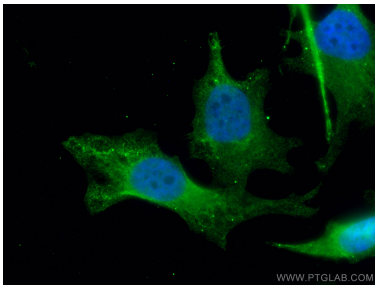
Selected Validation Data



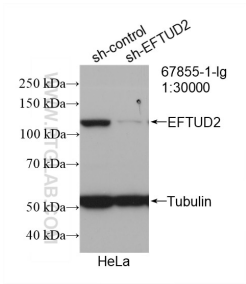
Various lysates were subjected to SDS PAGE followed by western blot with 67855-1-Ig (EFTUD2 antibody) at dilution of 1:10000 incubated at room temperature for 1.5 hours. The membrane was stripped and reblotted with HRP-conjugated Lamin B1 Monoclonal antibody (HRP-66095) as loading control. This data was developed using the same antibody clone with 67855-1-PBS in a different storage buffer formulation.



Immunohistochemical analysis of paraffin-embedded human liver cancer tissue slide using 67855-1-Ig (EFTUD2 antibody) at dilution of 1:1000 (under 10x lens). Heat mediated antigen retrieval with Tris-EDTA buffer (pH 9.0). This data was developed using the same antibody clone with 67855-1-PBS in a different storage buffer formulation.



Immunofluorescent analysis of (4% PFA) fixed HeLa cells using EFTUD2 antibody (67855-1-Ig, Clone: 2F4G2) at dilution of 1:800 and CoraLite®488-Conjugated AffiniPure Goat Anti-Mouse IgG(H+L). This data was developed using the same antibody clone with 67855-1-PBS in a different storage buffer formulation.



WB result of EFTUD2 antibody (67855-1-Ig; 1:30000; incubated at room temperature for 1.5 hours) with sh-Control and sh-EFTUD2 transfected HeLa cells. This data was developed using the same antibody clone with 67855-1-PBS in a different storage buffer formulation.