

For Research Use Only

GIT2 Monoclonal antibody

Catalog Number: 67858-1-Ig



Basic Information

Catalog Number: 67858-1-Ig	GenBank Accession Number: BC001379	Purification Method: Protein G purification
Size: 150ul , Concentration: 1000 ug/ml by Nanodrop;	GeneID (NCBI): 9815	CloneNo.: 2D9C5
Source: Mouse	UNIPROT ID: Q14161	Recommended Dilutions: WB 1:5000-1:50000 IHC 1:500-1:2000
Isotype: IgG1	Full Name: G protein-coupled receptor kinase interacting ArfGAP 2	
Immunogen Catalog Number: AG0321	Calculated MW: 95 kDa	
	Observed MW: 70-85 kDa	

Applications

Tested Applications: WB, IHC, ELISA	Positive Controls:
Species Specificity: Human, rat	WB : A549 cells, K-562 cells, HSC-T6 cells, HEK-293 cells, HeLa cells
Note-IHC: suggested antigen retrieval with TE buffer pH 9.0; (*) Alternatively, antigen retrieval may be performed with citrate buffer pH 6.0	IHC : human prostate cancer tissue,

Storage

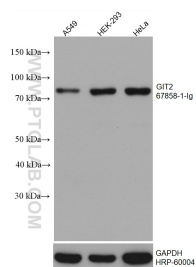
Storage:
Store at -20°C. Stable for one year after shipment.
Storage Buffer:
PBS with 0.02% sodium azide and 50% glycerol pH 7.3.
Aliquoting is unnecessary for -20°C storage

*** 20ul sizes contain 0.1% BSA

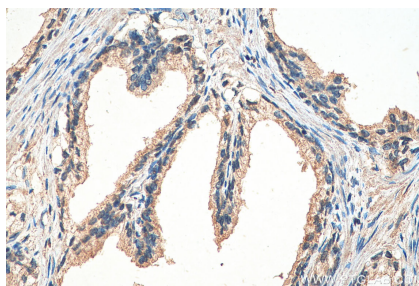
For technical support and original validation data for this product please contact:
T: 1 (888) 4PTGLAB (1-888-478-4522) (toll free in USA), or 1(312) 455-8498 (outside USA)
E: proteintech@ptglab.com
W: ptglab.com

This product is exclusively available under Proteintech Group brand and is not available to purchase from any other manufacturer.

Selected Validation Data



Various lysates were subjected to SDS PAGE followed by western blot with 67858-1-Ig (GIT2 antibody) at dilution of 1:10000 incubated at room temperature for 1.5 hours. The membrane was stripped and reblotted with HRP-conjugated GAPDH Monoclonal antibody (HRP-60004) as loading control.



Immunohistochemical analysis of paraffin-embedded human prostate cancer tissue slide using 67858-1-Ig (GIT2 antibody) at dilution of 1:1000 (under 40x lens). Heat mediated antigen retrieval with Tris-EDTA buffer (pH 9.0).